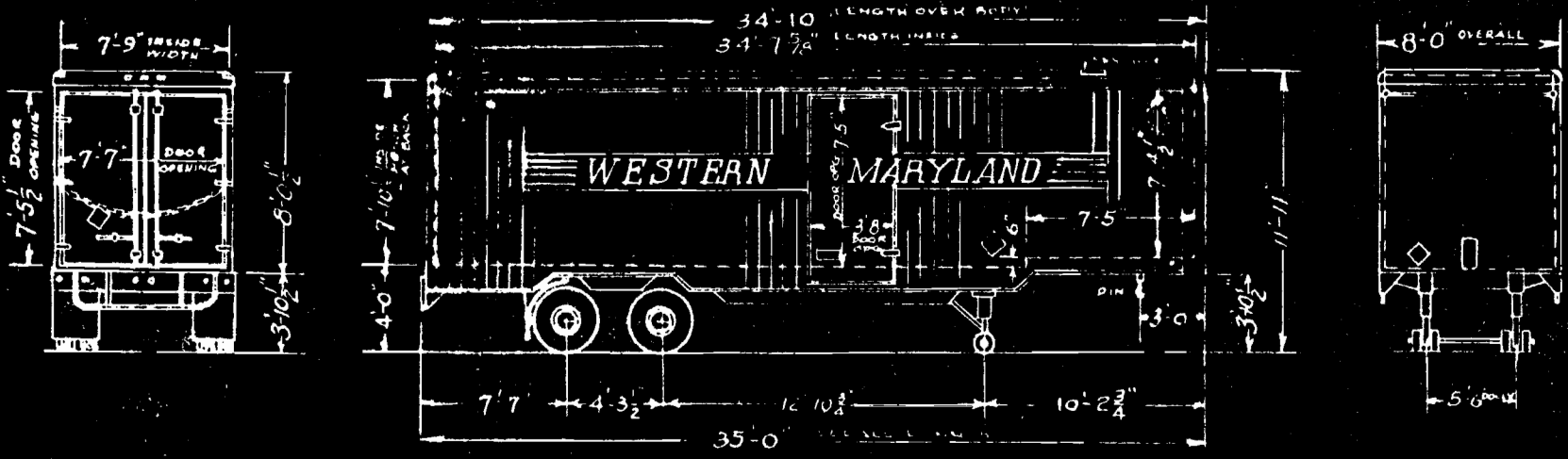


PURCHASE AN 1950 TRAILER FOR THE U.S. ARMY
 TRAILER NO. SERIAL NO.
 50 AV 312531
 51 AV 312582
 52 AV 312618

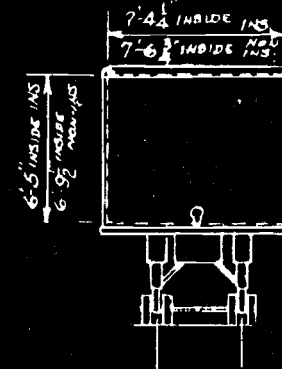
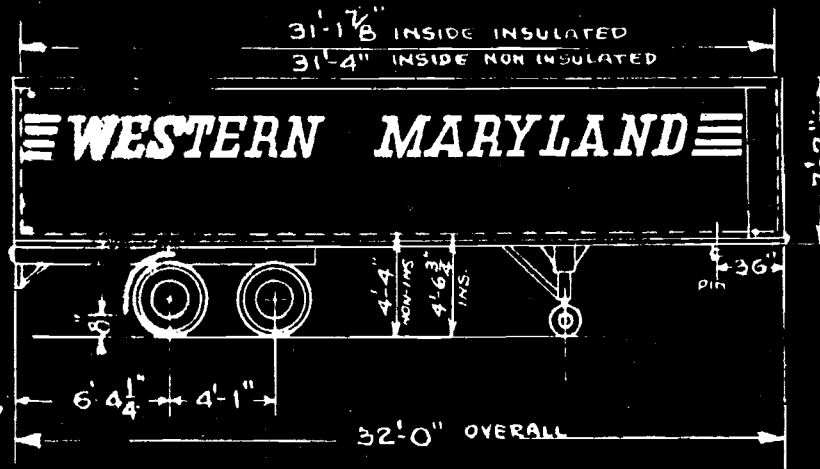
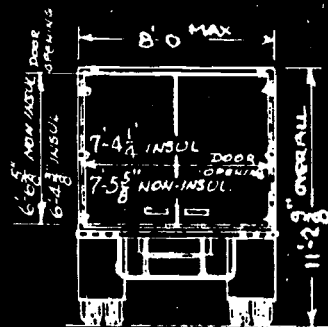
Trailer Nos. to 52
 Van



Model	Fruehauf FDVVR-5535-DF	Tie Down Anchors	W.M. Standard
Light Weight	Est. Tandem 8660 lbs.	Skylights	1-18" wide, full width
	Est. King Pin 2940 lbs.	Cargo Stabilizing Device	None
	Total 11600 lbs.		
Capacity	2154 cu.ft.		
Underframe	Steel	Electrical	6 volts
Body	H1-Tensile Steel	Receptacles	6 Ft. long, 7 Ft. 7" apart, Ford Mfg. Co.
Floor	1-3/8" Composite	Tail Lights	I.C.C.
Lining	Sides - Steel Plate 36" high	Directional Lights	I.C.C.
		Stop Lights	I.C.C.
Doors - Rear - Clear Opening	90-1/2" x 89" high	Tandem	Lubrication Free - Rubber Fide
Protection Bars	3-c 1/2" square tubing, .168 wall, 3" long	Axles	I Beam with Timken Roller Bearing
	Spacing from floor 3", 10", 11", 35 1/2", 50"	Tires	9.00/20 10 Ply
Chains - 2-5/16" dia., 1" link, proof coil, 48" long with Durbin MI Midset Load Binder		Wheels	Lightweight steel, hub integral
Doors - Curbside - Clear Opening	44" x 89" high	Mud Flaps	Rubber
Chains	2-5/16" dia., 1" link, proof coil, 24" long	Brakes	10 1/2" x 1" Air
		Landing Gear	2 Speed Vertical

BUILT-JUNE-1955 TRAILMOBILE, INC
SERIAL NOS 1-07197 TO 1-07206

Trailer Nos. 350-357-
Van
358-359
Insulated Van



358,359 - Elston Model X-1002 Cargo Heater
Nos 350-357 Equipped with brackets for Preco
Model GC-2 Automatic Cargo Heaters

Model	Trailmobile G-2		Tie Down Anchors	W.M. Standard
Light Weight	Nos. 350-357	Nos. 358,359	Sky Lights	None
Tandem	8000 lbs.	8800 lbs.		
King Pin	3200 lbs.	4000 lbs.		
Total	11200 lbs.	12800 lbs.	Electrical	6 Volts
Capacity	1807 cu.ft.	1467 cu.ft.	Receptacles	6 & 7 Point Cole-Hersee
Underframe			Tail Lights	ICC
Body	Aluminum Panels, Steel Posts, Trussed Side Roof Sheet - Aluminum with Steel Bows		Directional Lights	ICC
Floor	Nos. 350-357 1-3/8", Nos. 358,359 2" T&G Oak		Stop Light	ICC
Lining	1/4" Marine Plywood sides, doors, Nose		Tandem	
Insulation - Nos. 358, 359	5" Ultralite fiber glass		Axles	20000 lbs. Tubular with Timken Bearings
in Sides, Front, Doors, 4" in roof, 2" in floor under pan			Tires	9:00 x 20, 10 ply
			Wheels	Cast Steel, Spoke Type
			Mud Flaps - Rubber	Contour Type
Doors - Aluminum	Nos. 350-357	Nos. 358,359	Brakes	Air
Clear Opening	7'-5" x 8'-6" high.	7'-4" x 8'-4" high	Landing Gear	2 Speed Vertical

new 3-8-60
for WJ Thomas No. 350-357 sold to 604