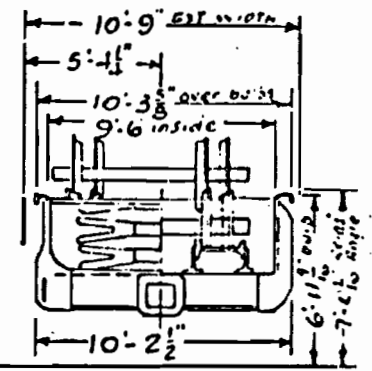
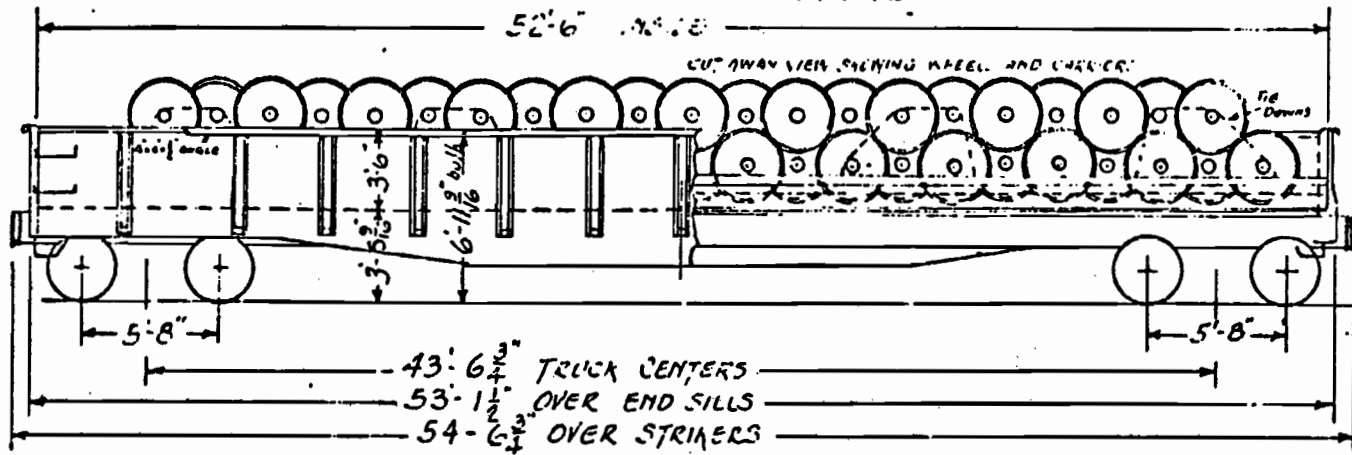


1 ST-ROW - 23 PAIRS
 2 NO.-ROW - 21 PAIRS
 TOTAL 44 PAIRS



NO.	DESCRIPTION	CATALOG NO.
25	55029	54401
26	55022	54127
27	55004	54107
28	55024	54377

GENERAL		DRAFT (continued)	
1. Capacity	151,000 lbs.	16. Striker & Coupler Carrier with Coup.Ht.Adjust.	SRENCO.
2. Load Limit	152,000 lbs.	17. Coupler Uncoupling Device	SRENCO.
3. Light Weight	68,000 lbs.	BRAKE	7 ¹ / ₂ " Brake Cylinder Conversion Kit
4. Maximum Load on Rails	220,000 lbs.	18. Brake Schedule	WABCO "AB" 10" x 12"
UNDERFRAME		19. Brake Power	23,750 lbs. 10.76% GFL
5. Center Sills	AAR "Z" 41.2 lbs.	20. Automatic Slack Adjuster	Elcon-National
6. Side Sills	Fishbelly	21. Hand Brake	AAR Ajax, Universal, Equipco, Klasing
7. Floor Paint	Non-Skid Mortell No. 3009	TRUCKS	(Journal Stops, Front & Rear Seals)
8. Ends	Dreadnaught Drop Ends	22. Frames	A-3 Ride Control ASF
9. Wheel Supports	I-beams 2 - 24" 79.9 lbs.	23. Snubbing Device	Bolster Friction Block
TIE-DOWNS PER CAR		24. Brake Levers and Connectors	Schaefer
10. Brandon - Gravity Lock Turnbuckles	8 per car	25. Brake Beams	AAR No. 18, Composition Shoes H-4-A
11. 7/16" dia. chain	8' 10" long	26. Brake Beam Hangers	Flannery
12. 16 gauge axle shields	8 Pulling Loops	27. Brake Beam Supports & Safety Device	4 Point Creco
DRAFT		28. Side Bearings - Roller Type Single	Stucki
13. Draft Gear	AAR RF-361 Miner; Yoke BY-40	29. Axles	AAR 6" x 11" Wheels 1-wear Wrot Steel 53"