
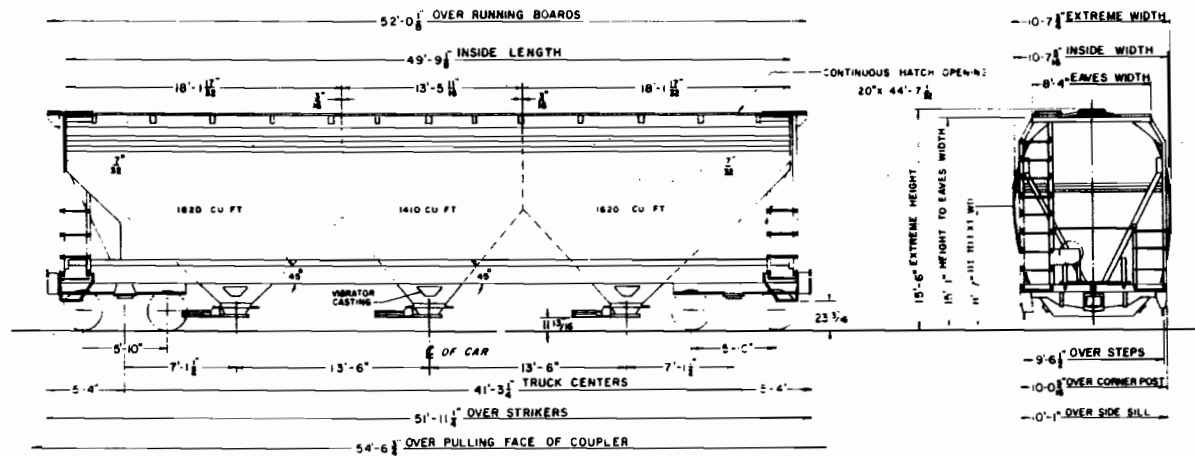


REVISION DATES						MECHANICAL DEPARTMENT		RR	SERIES	CLASS
1-28-74								WM	602400-602449	HC-43
5-7-80										
3-31-83										
						HUNTINGTON, W. VA.	DATE: 12-2-74			NONE AS9.



GENERAL DATA	CAR BODY DATA	TRUCK DATA	MISCELLANEOUS
BUILT BY - ACF	BRAKES - CONVENTIONAL - ABD	TYPE - BARBER S-2-C	<i>NEW IN CHESSIE PT.</i>
YEAR BUILT - 1974	BRAKE ARRANGEMENT -	GENERAL DWG -	
CUBIC CAPY. - 4650	CENTER SILL - 36.2 LB. Z-SECTION (ENDS ONLY)	JOURNAL - 6 1/2" X 12" R.B.	
AVERAGE LD. LMT. - 199100	COUPLER - B-E 60 C-HT	SPRING TRAVEL - 3 1/16"	
AVERAGE LT. WT. - 63900	DRAFT GEAR - AAR M-901-E	WHEELS - 36" DIA. I. W.W.S.	
BUILDERS REFERENCE - LOT 11-01311	DOOR - GRAVITY - 13" X 42"	WEIGHT ONE TRUCK - 10150 LBS.	
RAILROAD SPEC. -	DOOR ARRANGEMENT - 121-11-451, 452	BRAKE SHOES - 2" COMPOSITION	
GENERAL ARRANGEMENT DWG. - ACF 6-F-4098	END - 3/16" PLATE	SUPPLEMENTAL SNUBBING - DOUBLE	
CLEARANCE - PLATE "C"	FLOOR - 3/16", 1/4" PLATE	BARBER SIDE COILS & ONE MDA	
CURVATURE - UNCOUPLED - 150 FT.	HAND BRAKE - ELLCON-NAT.D-1600-Z W/66 B.C.	CONTROL MASTER PER	
COUPLED TO BASE CAR - 195 FT.	LINING - NONE	SPRING NEST.	
CENTER OF GRAVITY - LIGHT	UNDERFRAME - RIGID		
LOADED - 98 IN.			