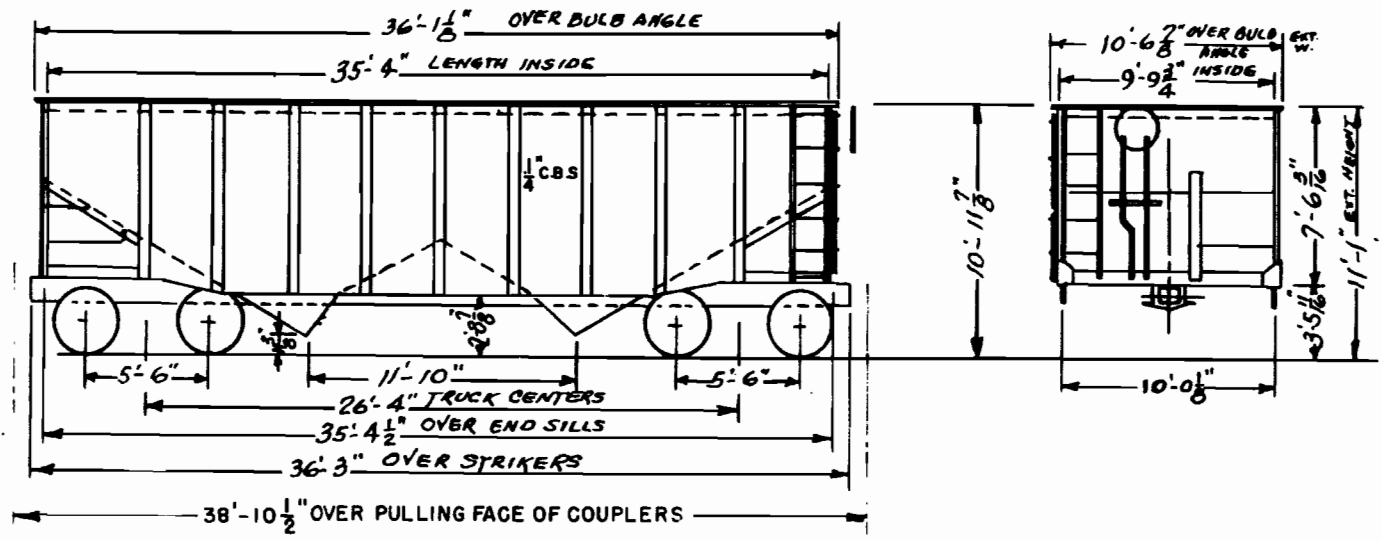


REVISION DATES					MECHANICAL DEPARTMENT		RR	SERIES	CLASS
5-7-80							WM	17001-18900	H-51
					HUNTINGTON W VA		DATE 8-18-75		

17001-17400	H-21
17401-17800	H-22
17801-18100	H-24
18101-18400	H-27
18401-18900	H-28



GENERAL DATA	CAR BODY DATA	TRUCK DATA	MISCELLANEOUS
BUILT BY - NOTE-1; REBUILT CO. SHOPS *	BRAKES - AB CONVENTIONAL - NOTE-2	TYPE - A-3 RIDE CONTROL	NOTE-1
YEAR BUILT - 1947, 48, 49 - REBUILT 1968 *	BRAKE ARRANGEMENT - A-1139	GENERAL DWG -	ORIGINALLY WM SERIES 113001-134000
CUBIC CAPY. - 2318	GENTER SILL - 36.21 LB. 2" C.S. END SECT.	JOURNAL - 5-1/2" X 10" FRICTION	BUILT BY BETHLEHEM STEEL CORP. 1947, 1948, 1949.
AVERAGE LD. LMT - 133700	COUPLER - TYPE "E" 6-1/4" X 8"	SPRING TRAVEL - 2-1/2"	
AVERAGE LT. WT. - 43300	DRAFT GEAR - M-901	WHEELS - 33" DIA. I.W.W.S.	
BUILDERS REFERENCE -	DOOR - C.S. FRAME - 5/16" C.B.S. PLT.	WEIGHT ONE TRUCK -	NOTE-2
RAILROAD SPEC. -	DOOR ARRANGEMENT -	BRAKE SHOES - NOTE-2	17001-17400 CAST IRON BRAKE SHOES, 10" X 12" CYL.
GENERAL ARRANGEMENT DWG. - A-1133	END - 1/4" C.B.S.		17401-18900 2" COMP. SHOES, 7-1/2" BUSHING KIT
CLEARANCE - PLATE "B"	FLOOR - 1/4" C.B.S.		
CURVATURE - UNCOUPLED -	HAND BRAKE -		
COUPLED TO BASE CAR -	LINING -		
CENTER OF GRAVITY - LIGHT -	UNDERFRAME - RIGID		
			* 18401 - 18900 ONLY ARE A.A.R.