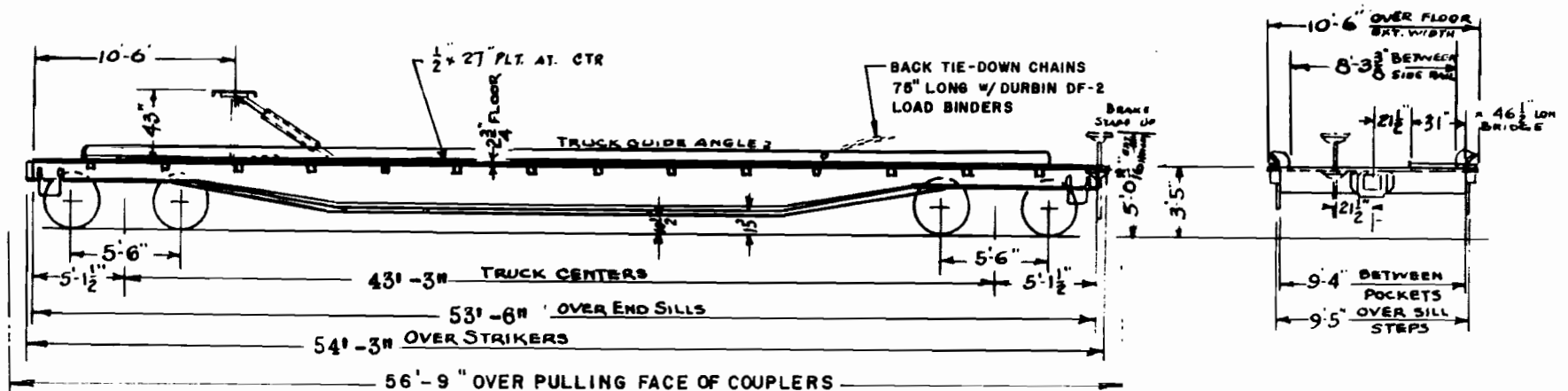


REVISION DATES					MECHANICAL DEPARTMENT		RR	SERIES	CLASS
					Chessie System		WM	7001-7030	F-32B
								F-15	(9)
					HUNTINGTON, W. VA.		DATE 10-3-75		

7001, 02, 06, 12, 13, 20, 22, 24, 30



GENERAL DATA	CAR BODY DATA	TRUCK DATA	MISCELLANEOUS
BUILT BY - BETH STEEL	BRAKES - "AB" CONVENTIONAL 10 X 12	TYPE - A-3 RIDE CONTROL	NOTE-1
YEAR BUILT - 1959	BRAKE ARRANGEMENT - A-1071	GENERAL DWG - C-1289	CONVERTED TO PIGGYBACK CARS 1960.
CUBIC CAPY. -	CENTER SILL - 30" 116 LB I-BEAM	JOURNAL - 5-1/2 X 10 R.B.	7001 7006 7020 7024
AVERAGE LD. LMT - 118600	COUPLER - TYPE "E" 6-1/4 X 8	SPRING TRAVEL - 2-1/2	7002 7013 7022 7030
AVERAGE LT. WT. - 58400	DRAFT GEAR - M-901	WHEELS - 33" DIA. M.W.	
BUILDERS REFERENCE - 3400-286	DOOR -	WEIGHT ONE TRUCK -	NOTE-2
RAILROAD SPEC. -	DOOR ARRANGEMENT -	BRAKE SHOES - CAST IRON (NOTE-2)	CARS WITH 2" COMPOSITION BRAKE SHOES
GENERAL ARRANGEMENT DWG. - A-1070	END -		7001, 7002, 7006, 7020
CLEARANCE - PLATE "B"	FLOOR - 2-3/4" SQ. EDGE OAK		
CURVATURE - UNCOUPLED -	HAND BRAKE - UNIVERSAL DROP SHAFT		
COUPLED TO BASE CAR -	LINING -		
CENTER OF GRAVITY - LIGHT -	UNDERFRAME - RIGID		
LOADED -			