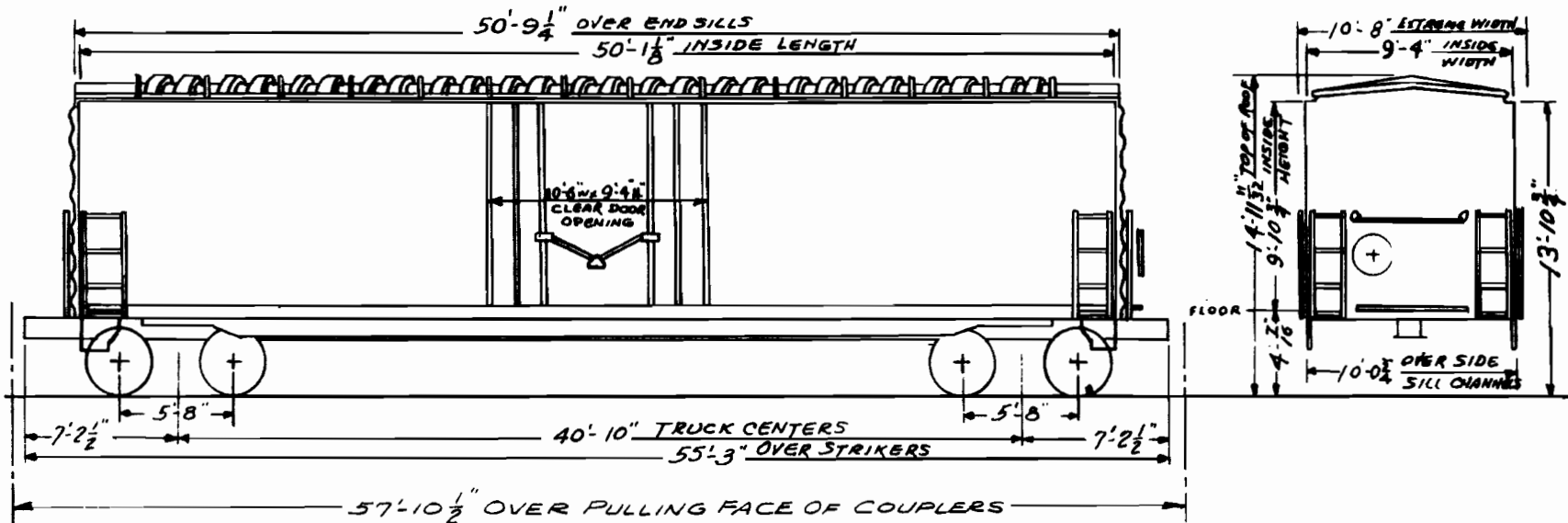


REVISION DATES				MECHANICAL DEPARTMENT		RR	SERIES	CLASS
						WM	36001-36020	B-124
				HUNTINGTON W. VA.		DATE 1-21-76		



GENERAL DATA	CAR BODY DATA	TRUCK DATA	MISCELLANEOUS
BUILT BY - EVANS PRODUCTS CO.	BRAKES - ABD 10X12 CONVENTIONAL SEE NOTE:4	TYPE - BARBER 9-2-C	NOTE: 1-LINING
YEAR BUILT - 1967	BRAKE ARRANGEMENT - A-1251	GENERAL DWG -	SIDES & ENDS 3/4" PLYWOOD CEILING 1/2"
CUBIC CAPY. - 4640	CENTER SILL - 41.2 LB. ZEE SECTION	JOURNAL - 6 X 11 R. B.	PLYWOOD.
AVERAGE LD. LMT. - 141800	COUPLER - E 67HT	SPRING TRAVEL - 3 11/16"	NOTE: 2-INTERIOR EQUIPMENT
AVERAGE LT. WT. - 78200	DRAFT GEAR - M-901	WHEELS - 33" DIA. MWWS	SIDE WALL FILLERS - EVANS 6-POSITION.
BUILDERS REFERENCE - 1-1016-A	DOOR - SUPERIOR - SINGLE PLUG	WEIGHT ONE TRUCK -	LOAD DIVIDERS - EVANS 2-PER CAR. CARS
RAILROAD SPEC. -	DOOR ARRANGEMENT - A-1252	BRAKE SHOES - 1 1/2" COMPOSITION	ALSO EQUIPPED FOR 2-HEATERS.
GENERAL ARRANGEMENT DWG. - A-1247	END - CORR. STEEL, 1/4" BOTT. 3/16" TOP		NOTE: 3-INSULATION
CLEARANCE - PLATE "B"	FLOOR - 2 1/4" LAM. PANEL, 5/8" PLY. SUB FLOOR		STYROFOAM - FLOOR 3 1/2" NO. 1 FIBERGLASS-
CURVATURE - UNCOUPLED -	HAND BRAKE -		ENDS & SIDES 3" CEILING 3 1/2"
COUPLED TO BASE CAR -	LINING - SEE NOTE: 1		NOTE: 4
CENTER OF GRAVITY - LIGHT -	UNDERFRAME - EVANS HYDRA-CUSHION		7 1/2" BUSHED CYLINDER
LOADED -	20" TRAVEL		