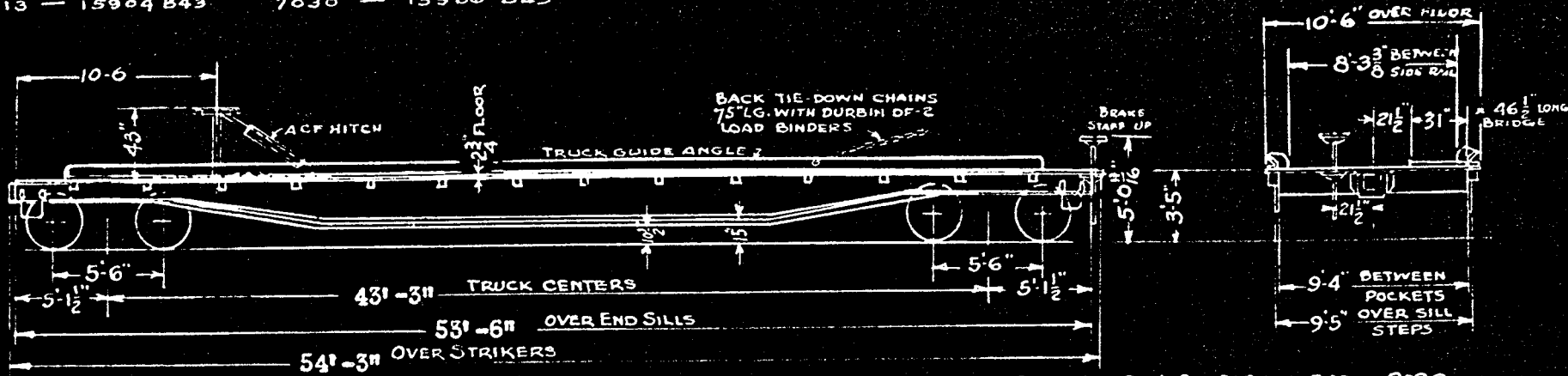


Built June 1959, Bethlehem Steel Co. Order No. DF-3400-286
 Converted to Piggyback Cars June, July 1960 Co. Shops

10 Piggyback Cars in Series 7001-7030
 Class FC

Cars No.	Hitch Serial No.	Cars No.	Hitch Serial No.
7001	15900 B43	7020	15901 B43
7002	15903 B43	7022	15902 B43
7006	15898 B43	7024	15907 B43
7012	15905 B43	7025	15909 B43
7013	15904 B43	7030	15906 B43



EQUIPPED WITH CCBRA SHOES - CARS NO. 7001, 7002, 7006, 7020, 7029

GENERAL		BRAKES	
1. Capacity - Nominal	100,000 lbs.	15. Brake Schedule	W.A.B.Co. "AB" 10" x 12"
2. Load Limit	110,600 lbs.	16. Brake Power	32,556 lbs. 56%
3. Light Weight	58,400 lbs.	17. Hand Brake	Multi-power, Drop Staff, Universal
4. Maximum Load on Rails	169,000 lbs.	18. Slack Adjuster	Rotary Manual, Universal
5. Underframe	All welded construction Center Sill 30"-116 lbs. I-Beam Side Sill 5/16" Plate, End Sill 5/16" Pressing	19. Type	2-1/2" Spring Travel, A-3 Ride Control A.S.F. with Timken "AP" Roller Bearing
6. Floor	2-3/4" Square edge Untreated Oak	20. Frame	Narrow Pedestal Type A.A.R. Cast Steel
7. Hinged Bridges at diagonal corners	Diamond Tread Steel	21. Snubbing Device	Bolster Friction Blocks A.S.F.
8. Side Guard Rails	1/2" x 4" x 8"	22. Side Bearings	Single Roller Type Stucki
9. Draft Gear	Miner RF-333	23. Brake Beams	A.A.R. No. 18 Unit, Davis Brake Beam Co.
10. Draft Keys	A.A.R., Retainer Lock I.R.E. Co.	24. Brake Beam Wear Plates	Pittsburgh Forging Co.
11. Draft Attachments	A.A.R. Y-40 Cast Steel Yoke	25. Brake Levers & Bottom Connectors	Pittsburgh Forging Co.
12. Coupler AAR Type E, 6 1/4" x 8", Articulated, Bottom Operated		26. Axles	5-1/2" x 10" A.A.R. D-6-D
13. Coupler Centering Device	None	27. Wheels	A.A.R. D-33, Multiple Wear 33"
14. Coupler Uncoupling Device	"Standard" SREI Co.	28. Roller Brgs. with Heat Indicators	"AP" 5 1/2" x 10" Timken
		29. Bearing Lubrication	A.A.R. RB Grease
		30. Train Length Coupled	56'-9"