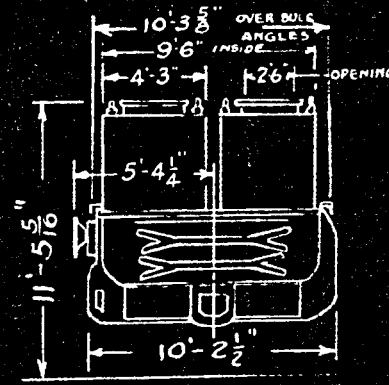
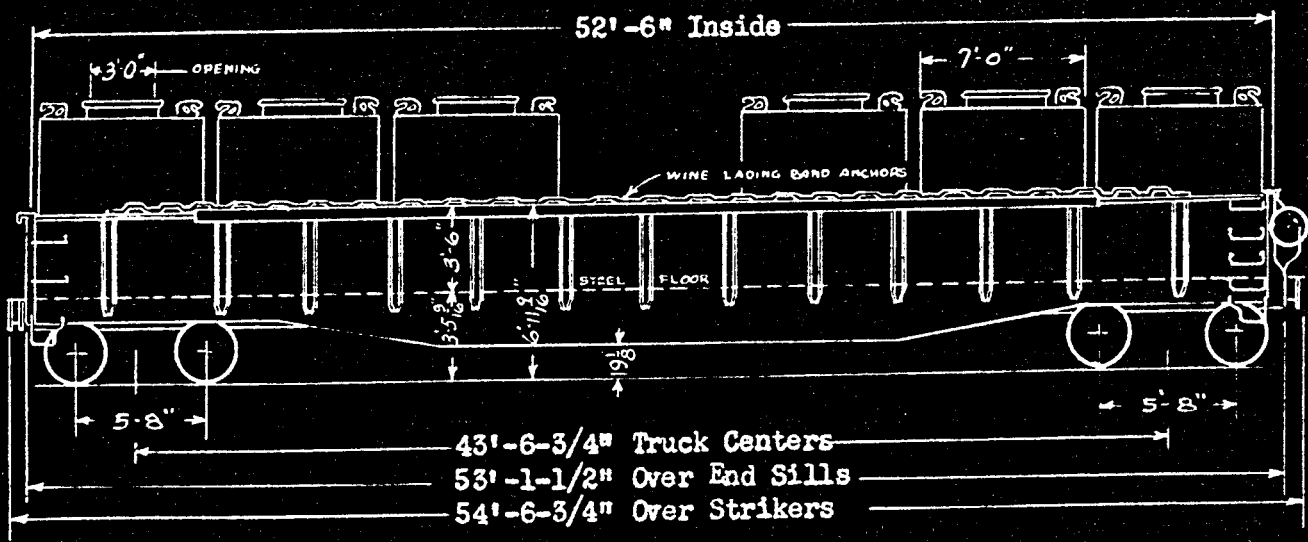


BUILT SEP. 1951 BETHLEHEM STEEL CO. ORDER NO. DF-159
 CONVERTED DEC. 1961, COMPANY SHOPS

Container Cars Nos. 5451-5455
 Class IC

WM SYSTEM CLASSIFICATION G-17

NEW NO. 5451, 5452, 5453, 5454, 5455
 OLD NO. 5426, 5427, 5428, 5429, 5430
 SERIAL NO. 54246, 54027, 54001, 54367, 54448



CARS NO. 5451, 5452, 5454, 5455
 10 CONTAINERS C-40 to C-500
 CU FT. 145, LT. WT. 2210 LBS
 CAR NO. 5453
 10 CONTAINERS C-101 to C-220
 CU FT 145, LTWT 2900 LBS

GENERAL			DRAFT (Continued)	
1. Capacity	Nominal	200,000 lbs.	16. Coupler Uncoupling Device	"Standard" SREMcO.
2. Load Limit		187,200 lbs.	BRAKE	
3. Light Weight of car with blocking		63,800 lbs.	17. Brake Schedule	"AB" 10" x 12" WABCo.
4. Maximum Load on Rails		251,000 lbs.	18. Brake Shoes	Cobra V-101 WABCo.
BODY			19. Brake Power	Ratio 6 to 1 9.5% Loaded
5. Underframe	Center Sills	A.A.R. "Z" 41.2 lbs.	20. Hand Brake	"Non Spin" Universal, Ajax
6. Floor and Sides	1/4" steel	Side Stakes 26	TRUCKS	
7. Side Top Reinforcing Angle	4" x 4" x 1/2" x 39'-0" long		21. Frames	2-1/2" spring travel Barber S-2-A
8. Drop End Doors	Dreadnaught 3/8" Steel	SREMcO.	22. Brake Hanger Suspension - Mobil	I.R.E.Co.
9. End Door Reinforcement	5" x 4 1/2" x 7/16" Bulb Angle		23. Side Bearings	Stucki
10. Door Opening	8'-11-1/2" Wide		24. Journal Lubricators	Lube Pad Hennessy
11. End Door Locks and Lading Band Anchors	Wine		25. Axles 6 1/2" x 12", AAR D-6-G, M-126, Grade F,	Normalized & Tempered
DRAFT			26. Wheels 33", AAR G-33, MW, Class C,	Heat Treated
12. Draft Gear	Hulson, Miner, Peerless		27. Brake Beam	AAR No. 18 Creco
13. Draft Key - AAR	Retainer Lock I.R.E.Co.		28. Brake Beam Hangers	Loop Type Schaefer
14. Coupler	AAR Type E, 6 1/4" x 8", Bottom Operated		29. Brake Beam Support	AAR Safety Ledge
15. Striker & Coupler Carrier with Coup. Ht. Adj.	SREMcO.		30. Train Length Coupled	57' 0-3/4"