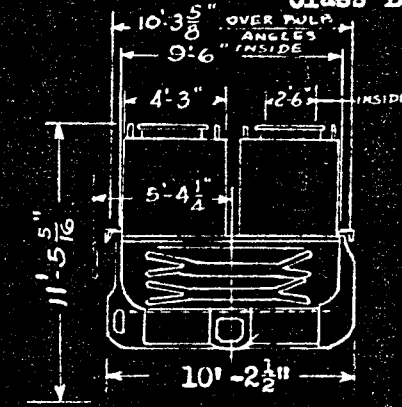
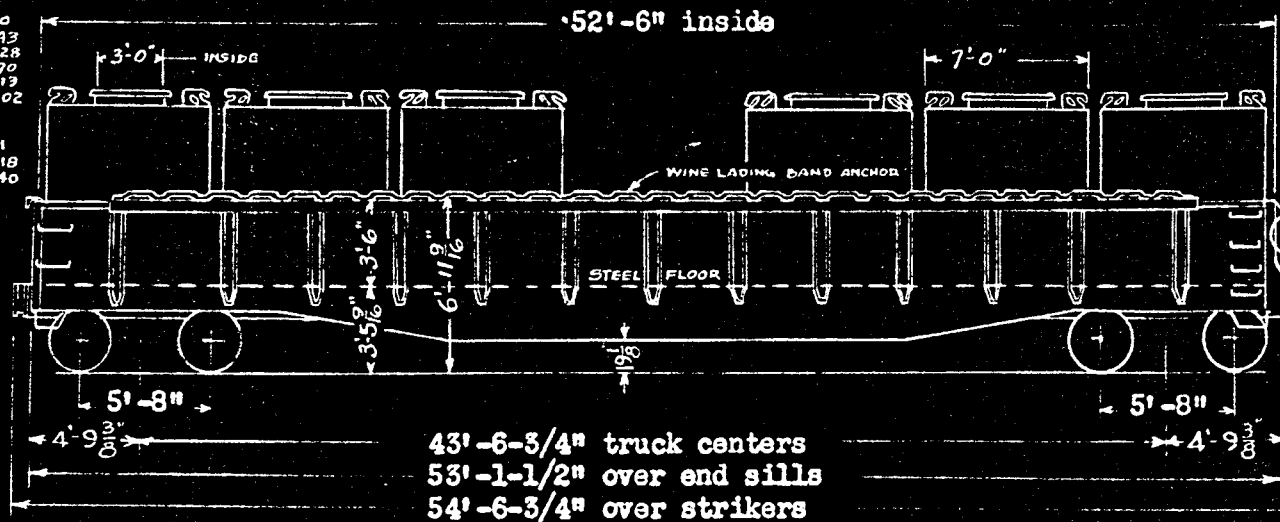


Built Sep. - Oct. 1951, Bethlehem Steel Company Order No. DF 19  
 Converted Dec. 1960-Feb. 1961 Company's Shops (Series 54001-54460)

Container Cars 5441-5447  
 Class LG

DEC. 1960  
 5441-54243  
 5442-54428  
 5443-54270  
 5444-54319  
 5445-54302

FEB. 1961  
 5446-54318  
 5447-54340



5441-5444, 10 FLOW CONTROL  
 CONTAINERS C-601 to C-640  
 145 CU. FT. 2210 LT. WT.  
 5445-5447, 8 DROP BOTTOM  
 CONTAINERS C-221 to C-340  
 145 CU. FT. 2040 LT. WT.

GENERAL		DRAFT (Continued)	
1. Capacity - Nominal	140,000 lbs.	15. Striker & Coupler Carrier with coup.ht.adjust.	SREM Co.
2. Load Limit	132,000 lbs.	16. Coupler Uncoupling Device Standard "Safety"	SREM Co.
3. Light Weight of car with blocking	59,800 lbs.	BRAKE	
4. Maximum Load on Rails	210,000 lbs.	17. Brake Schedule	W.A.B. Co. AB 10" x 12"
BODY		18. Brake Power	40,100 lbs. 67%
5. Framing - Underframe - Center Sill	A.A.R. Z 41.2 lbs.	19. Hand Brake	"Non-Spin" Universal, Ajax
6. Floor and Sides	1/4" Steel Side Stakes 26	TRUCKS	
DOORS		20. Frames	2-1/2" Spring Travel A-3 Ride Control ASF
7. Drop End Doors	Dreadnaught 3/8" Steel SREM Co.	21. Brake Slack Adjuster	Type "K" Royal
8. End Door Reinforcement	5" x 4 1/2" x 7/16" Bulb Angles	22. Brake Levers and Connectors	Schaefer
9. Door Opening	3'-6" high x 8' - 11-1/2" wide	23. Side Bearings	Stucki
10. End Door Locks	Wine	24. Lubricator Pads	Journapak, Hennessy
11. Side Ladders	Car Builder	25. Snubbers	Bolster Friction block ASF
DRAFT		26. Axles	A.A.R. 6" x 11", Wheels 1-Wear Wrot Steel 33"
12. Draft Gear	Hulson, Miner, Peerless	27. Brake Beam Hangers	Flannery
13. Draft Key - A.A.R.	Retainer Lock I.R.E.Co.	28. Brake Beam Supports and Safety Device	Creco 4-Point
14. Couplers	A.A.R. Type "E" 6 1/4" x 8" Bottom Operated	29. Train Length Coupled	57" - 0-3/4"