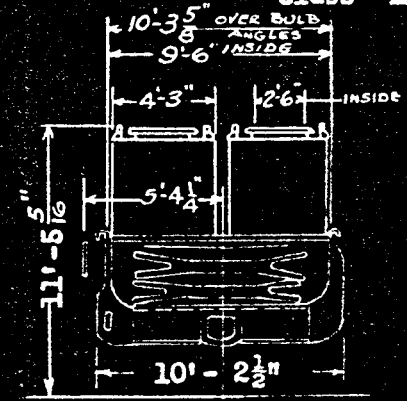
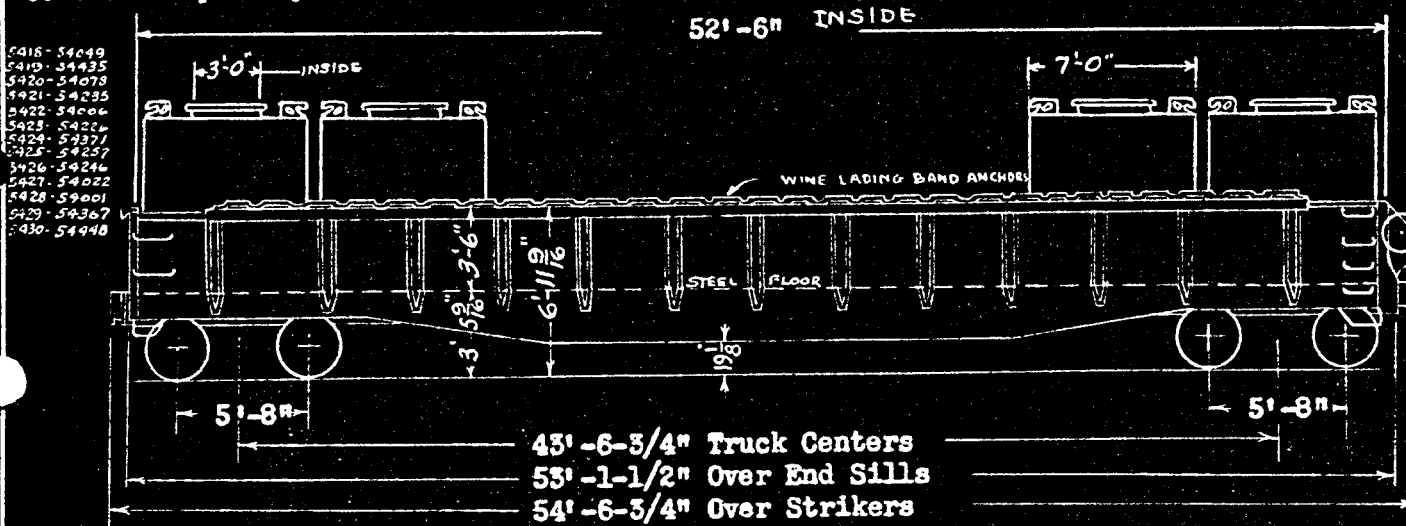


Built Sept.-Oct. 1951, Bethlehem Steel Co. Order No. DF-159  
 Converted Apr.-May 1957 Company's Shops (Series 54001-54460)

Container Cars Nos. 5418-5430  
 Class LP



8 Containers per Car  
 Nos. C-401 to C-500  
 Cu. Ft. 145 Lt. Wt. 2210

CAR NO. 5418 INCLUDES CONTAINERS NOS 134,166  
 " " 5421 " " " 143,195

| GENERAL                                |  | DRAFT (Continued)                                  |   |
|--|--|--|---|
| 1. Capacity                            | 132,000 lbs.                             | 15. Striker & Coupler Carrier with Coup.Ht.Adjust. | SREM Co.                                  |
| 2. Load Limit                          | 132,000 "                                | 16. Coupler Uncoupling Device                      | Standard "Safety" SREM Co.                |
| 3. Light weight of car with blocking   | 58,700 "                                 | BRAKE  |   |
| 4. Maximum Load on Rails               | 210,000 "                                | 17. Brake Schedule                                 | W.A.B.Co. "AB" 10" x 12"                  |
| BODY                                   |  | 18. Brake Power                                    | 40100 lbs. 68%                            |
| 5. Framing - Underframe - Center Sills | AAR 2-41.2 "                             | 19. Hand Brake                                     | "Non-Spin" Universal, Ajax                |
| 6. Floor and Sides 1/4" Steel          | Side Stakes 26                           | TRUCKS   |   |
| DOORS                                  |  | 20. Frame  | 2 1/2" Spring Travel A-3 Ride Control ASF |
| 7. Drop End Doors                      | Dreadnaught 5/8" Steel SREM Co.          | 21. Brake Slack Adjuster                           | Type "K" Royal                            |
| 8. End Door Reinforcement              | 5" x 4 1/4" x 7/16" Bulb Angles          | 22. Brake Levers and Connectors                    | Schaefer                                  |
| 9. Door Opening                        | 3'-6" High x 8'-11 1/2" Wide             | 23. Side Bearings                                  | Stackli                                   |
| 10. End Door Locks                     | Wine                                     | 24. Packing Retainers-Sprg.Pkg.Corp.               | Union Sprg. & Mfg.Co.                     |
| 11. Side Ladders                       | Car Builders                             | 25. Snubbers                                       | Bolster Friction Block ASF                |
| DRAFT                                  |  | 26. Axles - AAR 6" x 11"                           | Wheels - 1-Wear Wrot Steel 33"            |
| 12. Draft Gear                         | Hulson, Miner, Peerless                  | 27. Brake Beam Hangers                             | Flannery                                  |
| 13. Draft Key-AAR                      | Retainer Lock I.R.E.Co.                  | 28. Brake Beam Supports and Safety Device          | Creco 4-Point                             |
| 14. Coupler                            | AAR Type "E" 6 1/4" x 8" Bottom Operated | 29. Train Length Coupled                           | 57'- 0-3/4"                               |