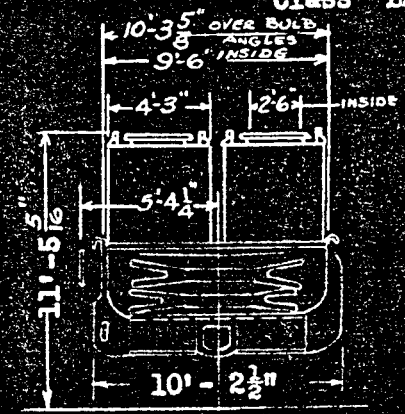
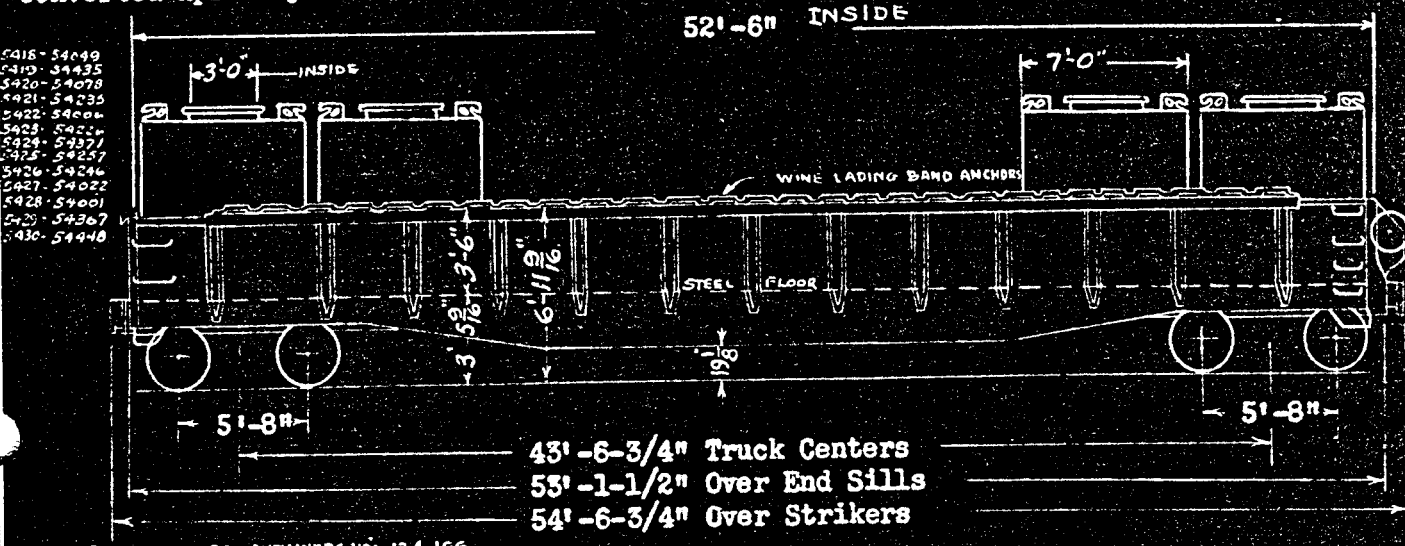


Container Cars Nos. 5418-5430
Class LG

Built Sept.-Oct. 1951, Bethlehem Steel Co. Order No. DF-15
Converted Apr.-May 1957 Company's Shops (Series 54001-54460)



8 Containers per Car
Nos. C-401 to C-500

Cu. Ft. 145
Lt. Wt. 2210

CAR NO. 5418 INCLUDES CONTAINERS NOS 134,166
" 5421 " " " 143,195

GENERAL		DRAFT (Continued)	
1. Capacity (Nominal - 140000 lbs)	132,000 lbs.	15. Striker & Coupler Carrier with Coup.Ht.Adjust.	SREM Co.
2. Load Limit (Ld.Lmt. 8 Containers= 132000 lbs.)	132,000 "	16. Coupler Uncoupling Device	Standard "Safety" SREM Co.
3. Light weight of car with blocking	58,700 "	BRAKE	
4. Maximum Load on Rails	210,000 "	17. Brake Schedule	W.A.B.Co. "AB" 10" x 12"
BODY		18. Brake Power	40100 lbs. 68%
5. Framing - Underframe - Center Sills	AAR Z-41.2 "	19. Hand Brake	"Non-Spin" Universal, Ajax
6. Floor and Sides 1/4" Steel	Side Stakes 26	TRUCKS	
DOORS		20. Frame	2 1/2" Spring Travel A-3 Ride Control ASF
7. Drop End Doors	Dreadnaught 3/8" Steel SREM Co.	21. Brake Slack Adjuster	Type "K" Royal
8. End Door Reinforcement	5" x 4 1/2" x 7/16" Bulb Angles	22. Brake Levers and Connectors	Schaefer
9. Door Opening	3'-6" High x 8'-11 1/2" Wide	23. Side Bearings	Stückli
10. End Door Locks	Wine	24. Packing Retainers-Sprg.Pkg.Corp.	Union Sprg. & Mfg.Co.
11. Side Ladders	Car Builders	25. Snubbers	Bolster Friction Block ASF
DRAFT		26. Axles - AAR 6" x 11"	Wheels - 1-Wear Wrot Steel 33"
12. Draft Gear	Hulson, Minser, Peerless	27. Brake Beam Hangers	Flannery
13. Draft Key-AAR	Retainer Lock I.R.E.Co.	28. Brake Beam Supports and Safety Device	Creco 4-Point
14. Coupler	AAR Type "E" 6 1/4" x 8" Bottom Operated	29. Train Length Coupled	57'-0-3/4"