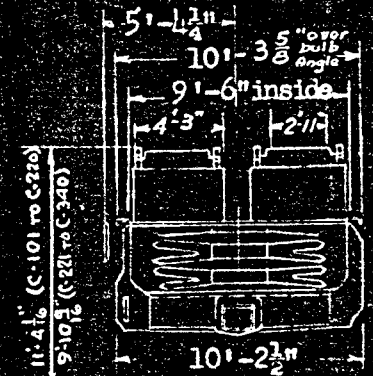
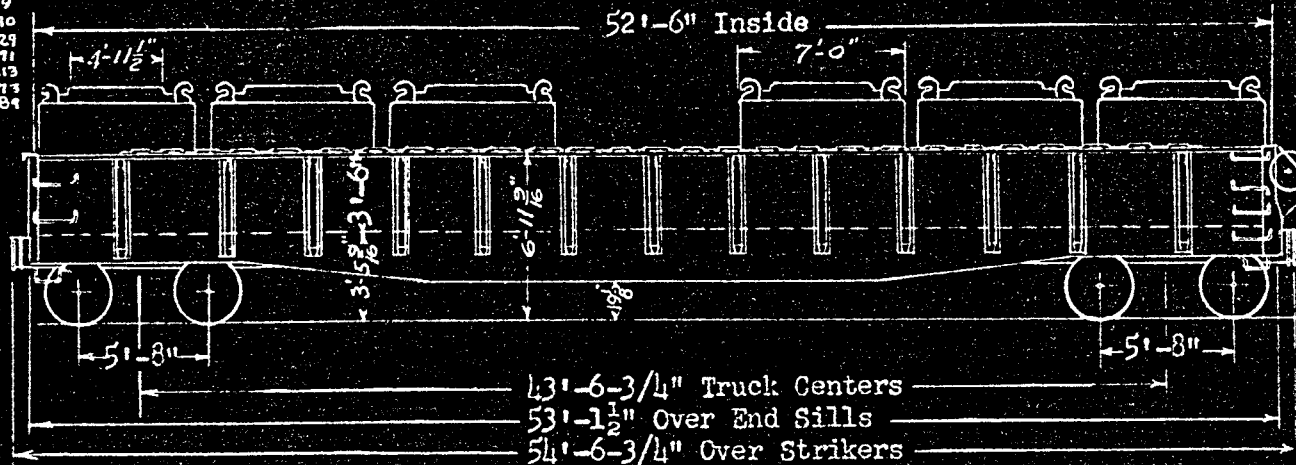


5408 54798
5409 54710
5410 54834
5411 54909
5412 54890
5413 54829
5414 54671
5415 54813
5416 54773
5417 54784



5408, 5409, 5410, 5413, 5414
8 CONTAINERS *C-101 to C-220
5411, 5412, 5415, 5416, 5417
12 CONTAINERS *C-221 to C-340

	CUFT	CAPY	LT.WT.
C-101 to C-220	134	10,000*	2900
C-221 to C-340	145	10,500*	2040

GENERAL	DRAFT (Continued)
1. Capacity - level 1745 cu.ft. Nominal 140,000 lbs.	16. Striker & Coupler Carrier with Coup.Ht.Adjust. SREM Co.
2. Load Limit 126,800 lbs.	17. Coupler Uncoupling Device SREM Co.
3. Light Weight-of car 58400 #, with cont'rs (12) 83,200 lbs. <small>C-221 to C-340</small>	BRAKE
4. Maximum Load on Rails 210,000 lbs.	18. Brake Schedule W.A.B.Co. "AB" 10" x 12"
BODY	19. Brake Power 40100 lbs. 69 %
5. Framing - Underframe- Center Sills AAR 2-41.2 lbs./ft.	20. Hand Brake Non Spin, Ajax
6. Floor and Sides 1/4" Steel, Side Stakes 26	TRUCKS
7. End Doors (Blocked in Place)	21. Frame 2 1/2" Spring Travel A-3 Ride Control ASF
8. Drop End Doors - Dreadnaught 3/8" Steel SREM Co	22. Brake Slack Adjuster Type "K" Royal
9. End Door Reinforcement 5" x 4 1/2" x 7/16" Bulb Angle	23. Brake Levers and Connectors Schaefer
10. End Door Opening 3'-6" High x 8'-11 1/2" Wide	24. Side Bearing Stucki
11. End Door Locks Wine	25. Packing Retainers - Sprg.Pkng.Corp. Union Sprg.&Mfg.Co.
12. Side Ladders Car Builders	26. Snubbers Bolster Friction Block
DRAFT	27. Axles AAR 6" x 11", Wheels - 1-wear Wrot Steel 33"
13. Draft Gear Peerless	28. Brake Beam Hangers Flannery
14. Draft Key - AAR Retainer Lock I.R.E. Co.	29. Brake Beam Supports and Safety Device, Creco 4 Point
15. Coupler AAR Type "E" 6 3/4" x 8" Bottom Operated	30. Train Length Coupled 57'-0-3/4"