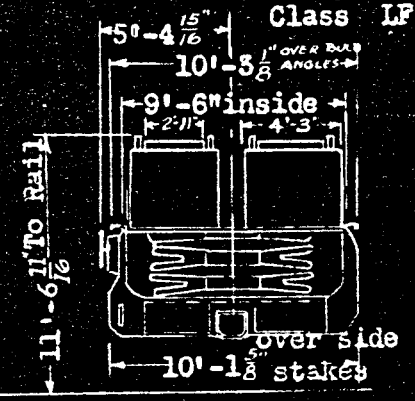
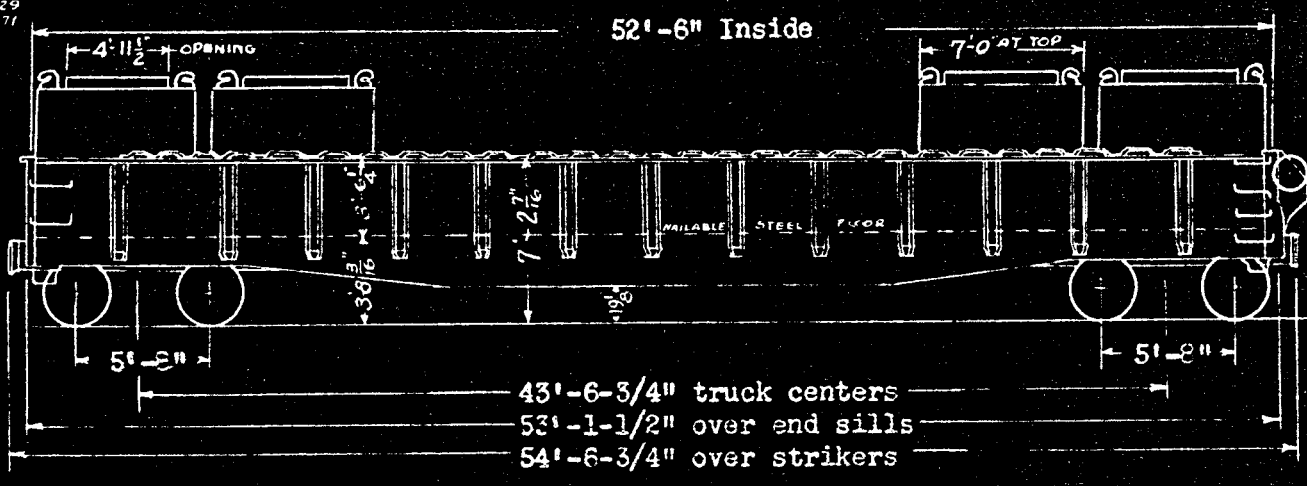


5408-54778
5409-54710
5410-54834
5413-54829
5414-54671



8 Containers per car
Nos. C-101 to C-220
Cu.Ft. 145
Lt.Wt. 2900

GENERAL		DRAFT (Continued)	
1. Capacity	125,400 lbs.	16. Striker & Coupler Carrier with Coup.Ht.Adj.	SREM Co.
2. Load Limit	125,400 "	17. Coupler Uncoupling Device	"Standard" SREM Co.
3. Light weight of car with blocking	61,400 "	BRAKE	
4. Maximum load on rails	210,000 "	18. Brake Schedule	W.A.B.Co. "AB" 10" x 12"
BODY		19. Brake Power	40,104 lbs. 65%
5. Underframe	Center Sills AAR "Z" - 41.2 lbs.	20. Hand Brake	Klasing, Universal, Equipco
6. Sides-1/4"Steel, Side Stakes-26-3/8"-7/16"Pressed Steel		TRUCKS - 2 1/2" Spring Travel	
7. Floors	Nailable Steel Flooring G.L.S. Corp.	21. Frames - A3 Ride Cont. ASF, Barber S-2-A Std. Car Truck	
8. Top Reinforcing Angle 4" x 4" x 1/2" x 39'0" lg. Angle		22. Brake Slack Adjuster	Type "MS" O'Boyle
9. Drop End Doors	Dreadnaught 3/8" Steel SREM Co.	23. Brake Levers and Connectors	Schaefer
10. End Door Reinforcement	5" x 4 1/2" x 7/16" Bulb Angle	24. Side Bearings	Stucki
11. Door Opening	8' - 11 1/2" Wide	25. Packing Retainers - Spring Packing, U.S.Mfg.Co., Modern	
12. End Door Locks & Lading Band Anchors	Wine	26. Snubbers	Bolster Friction Block
DRAFT		27. Axles - AAR 6" x 11"	Wheels - 1-Wear Hot Steel 33"
13. Draft Gear	Minor RF-333, Card West Edgewater NY-11-F B-32-KA	28. Brake Bear No.18 Creco	Brake Beam Hangers Flannery
14. Draft Key - AAR	Retainer Lock I.R.F.Co.	29. Brake Beam Supports and Safety Devices	Creco 4-Point
15. Coupler	A.A.R. Type "E" 6 1/4" x 8" Bottom Operated	30. Train Length Coupled	57' - C-3/4"