

Converted Dec. 1954 - Co's. Shop, from Series 50801-900  
(G.S.C. Lot 00-281, Oct. 1939)

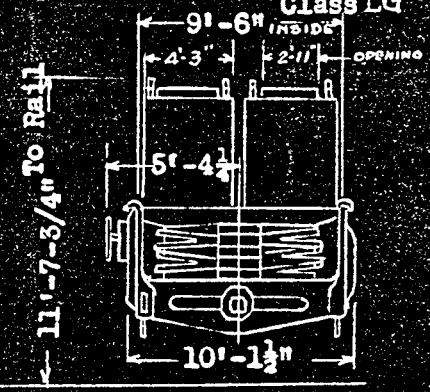
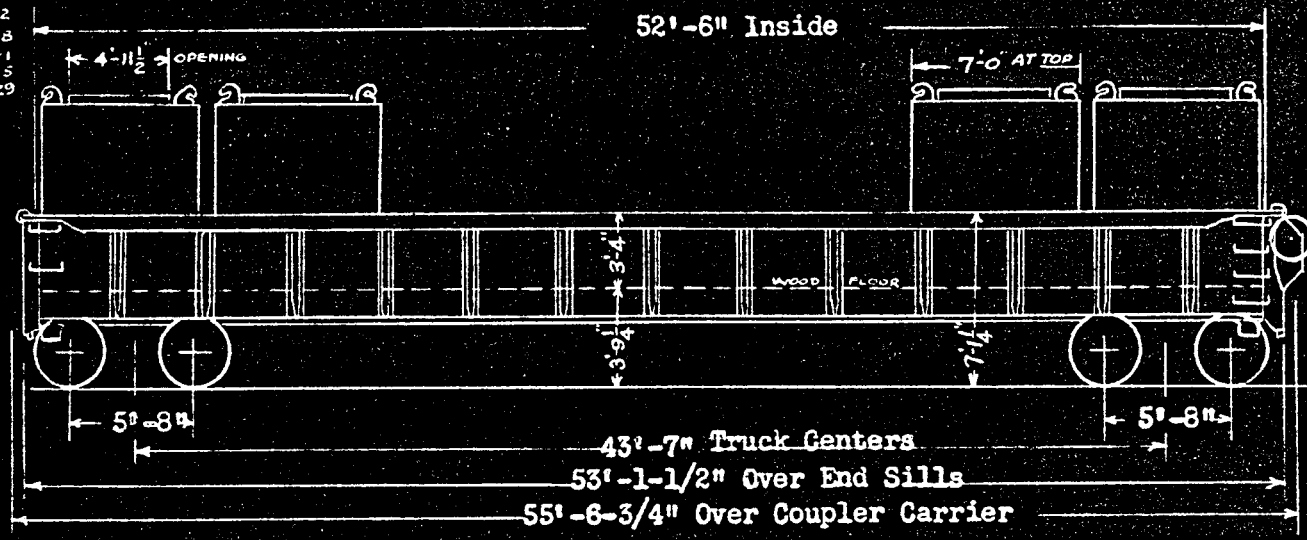
Container Cars Nos. 5401, 5402

5404, 5405

5406

Class LG

5401-5402  
5403-5404  
5405-5406  
5407-5408  
5409-5410



8 Containers per car  
Nos. C-101 to C-220

Cu. Ft.  
145

Lt. Wt.  
2900

GENERAL			DRAFT (Continued)		
1. Capacity	(Nominal - 140,000 lbs.)	131,300 lbs.	14. Coupler Centering Device	None	
2. Load Limit	(Lt. Wt. 8 Containers - 23,200 lbs.)	131,300 "	15. Coupler Uncoupling Device	Imperial Rotary	
3. Light Weight of car with blocking		55,500 "	AIR BRAKE		
4. Maximum Load on Rail		210,000 "	16. Brake Schedule	W.A.B.Co. "AB" 10" x 12"	
BODY			17. Brake Power	40,200 lbs.	72%
5. Framing - Underframe Duryea	Superstructure Steel		HAND BRAKE		
6. Floor 2-3/8" Y.P.	Sheathing 1/4" Steel		18. Operating Device	Ajax 22" Wheel	
DOORS (Drop End)			TRUCKS		
7. Door Operating Device		Wine	19. Frame	Cast Steel Double Truss	
8. Door Opening	8' - 11-1/2" x 3' - 2-1/4"		20. Dead Lever Fulcrum	Wine Brake Balancer	
ROOF			21. Side Bearing	Stucki All Steel	
9. Make		None	22. Lateral Motion Device	None	
10. Carlines		None	23. Snubber	Cardwell Friction Type "A"	
DRAFT			24. Axles	A.A.R. 6" x 11"	
11. Draft Gear	Duryea Cushion		25. Wheels	33" - One-wear Wrot Steel	
12. Draft Attachments	Duryea Keyed Yoke		26. Brake Beam Auxiliary Support	Creco Economy	
13. Couplers	A.A.R. Type "E" 6-1/4" x 8"		27. Train length, coupled	57'-10"	