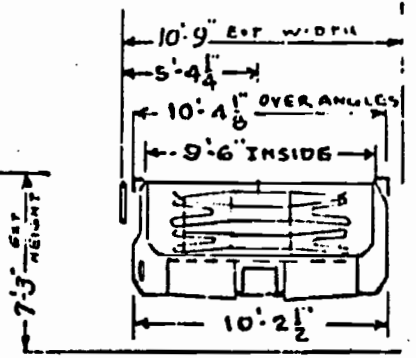
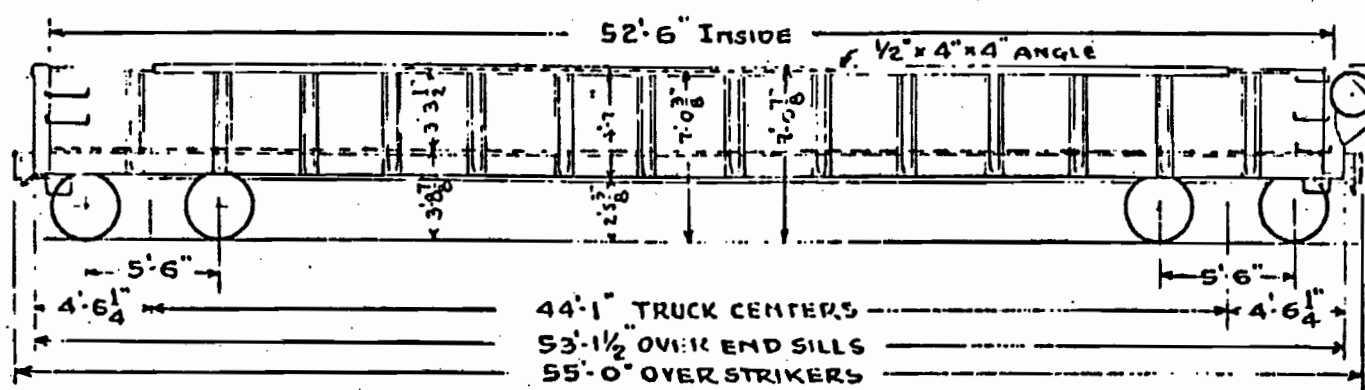


WM System Classification G-23



GENERAL		DRAFT (continued)	
1. Capacity	Level 1642 cu. ft. Nominal 110,000 lbs.	16. Coupler Uncoupling Device	"Standard Safety" SRE Co.
2. Load Limit	125,000 lbs.	17. Striker & Coupler Carrier with Coup.Ht.Adjust.	None
3. Light Weight	54,000 lbs.	BRAKE	
4. Maximum load on rails	177,000 lbs.	18. Brake Schedule	W.A.B.Co. "AB" 10" x 12"
BODY		19. Brake Power	55,800 lb. 82%
5. Center Sills	"2" # 36.21#, End Sections C.S.Gen.Steel Ind.	20. Hand Brakes	Ajax
6. Floor	2-3/8" Untreated Mixed Oak	TRUCKS	
. Sides 1/4" steel, Top Reinforcing Angle 4" x 4" x 1/2"		21. Frame	2 1/2" spring travel A-3 Ride Control A.S.F.
8. Drop End Doors & Hinges	Dreadnaught 3/8" steel SRE Co.	22. Brake Balancer	Wine
9. End Door Reinforcement	5" x 4 1/2" x 7/16" Bulb Angle	23. Brake Levers and Bottom Connectors	Schaefer
10. Door Opening	8' 11-1/4" x 3' 2-1/2"	24. Side Bearings	Hiner
11. End Door Locks	Wine	25. Dust Guard Oil Seals	Type AR-12 Hennessy
12. Side Ladders	Car Builder	26. Snubbers	Bolster Friction Blocks A.S.F.
DRAFT		27. Axles	AAR 5 1/2" x 10" - Wheels Steel Multiple Wear 33"
15. Draft Gear	A-22-XL Minor	28. Brake Beam Hangers	Loop Type - Flannery
14. Draft Key & Retainer	AAR Std. Key & I.R.E.Co. Pos.Lock	29. Brake Beam Supports & Safety Device	Creco 4 Point
13. Couplers	AAR Type "EM" 6"x8" Bottom Rotary Operated	30. Train Length Coupled	57' 6"