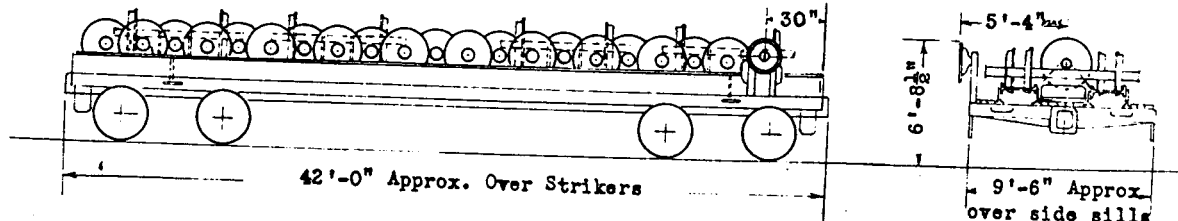


Longitudinal Pairs Secured with 2 Anchors Each



Capacity 80,000 lbs.

Maximum Load on Rails 136,000 lbs.

Wheel Cars Nos.	31	32	33	34	35	36	37	38	39	40		
1. Light Weight	41,100 lbs.	39,300 lbs.	41,500 lbs.	39,300 lbs.	38,500 lbs.	42,100 lbs.	45,700 lbs.	44,200 lbs.	47,100 lbs.	49,200 lbs.		
2. Load Limit	94,900 lbs.	96,700 lbs.	94,600 lbs.	96,700 lbs.	97,500 lbs.	93,900 lbs.	90,300 lbs.	91,800 lbs.	88,900 lbs.	86,800 lbs.		
3. Type Center Sill	AAR"J"40.3#	AAR"Z"36.21	12"Channel	AAR"Z"36.21#	AAR"Z"36.21#	AAR"J"40.3#	Fish belly	12"Channel	AAR"Z"36.21#	12"Channel		
4. Couplers AAR Opr.	Top	Bottom	Bottom	Bottom	Bottom	Top	Bottom	Bottom	Bottom	Bottom		
5. Yoke	2-Key	2-Key	2-Key	Vertical	Vertical	2-Key	Bottom	Bottom	Bottom	Bottom		
6. Striker	Plain	Cent.Device	Cent.Device	Cent.Device	Plain	Cent.Device	2-Key	Vertical	2-Key	2-Key		
7. Draft Gear	Farlow	National	Farlow	Cardwell-Westinghouse	Miner	Symington-Gould	Plain	Plain	Plain	Plain		
8. Hand Brake	Ajax	Universal	Ajax	Ajax	Ajax	Ajax	Miner	Cardwell-Westinghouse	Miner	Miner		
9. Truck - Frame	Integral	Integral	Integral	Integral	Integral	Integral	Ajax	Ajax	Ajax	Ajax		
10. Jour. Size & Wheels	5 1/2" x 10" - 33"	5" x 9" - 33"	5 1/2" x 10" - 33"	5 1/2" x 10" - 33"	5 1/2" x 10" - 33"	5 1/2" x 10" - 33"	Andrews	Integral	Integral	Integral		
11. Location Bottom Rod	Bottom	Center	Bottom	Center	Center	Bottom	5" x 9" - 33"	5 1/2" x 10" - 33"	5 1/2" x 10" - 33"	5 1/2" x 10" - 33"	12-4-69	
12. Bottom Rod Guard	Creco	None	AAR	None	None	Creco	Bottom	Bottom	Bottom	Bottom		
13. Brake Beam Support	AAR	Creco 4 Point	AAR	Creco 4 Point	Creco 4 Point	Creco 4 Point	Creco	Creco	Creco	Creco		
14. Snubbers (Truck)	Miner	Miner	Miner	Barber	Miner	Creco 4 Point	AAR	AAR	Creco 4 Point	AAR		
15. Side Bearings	Friction	Stuuki	Stuuki	Stuuki	Friction	Stuuki	Miner	Miner	Miner	Miner		
16. Pkg. Retainer Springs	8	8	8	8	8	8	Stuuki	Stuuki	Friction	Friction		
17. Auto. Slack Adjuster	OB"O'Boyle Automatic	Universal Mechanical	King Mechanical	Ajax "B" Mechanical	Ajax "B" Pneumatic	Westinghouse Pneumatic	8	8	8	8		