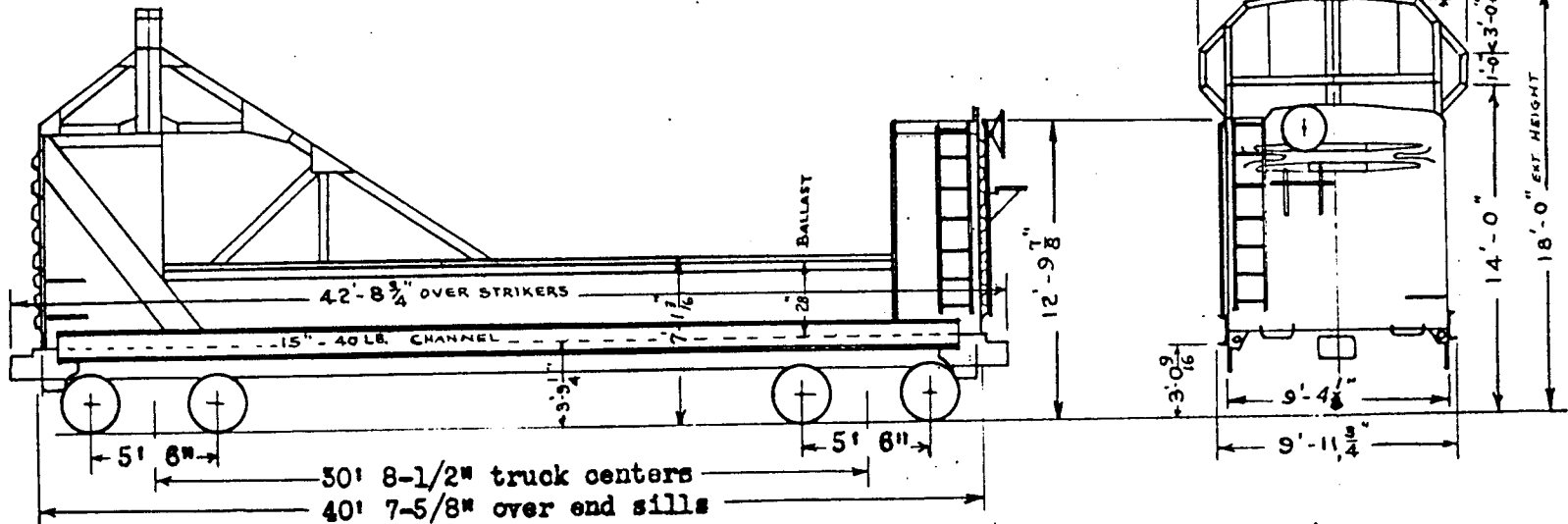


Converted from Box Car No. 27512, May 1962, Company Shop
 " " " " 27158 1963, " "

Tunnel Icicle Breaker Car no. 300
 301



GENERAL

DRAFT (Continued)

1. Car - Light Weight	49,500 lbs.	16. Coupler Centering Device	None
2. Ballast (Limestone - 2")	92,700 lbs.	17. Coupler Uncoupling Device	S.R.E.M.Co.
3. Total Gross Weight	142,200 lbs.	AIR BRAKE	
4. Maximum Load on Rails	177,000 lbs.	18. Brake Schedule	AB - 10" x 12" W.A.B.Co.
BODY		19. Brake Power	28,200 lbs. 60%
5. Framing - Underframe Duryea, steel welded and riveted		20. Hand Brake	Ajax
6. Center Sill 10" channel @ 25.3#/ft., Side Sill 6"x5 1/2"x5/16"		21. Brake Balancer	Wine
7. Side Reinforcement	15" 40 lb. channel	TRUCKS	
8. Floor	2-5/8" Y.P. Side Sheathing .10 Steel	22. Frame	Cast Steel Double Truss
9. Ends	Dreadnaught S.R.E.M.Co.	23. Side Bearing	Single Roller Type, Wine
10. Side Top Plate	W Section 9.9 lbs.	24. Snubber	Symington Coil-Elliptic
11. Side and End Ladders	Wine	25. Axles	A.A.R. 5 1/2" x 10"
12. Brake Step	Parish	26. Wheels	A.A.R. 1-Wear
DRAFT		27. Lateral Motion Device	None
15. Draft Gear - 7" Travel	Duryea Cushion	28. Bottom Rod Guard	Creco
14. Draft Attachments	Duryea Keyed Yoke	29. Brake Beam Auxiliary Support	Single Economy Creco
15. Coupler	A.A.R. Type "E" 6 1/2" x 8"	30. Train Length Coupled	44'-10-1/4"