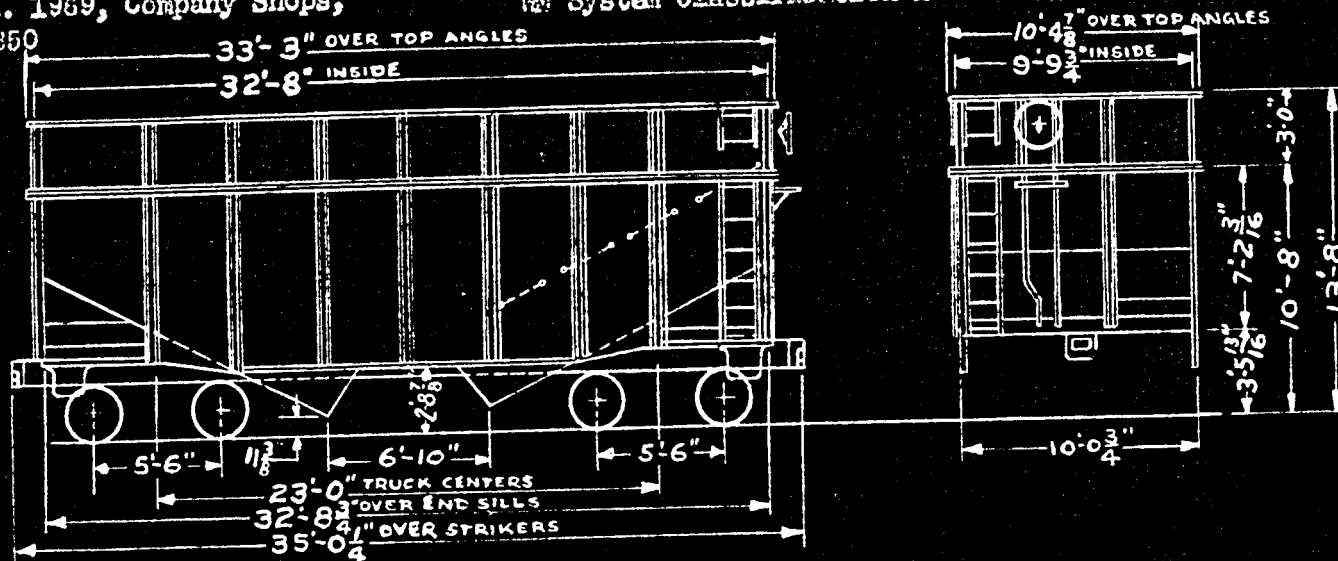


Built Feb. March 1954, Bethlehem Steel Company Order No. DP-9 (Class H-12)
 Converted Aug.-Sept. 1969, Company Shops, M System Classification H-31
 from Ser. 14401-14850

Wood Chip Cars, Nos. 2957-2960
 Class



GENERAL		DRAFT (Continued)		
1. Capacity - Level	2992 cu.ft.	110,000 lbs.	16. Striker & Coupler Carrier with Coup.Ht.Adjust. SRENCO	
2. Load Limit		126,000 lbs.	17. Coupler Uncoupling Device "Standard" SRENCO	
3. Light Weight		49,000 lbs.	BRAKES	
4. Maximum Load on Rails		177,000 lbs.	18. Brake Schedule	WABCO "AE" 10" x 12"
BODY			19. Brake Power	30,852 lbs. 68%
6. Framing	Underframe and Superstructure Steel		20. Hand Brake	"Non-Spin" Miner
6. Center Sills	AAR 12-7/8" Zee, 36.21 1/4"/ft.		TRUCKS 2 1/2" spring travel	
7. Slope Floor, Ends, Crossridge, Long Hood, Hoppers	3/8" steel		21. Frames	6 A.S.R. A-3 2 Barber S-2-A
8. Sides	1/4" steel		22. Brake Slack Adjuster	Type "MS" C'Boyle
9. Hopper Door, Frames and Fixtures	Wire		23. Brake Levers and Bottom Connector	Schaefer
10. Hopper Door Opening	4 - 25-7/8" x 36"		24. Side Bearings	Stucki
11. Bulb Angle - Side and End	5" x 4-1/2" x 7/16"		25. Journal Box Lids - Alco, Dustguard Guardwell	AR-18 Hennessy.
12. Side and End Ladders	"Safe-Grip" Wire		26. Snubbers	Bolster Friction Block
DRAFT			27. Axles	AAR 5 1/2" x 10" wheels 1-wear wrot steel 33"
13. Draft Gear	Single Spring Duryea		28. Brake Beam Hangers	Flannery
14. Draft Key & Retainer	AAR Std.Key & IRECC.Positive Lock		29. Brake Beam Supports and Safety Device	Craco 4-point
15. Coupler - AAR Type "S" 6 1/2" x 8"	Rotary Bottom Operated		30. Train Length Coupler	37'-3-3/4"