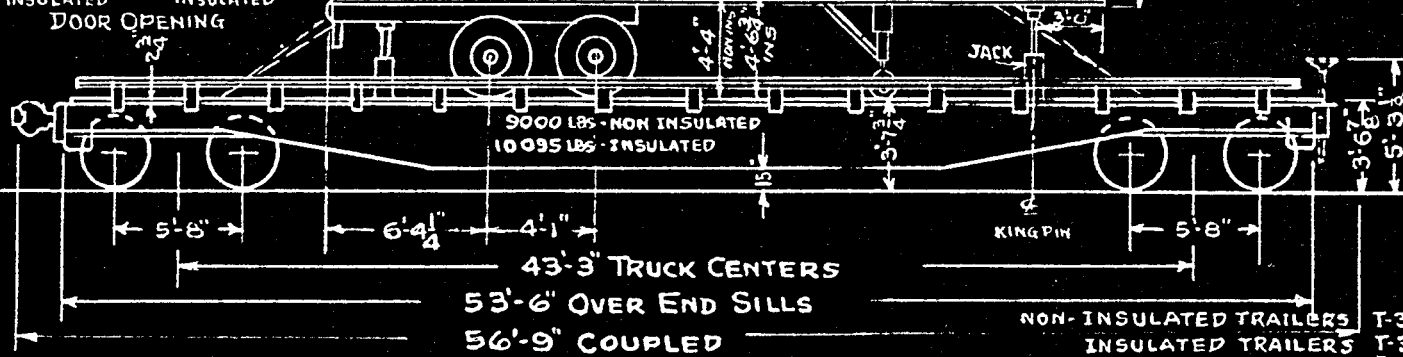
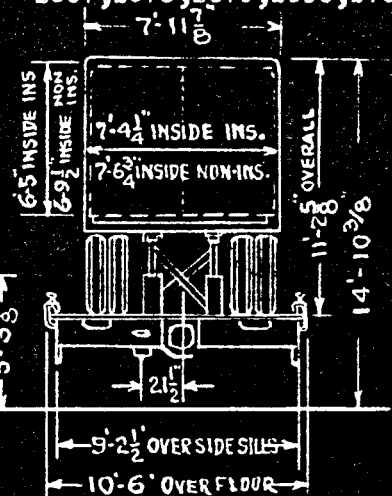
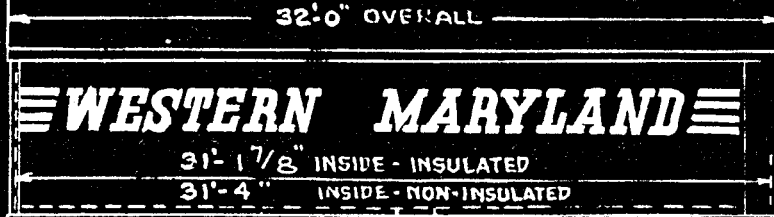
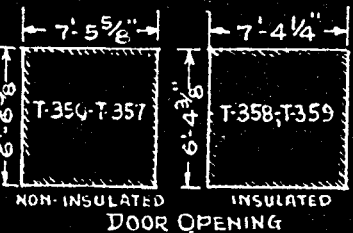


BUILT - FEB. MARCH 1953 GREENVILLE STEEL CAR CO. ORDER NO. 584  
 CONVERTED TO PIGGY BACK CARS APRIL, 1955. COMPANY SHOP.

Piggyback Cars Nos. 2607, 2614, 2619, 2647, 2647  
 Class FC  
 2667, 2675, 2679, 2685, 2702

32'-0" OVERALL



NON-INSULATED TRAILERS T-350-T-357 SERIAL NOS 1-07197-107206  
 INSULATED TRAILERS T-358-T-359 BUILT JUNE, 1955 TRAILMOBILE INC.

FLAT CAR	TRUCKS	2-1/2" Spring Travel, Type S-2-A, Barber
1. Capacity - Nominal	140,000 lbs.	16. Frame Cast Steel, Integ. Box modified for Timken Bearings
2. Load Limit	144,300 lbs.	17. Snubbers Bolster Friction Block
3. Light Weight	65,700 lbs.	18. Brake Hanger Suspension "Mobile" I.R.E.Co.
4. Maximum Load on Rails	210,000 lbs.	19. Side Bearings - Stucki, Brake Beams - Creco No. 18
<b>BODY</b>		20. Brake Beam Support and Safety Device Creco 4 Point
5. Underframe - Steel	Fishbelly Center and Side Sills	21. Roller Bearings 6" x 11" Timken
6. Floor	2-3/4" Square edged Untreated Mixed Oak	22. Axles 6" x 11" A.A.R. Wheel 1-Wear Wrot Steel 33"
7. Stake Pockets	Each end 2	23. Bearing Lubrication Texaco Grease No. 979
8. Hinged Bridges at diagonal corners - Diamond Tread Steel		<b>TRAILER</b> TRAILMOBILE - MODEL C-2, ALUMINUM SIDES AND DOORS. STEEL FRAMING AND UNDERFRAME. TRAILMOBILE TANDEM AXLE
9. Draft Gear	Cardwell-Westinghouse NY-11-F	24. Capacity - Insulated 1467 cu.ft, Non Insulated 1607 cu.ft.
10. Draft Keys - A.A.R.	Retainer Lock I.R.E.Co.	25. Light Weight - Insulated 12820 lbs, Non Insulated 11160 lbs.
11. Draft Attachments	A.A.R. Vertical Plain Yoke	26. Doors-Rear, full length with Two Locks & Safety Chains
12. Coupler	A.A.R. Type "E", 6-1/4" x 8" Bottom Operated	27. Floors - 1-3/8" (non-ins), 2" (ins), T&G Oak, Lining 1/4" Plywood
13. Coupler Uncoupling Device	"Standard" S.R.E.M.Co.	28. Brakes - Vacuum 16-1/2" x 6" Tires 900/20 - 10 Ply
<b>BRAKE</b> - Schedule	Wabco AB 10 x 12	29. Lights - ICC
14. Brake Power	41,300 lbs. - 63%	30. Bumper - ICC - and Mud Flaps 24" x 30", R.R. Tie Downs
15. Hand Brake	Multi-Power Drop Shaft Universal	31. Jacks 1-36"-46", 1-28"-37 1/2" No. 9318 TEMPLETON, KENLY & Co.