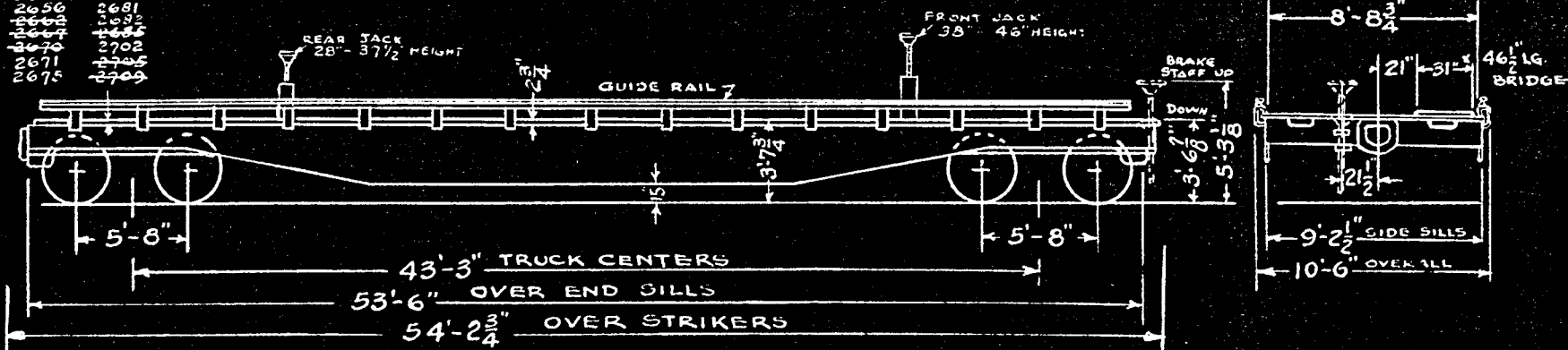


BUILT JULY 1951 GREENVILLE STEEL CAR CO. ORDER NO. 00.562 (2601-2640)  
 BUILT FEB. MAR. 1953 " " " " " " 00.584 (2641-2710)  
 CONVERTED TO PIGGYBACK SERVICE NOV. DEC. 1954, APR., OCT. 1955

11 Piggyback Cars in Series 2601-2710  
 Class FC

**PIGGYBACK CARS**

2607	2647	2679
2608	2656	2681
2614	2652	2682
2619	2677	2685
2626	2670	2702
2642	2671	2705
2646	2675	2709



**GENERAL**

1. Capacity - Nominal 140,000 lbs.
2. Load Limit 144,300 lbs.
3. Light Weight 65,700 lbs.
4. Maximum Load on Rails 210,000 lbs.

**BODY**

5. Underframes - Steel Fishbelly Center and Side Sills
6. Floor 2-5/4" Square Edged Untreated Mixed Oak
7. Stake Pockets Each End 2
8. Hinged Bridges at Diagonal Corners - Diamond Tread Steel
9. Side Guard Rails 50 ft. 90# Rail

**DRAFT**

10. Draft Gear National Malleable M-17A, Card.-West. NY-11-F
11. Draft Keys - A.A.R. Retainer Lock I.R.E.Co.
12. Draft Yoke A.A.R. Vertical Plane
13. Coupler A.A.R. Type "E", 6-1/4" x 8" Bottom Operated
14. Coupler Uncoupling Device Standard "Safety" S.R.E.M.Co.
15. Coupler Centering Device with Coupler Ht. Adj. None

**BRAKES**

16. Brake Schedule Wabco AB 10" x 12"
17. Brake Power 41,300 lbs. - 63%
18. Hand Brake Multi-Power Drop Shaft Universal

**TRUCKS**

19. Frames C.S., Integral Box, Modified for Timken Bearings
20. Snubbers Bolster Friction Block
21. Brake Hanger Suspension "Mobile" I.R.E.Co.
22. Brake Hangers - Flannery, Brake Beam No. 16 Creco.
23. Brake Beam Support and Safety Device Creco 4 Point
24. Side Bearings - Stucki, Brake Regulator M.S. O'Boyle
25. Roller Bearings 6" x 11" Timken
26. Axles 6" x 11" A.A.R. Wheels 1-Wear Wrot Steel 33"
27. Bearing Lubrication A.A.R. R.B. Grease
28. Train Length Coupled 56'-9"
29. Tie Down Chains 4-Longitudinal 5/8" dia, 4-Longitudinal 1/2" dia Steel
30. Wheel Chocks 4 per Car
31. Jacks, 1 - 38"-46", 1 - 28"-37 1/2" No.9318 Templeton, Karyl & B.