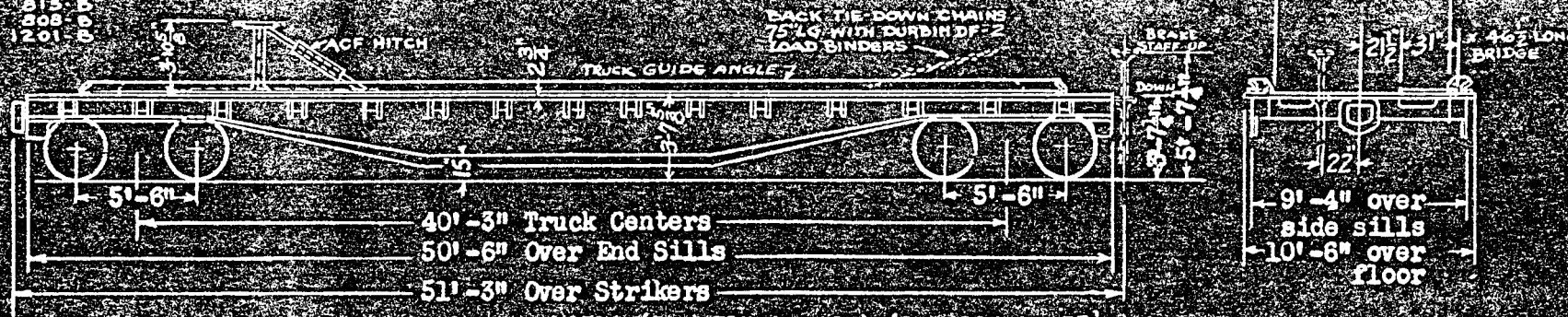


Built Jun 1956 Greenville Steel Car Co. Order No. 00-672
 Converted to Piggyback Cars Jan., May, June, Sept. 1957, Co. Shops

12 Piggyback Cars in Series 2401-2412
 Class FC

CARS NOS - HITCH NOS	
2401	1200-B
2402	812-B
2403	212-B
2404	213
2405	809-B
2406	813-B
2407	807-B
2408	816-B
2409	815-B
2410	808-B
2411	1201-B



Car No. 2464, Templeton, Kenly & Co. Jacks, No. 9518 (1 - 38" to 46") (1 - 28" to 37 1/2")

GENERAL		BRAKE	
1. Capacity - Nominal	100,000 lbs.	16. Brake Schedule	Wabco AB 10" x 12"
2. Load Limit	112,300 lbs.	17. Brake Power	32,516 lbs. - 57%
3. Light Weight	56,700 lbs.	18. Hand Brake	Multi-power Drop Shaft Universal
4. Maximum Load on Rails	169,000 lbs.	TRUCKS	
BODY		19. Frame Cast Steel - Integral Box Modified for Timken Bearings	
5. Underframe Steel	Fishbelly Center and Side Sills	20. Snubbers	Barber, SP-20-B, 2 1/2" Travel
6. Floor	2-3/4" Square Edge, Untreated Mixed Oak	21. Brake Hanger Suspension	"Mobile" I.R.E. Co.
7. Stake Pockets	Each Side 15, Each End 2	22. Brake Beam Hangers - Schaefer, Brake Beam No. 18	Creco
8. Hinged Bridges at diagonal corners	Diamond Tread Steel	23. Brake Beam Support & Safety Device	Creco 4-Point
9. Side Guard Rails	1/2" x 4" x 8"	24. Side Bearings - Stucki, Brake Regulator - M. S. O'Boyle	
DRAFT		25. Roller Bearings	5 1/2" x 10" Timken
10. Draft Gears	Miner RF-333	26. Axles 5 1/2" x 10" A.A.R.	Wheels MW 33"
11. Draft Keys	A.A.R. Retainer Lock I.R.E.Co.	27. Bearing Lubrication	A.A.R. - RB Grease
12. Draft Yoke	A.A.R. Vertical Plane	28. Train Length Coupled	53'-9"
13. Coupler AAR Type "E", 6 1/2" x 8", Articulated Bot. Operated		29. Trailer Hitch (Front)	A.C.F. Hitch
14. Coupler Uncoupling Device	"Standard" SREM Co.	30. Back Tiedowns - Latitudinal	3/8" dia. Chains
15. Coupler Centering Device with Coupler Ht. Adj. SREM Co.		31. Jacks or Wheel Chocks	None