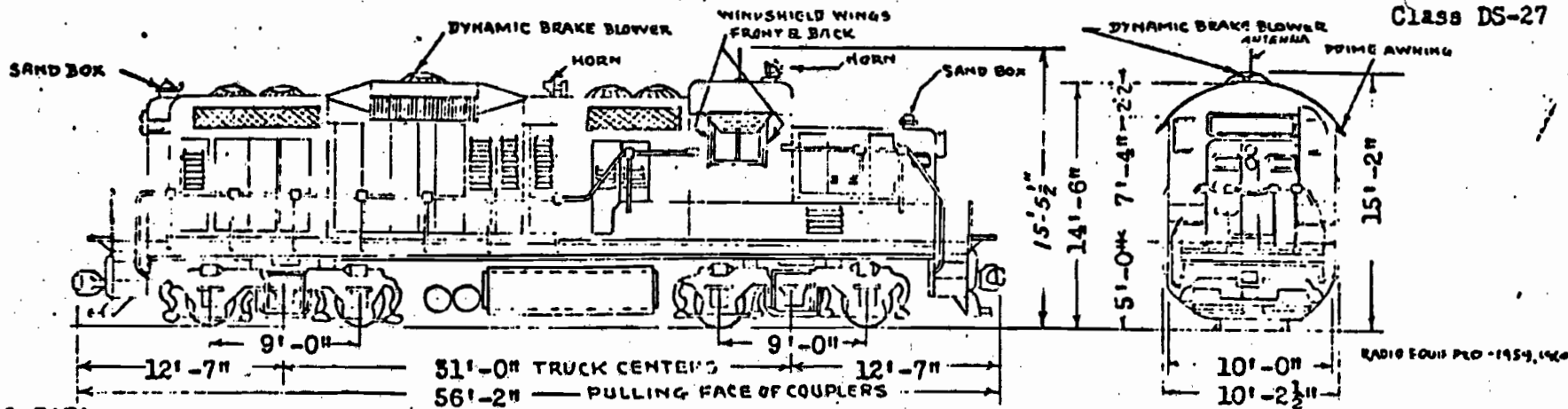


BUILT BY ELECTRO-MOTIVE DIVISION
 NO. 39 BUILT APRIL, 1957, BUILDERS NO'S 23270, 23271
 NO. 41 BUILT JUNE, 1957, BUILDERS NO'S 23906-23910, INC.

Diesel Electric Road Switching Locomotives No. 39, 40

41-45

Class DS-27



GENERAL DATA J-18 RELAY VALVE.

1. Weight - Working Order	249,000 lbs.	CAPACITY	
2. Horse Power	1750	28. Fuel Oil	1700 Gals. Lubricating Oil 200 Gals.
3. Ratio of Gears	62-15	29. Cooling Water	230 Gals. SAND 18 cu.ft.
4. Maximum Speed (Over-speed setting)	65 M.P.H.	MISCELLANEOUS	
ENGINE		30. Sanders One Line Duplex, 8 Traps, Elect. Pneumatic Prime	
5. Type	Two Cycle Vee Type No. 567-C General Motors	31. Horns - Leslie S-5T Pneumatic, Cab Heater - 2 Hot Water	
6. Cylinders - Bore and Stroke	16 - 8 1/2" x 10"	32. Bell Ringer-Prime BR-106, Filters-Engine Air 4-Oil Bath Air Maze	
7. Speed - Idling 275 R.P.M. At Rated H.P. 835 R.P.M.		33. Window Wiper-Sprague Air Push, Flange Lub. Walco. #3940 Only	
8. Governor	Woodward PG Electro Hydraulic	34. Speed Recorder	Barco DPC 0-75 M.P.H.
ELECTRICAL E.I. Transition		35. Fire Ext. 2 1/2" Ansul in cab, 2-30# Ansul (1-Cab, 1-Blr. Rm)	
9. 1 - EMD Main Generator Model D12B, 600V, 2200 Amp. Cont. DC		36. Draft Gear	National Malleable M-280
10. 1 - EMD Aux. Gen. Model A-7159A-1, 10KW, 80V, 125 Amps.		37. Couplers-Front & Back, self-alignment, Top Opr. Type "E" BRAKE EQUIPMENT-Flat Maintaining and Emergency Brake Valve	
11. 1 - EMD Alternator Model D-14, 100 KW, 165 Volts, 3 HP AC		38. Dynamic Brake	700 Amps. Maximum E.M.D.
12. 4 - EMD Traction Motors Model D37B, 900 Amps. Cont. DC		39. Dynamic Braking Power	32500 lbs. @ 21 M.P.H.
13. 4 - EMD Trac. Mtrs. Blowers Model I435, 165V, 5HP, 3100RPM AC		40. Air Brake Schedule - DS-24-4C Valve, Westinghouse 24 RL	
14. 1 - EMD Dyn. Brk. Blr. Model A6103, 48", 125V, 18HP, 1300RPM DC		41. Air Brake Power	37,000 lbs. @ 30 lbs. Cyl. Press.
15. Controls MU Right & Left, Front & Back		42. Air Compressor (Water cooled)	Gardner-Denver Type W20
16. Cables MU 27:27, 96" long, Dynamic Brake 5:3.96 long		43. Air Compressor Capacity	235 C.F.M. @ 835 R.P.M.
17. 1 - Fuel Pump Motor Model A-731, 1/4 HP, 74V, 1100RPM DC		44. Air Res. Capy. 2 - 22 1/2" dia. x 102"	74,150 cu. in.
18. 4 - Cooling Fan 36" Motor 3 PH. 165V. 12HP. 1550RPM AC		45. Hand Brake	Peacock No. 800 RE
19. Lighting Circuit - 1/4 V, Battery 32C, 64V, MV-25-D Exide		TRUCKS Cobra Brake Shoes V-144 E.M.D. Type Cast Steel	
20. Headlight Pyle National Twin Scaled Beam 200W, 30-V		46. Type	
TRACTION POWER (cont. 44,500 lbs. @ 12 MPH; 52,400 lbs. @ 9.0 MPH)		47. Axles-Heat. Treat. 6 1/2" x 12" Journals. Hyatt Roller Bearings	
1. Starting @ 25% adhesion	62,250 lbs.	48. Wheels	40" M.W. Rolled Steel
22. 15 M.P.H.	35,500 lbs.	49. Brake Cylinders 8 - 9" x 8", Side Brgs. - Plain Steel	
23. 20 M.P.H.	27,000 lbs.	LIMITING DIMENSIONS	
24. 25 M.P.H.	21,500 lbs.	50. Maximum Length coupled	56' 2"
25. 35 M.P.H.	16,500 lbs.	51. Maximum Width	10' - 3 1/4"
26. 45 M.P.H.	12,000 lbs.	Maximum Height 15' 2"	
27. 55 M.P.H.	10,000 lbs.	52. Maximum Radius of Curvature	21 Deg.