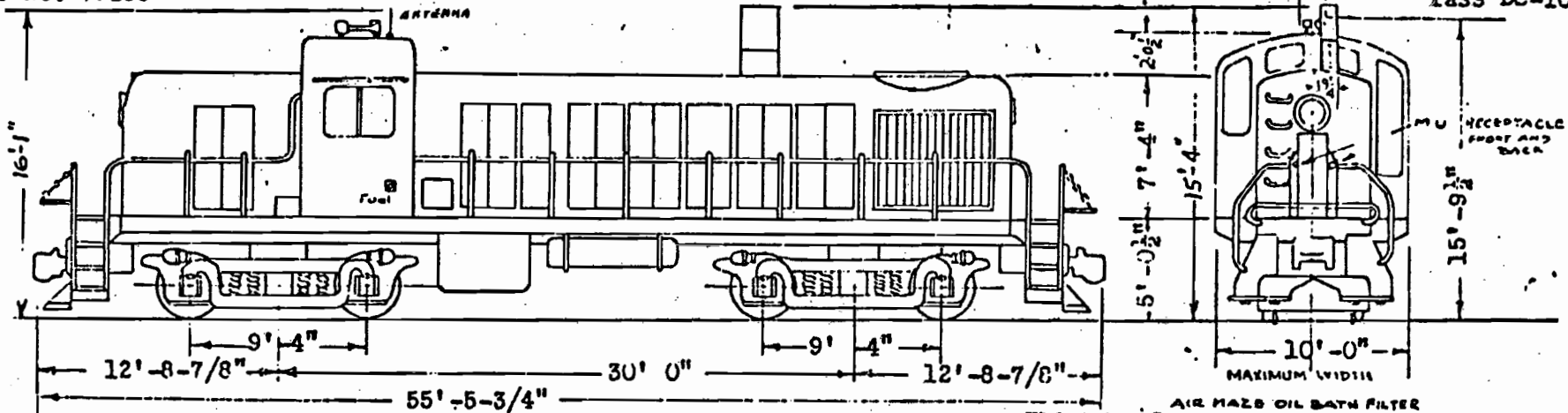


Built by 1947 - American Locomotive Co.
 Builders No. 75258

Diesel Electric Road Switching Locomotive No. 180
 Class DS-10



GENERAL DATA *HYATT ROLLER BEARINGS AUG 1948* J-16 RED VALVE RADIO EQUIPPED - 1960

AIR MADE OIL BATH FILTER
 TRAIN AIR SIGNAL EQUIPMENT... WATER
 MU CONNECTIONS - FRONT AND BACK OF LOCS.

1. Weight - Working Order	249,700 lbs.	CAPACITY	
2. Horsepower	1600	28. Fuel Oil - 800 Gals.	Lubricating Oil 200 Gals.
3. Ratio of Gears	74:18	29. Cooling Water - 250 Gals.	Sand 28 cu.ft.
4. Maximum Speed OVER SPEED SETTING	65 M.P.H.	AIR BRAKE	Flat Maintaining and Emergency Brake Valve
5. Type - 4 Cycle, V Type, Series 244, Turbosuperch'd. Alco		30. Schedule	24-RI, W.A.B.Co.
6. Cylinders - Bore and Stroke	12 - 9" dia. x 10 1/2"	31. Brake Power @ 3) lbs. cylinder pressure	103,500 lbs.
7. Speed - Idling 350 R.P.M., At Rated H.P. 1000 R.P.M.		32. Air Compressor	Westinghouse 3-CDE
8. Turbosupercharger	Model G.E. 510B1	33. Air Compressor Capacity at Full Engine Speed	306 CFM
9. Governor	G.E. Type 17MG3C9 Electro Hydraulic	34. Reservoir Capacity	60740 cu.in.
10. 1 - G.E. Main Generator Type GT-564 Cont. Rat. 2170 Amps		35. Feed Valve - D-24-B	Relayair Valve HA-24-C
11. 1 - G.E. Aux. Generator Type 5-GY-24-A1, 12 KW, 75 Volts DC		36. Dead Man Control Foot Pedal Breakintwo Protection	Wabco
12. 1 - G.E. Exciter Type 5-AM-807-A2 9KW, 100V, 2400RPM.		37. Handbrake	Ajar
13. 4 - G.E. Tract. Motors Type 5GE-752-A1, 1085 Amps. Cont. DC		MISCELLANEOUS	
14. 1 - G.E. Radiator Fan - Arhonic Type		38. Fire Extinguishers 2 1/2" Ansul in Cab, 2- 30 lbs. Ansul	
15. 1 - G.E. Fuel Pump Type 5RC76AB-286, 1 HP, 75 Volts DC		39. Sanders	8-Graham White
16. Control Equipment GE Type P, Overspeed with Time Delay		40. Horns 2 Leslie Typhon Class IP Bell Ringer Prime ER-106	
17. Multiple Control Front & Back, Cable 60-Inch Length, 27 Wire		41. Speed Recorder	TYPE DP, 0 to 60 M.P.H. BARCO
18. Battery	32 Cells, 64 Volt, C&D. CXSD-25	42. Draft Gear	Type M-17-A National
19. Lighting Circuit	75 Volts	43. Coupler	Top Operated - AAR Type E
20. Headlight 2-14" dia. 32 Volts, 250 Watts, Pyle National		TRUCKS	V-110 Cobra Brake Shoes
TRACTIVE POWER		44. Type	4-wheel Swivel, Swing Motion, Pedestal Type
Starting at 25% Adhesion	62,425 lbs.	45. Axles	6 1/2" x 12" Journals, Hyatt Roller Bearings
22. 10 M.P.H.	49,000 lbs.	46. Wheels	4 Pairs - Rolled Steel - 40" dia.
23. 15 M.P.H.	33,500 lbs.	47. Brake Cylinders	8 - 10" dia. x 8" W.A.B.Co.
24. 20 M.P.H.	25,000 lbs.	48. Side Bearings	Plain Steel - Hardened
25. 25 M.P.H.	20,000 lbs.	LIMITING DIMENSIONS	
26. 30 M.P.H.	16,500 lbs.	49. Maximum Length Coupled	55' - 5-3/4"
27. Continuous Rating	52,500 lbs. @ 8.0 M.P.H.	50. Maximum Width	10' - 0"
		51. Maximum Height	15' - 9 1/2"
		52. Maximum Degree of Curvature	1:100