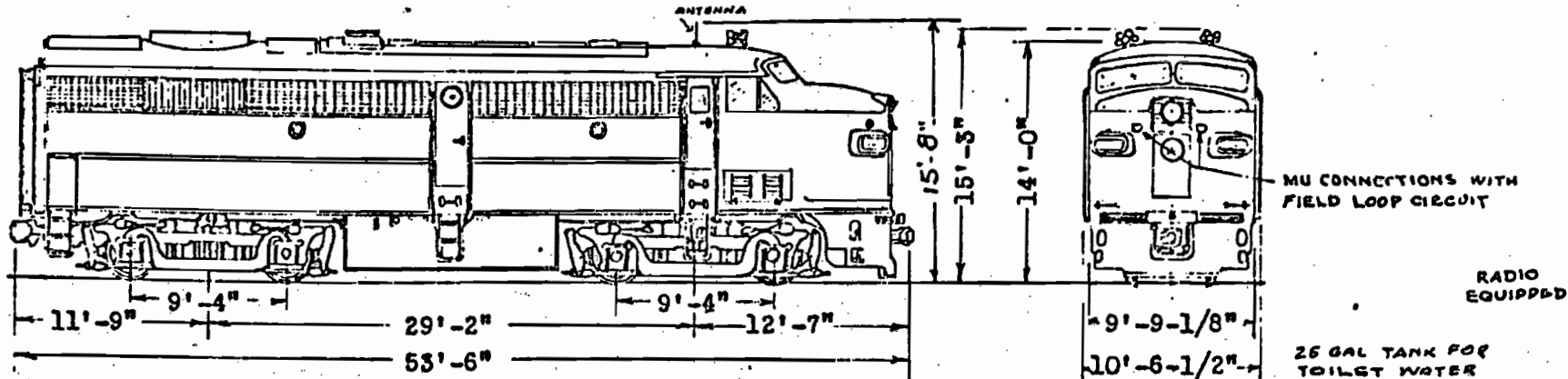


Built January, 1951 - American Locomotive Co.  
 Builder's Nos. 78494, 78495, 78606, 78607

Diesel Electric Road Locomotives Nos. 302, 303, 304  
 Class DF-19



**GENERAL DATA** BATTERIES - C & D TYPE 6A5D-25, 301, 303. AUTO. REG. DYNAMIC BRAKING - 800 AMPS, 40500 LBS., @ 19 MPH. J-16 RED VALVE AIR FRIEZE OIL BATH FILTER  
 MU CONNECTIONS - FRONT AND BACK OF LOCOMOTIVES

1. Weight - Working Order	248,200 lbs.	<b>CAPACITY</b>	
2. Horsepower	1600	28. Fuel Oil - 1200 Gallons	Lubricating Oil 200 Gals.
3. Ratio of Gears	74-18	29. Cooling Water - 250 Gallons	Sand - 22 Cu. Ft.
4. Maximum Speed (Over-Speed Setting)	65 M.P.H.	BRAKE EQUIPMENT Flat Maintaining and Emergency brake valve	
<b>ENGINE</b>		30. Schedule	24RL W.A.B.Co.
5. Type-4 Cycle, V Type, Ser. 244-D, Turbo Supercharged Alco		31. Brake Power - Dyn. 2000 BHP @ 23 MPH	Air 106,800 # @ 30# Cyl. Pres
6. Cylinders - Bore and Stroke	12 - 9" dia. x 10 1/2"	32. Air Compressor - Westinghouse 3-CDC, Governor W/B Co. S-16	
7. Speed - Idling 350 R.P.M. At rated H.P. 1000 R.P.M.		33. Air Compressor Capacity at full engine speed	246 C.F.M.
8. Turbo Supercharger (303, 304 - 510) 301, 302 G.E. Model	RD3C3	34. Reservoir Capy. 3-18 1/2" x 72" @ 17,900 cu. in.	53,700 cu. in.
9. Governor	G.E. Type 17 MG6D2 Electro Hydraulic	35. Feed Valve D-24	Relay Air Valve HA-24-C
<b>ELECTRICAL</b>		36. Deadman Control - Foot Pedal, Break into two Protection Web	
10. 1 - GE Main Gen. Type 5GT581-A1, Cont. Rat. 2170 Amps.		37. Handbrake	Type 1040-S Proco
11. 2 - GE Auxiliary Generator 5GY27A3 1 1/2 KW, 75 Volts DC		<b>MISCELLANEOUS</b>	
12. 1 - GE Exciter Type 5AM308A3 9 KW, 100 Volts, 2400 RPM.		38. Fire Extinguishers 2 3/4" Ansul	in Cab, 2-30 lb. Ansul
13. 4 - GE Traction Motors Type 5GE-752-C1, 1085 Amp. Con. DC		39. Sanders	8 - G.S.-256 Graham White (Prime)
14. 2 - GE Traction Motor Blower 5GY29C1, 140V, 75 KW, 3600 RPM DC - 1 Red Fan Aphonio		40. Whistles - 2 Nathan M5 Modulated, Bell Ringer Viloco BR-83	
15. 1 - GE Fuel Pump Type 5BC76AB-286, 1 HP, 75 Volts DC		41. Speed Recorder - Barco Model DP	0-75 H.P.H.
16. Control Equip. - GE Type P, Oversped with Time Delay		42. Draft Gear	National Malleable Type M-380
17. Multiple Control Cable	55" Length, 27 Wires	43. Coupler - Front AAR Type "E", Back AAR Tightlock Type "H"	
18. Batteries	32 Cells, 64 Volts, Exide MV-25-D	<b>TRUCKS</b>	
19. Lighting Circuit	75 Volts	44. Type	G.S.C. 4-Wheel, Swivel, Swing Motion Pedestal Type
20. Headlight F-Twin Sealed Beam, B-Single Beam, 200 W, 30 Volt, Pyle National		45. Axles	6 1/2" x 12" Journal for Hyatt Roller Bearings
<b>TRACTIVE POWER</b>		46. Wheels	40" Dia. M.W. Rolled Steel
21. Starting at 25% adhesion	62,050 lbs.	47. Brake Cylinders	8 - 10" x 8" W.A.B.Co.
22. 10 M.P.H.	49,000 lbs.	48. Side Bearings	Plain Steel, Hardened
23. 15 M.P.H.	33,500 lbs.	<b>LIMITING DIMENSIONS</b>	
24. 20 M.P.H.	25,000 lbs.	49. Maximum length coupled	53' 6"
25. 25 M.P.H.	20,000 lbs.	50. Maximum Width	10' 6 1/2"
26. 30 M.P.H.	16,500 lbs.	51. Maximum Height	15' 8"