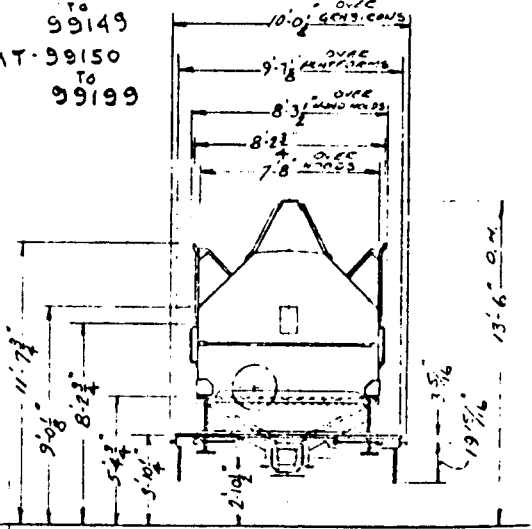
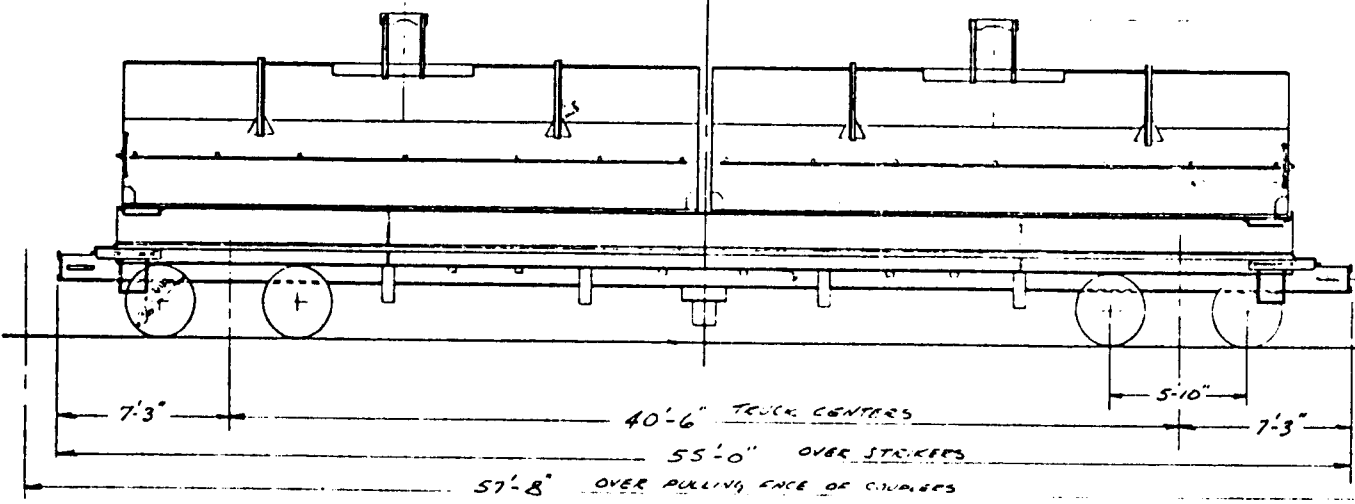


PLAN VIEW SHOWS HOODS REMOVED.

READING COMPANY  
OFFICE C.M.O. READING, PA  
(AAR) GBSR CLASS ~~FMB~~ - 100 TON  
GONDOLA FLAT CAR - SPECIALLY  
EQUIPPED WITH HOODS  
FOR COIL STEEL LOADING  
RANGING IN DIAMETERS  
FROM 30" TO 84"  
SERIES - 9125-9149

ROG. Co.  
CLASS  
GMS-99125  
TO  
99149  
GMT-99150  
TO  
99199



BUILDER - EVANS PRODUCTS CO.	SUPERSTRUCTURE - BUILT UP STEEL	HOOD HOULTIC - BUILT UP STEEL	TRUCK BOLSTER - BIRMINGHAM STEEL	RUNNING COARDS & END B. STEEL - 3" X 1/2"
BUILT - MARCH 1968	UNDERFRAME - BUILT UP STEEL	HOODS - 2 1/2" X 1/2" (2 HOODS)	ORIGINAL COILER BEARING	STABILIZING DEVICE (TYPE 5)
LT. WEIGHT - 63,100 LBS.	CENTER SILL - 10" I-BEAM	CUSHION UNDERFRAME - 2" X 1/2"	TOUGH FLOORING - 1/2" X 1/2"	TRUCK SIDE BEARING - STUCK
CAPACITY - 200,000 LBS.	SIDE SILLS - 10" I-BEAM	COUPLERS - 2" X 1/2"	BEAR BEAMS - WEST WAREHOUSE	DRAFT GEAR - WILSON EQUIP. CO.
LENGTH INSIDE - 48'-0"	INTERMEDIATE SILLS - NONE	AIR BEARINGS - WASCOPAC BONE UNIT	TRUCK SPRINGS - D-3-2 1/2" TRUCK	COUPLER YOKES - BY - 40"
WIDTH INSIDE - 6'-1"	TRUCKING PADS - 1/2" X 1/2"	BEARER BOLTS - 1/2" X 1/2"	DRAFT KEY RETAINER FLOCKS - 1/2" X 1/2"	UNCOUPLING DEVICE - 5" X 1/2"
OVERALL HEIGHT - 13'-6"	TRUCK DESIGN - BR 300 S-2-A	RAILROADS - 4" X 1/2"	CHEEK BOLT NLS. - BICOR (GARDNER)	WHEELS / AXLES - 36" DIA. / 1 1/2"
MIN. RAD. CURVE - 150'	END SILLS - 9" X 6" X 1/2"	TRUCK WHEELS - 19" X 2 1/2"	CROSS MEMBERS - 6" X 2" X 1/2"	BRAKE CYLINDERS - 8 1/2" DIA.