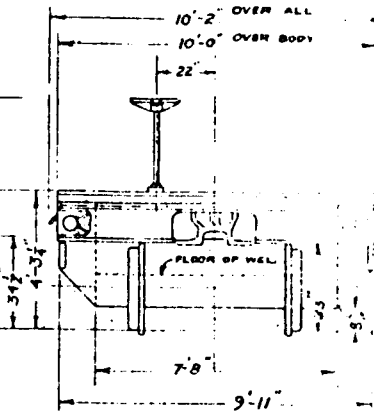
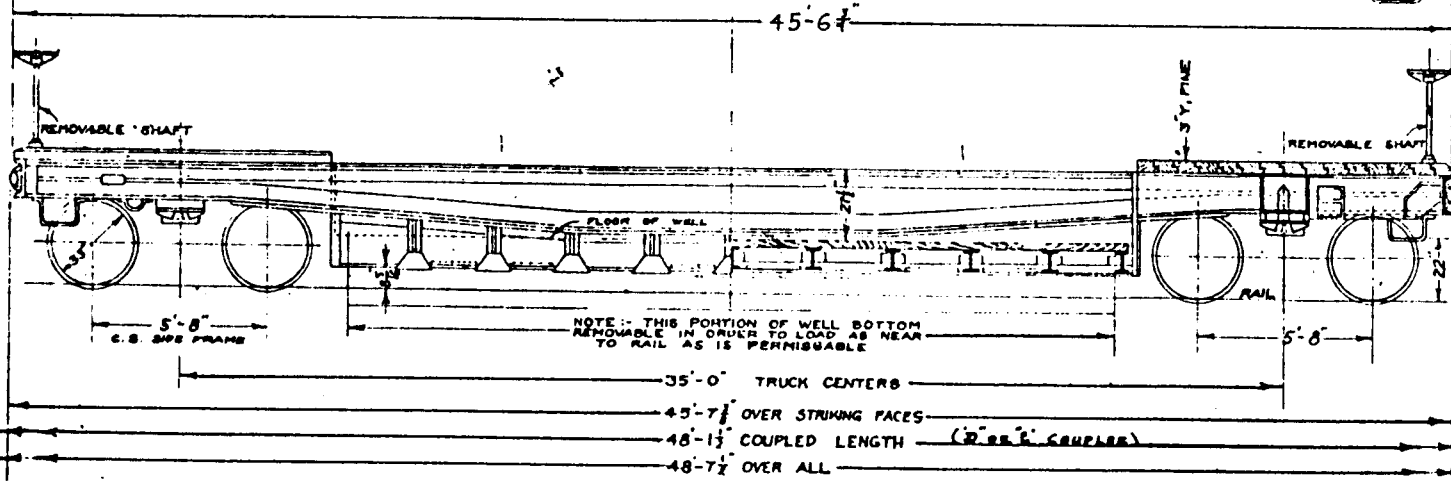
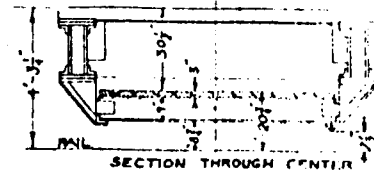
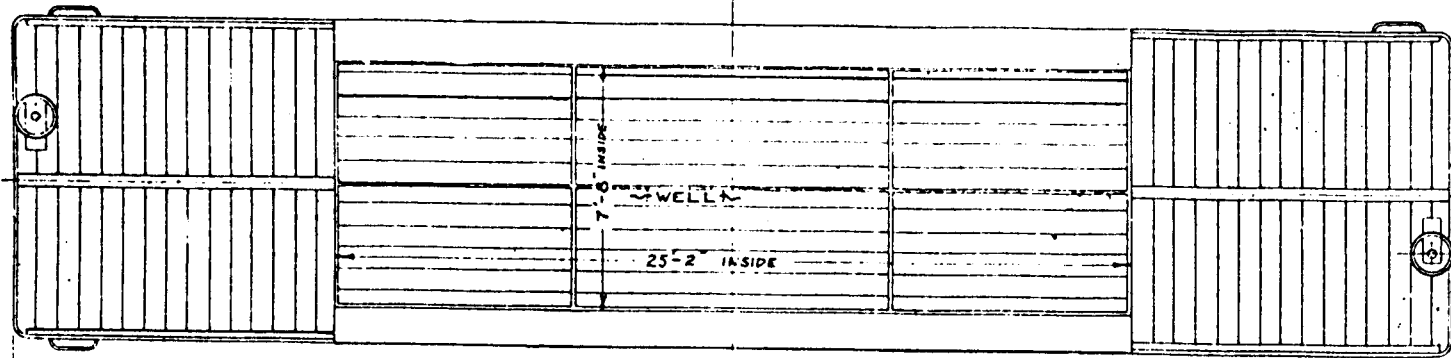


CONCENTRATED LOAD ON FLOOR I BEAMS MUST NOT EXCEED 12,000 LBS. PER BEAM LOADED AT CENTER OF BEAM

WELL CAR  
135,000 LBS CAPACITY  
CLASS FWA



|                  |                      |                      |
|------------------|----------------------|----------------------|
| SERIES -         | 99,000 TO 99,004     | 99,006 TO 99,012     |
| BUILDER          | P & R. RWY CO        | READING COMPANY      |
| BUILT            | READING SHOPS - 1913 | READING SHOPS - 1924 |
| LIGHT WEIGHT     | 72,800 LBS.          | 71,000 LBS.          |
| CAPACITY         | 135,000 LBS.         | 135,000 LBS.         |
| SIZE OF JOURNALS | 6" X 11"             | 6" X 11"             |
| TRUCK            | BIRDSBORO CAST STEEL | BIRDSBORO CAST STEEL |
| WHEEL            | 33" WRT. STEEL       | 33" WRT. STEEL       |
| DRAFT GEAR       | MINER A-18           | MINER A-18-S         |

W.L.H. JR. 2-17-49 - REV. 5-23-61 INT. BOTTOM OF SIDE SILL WAS 8 3/8" ABOVE R.L.