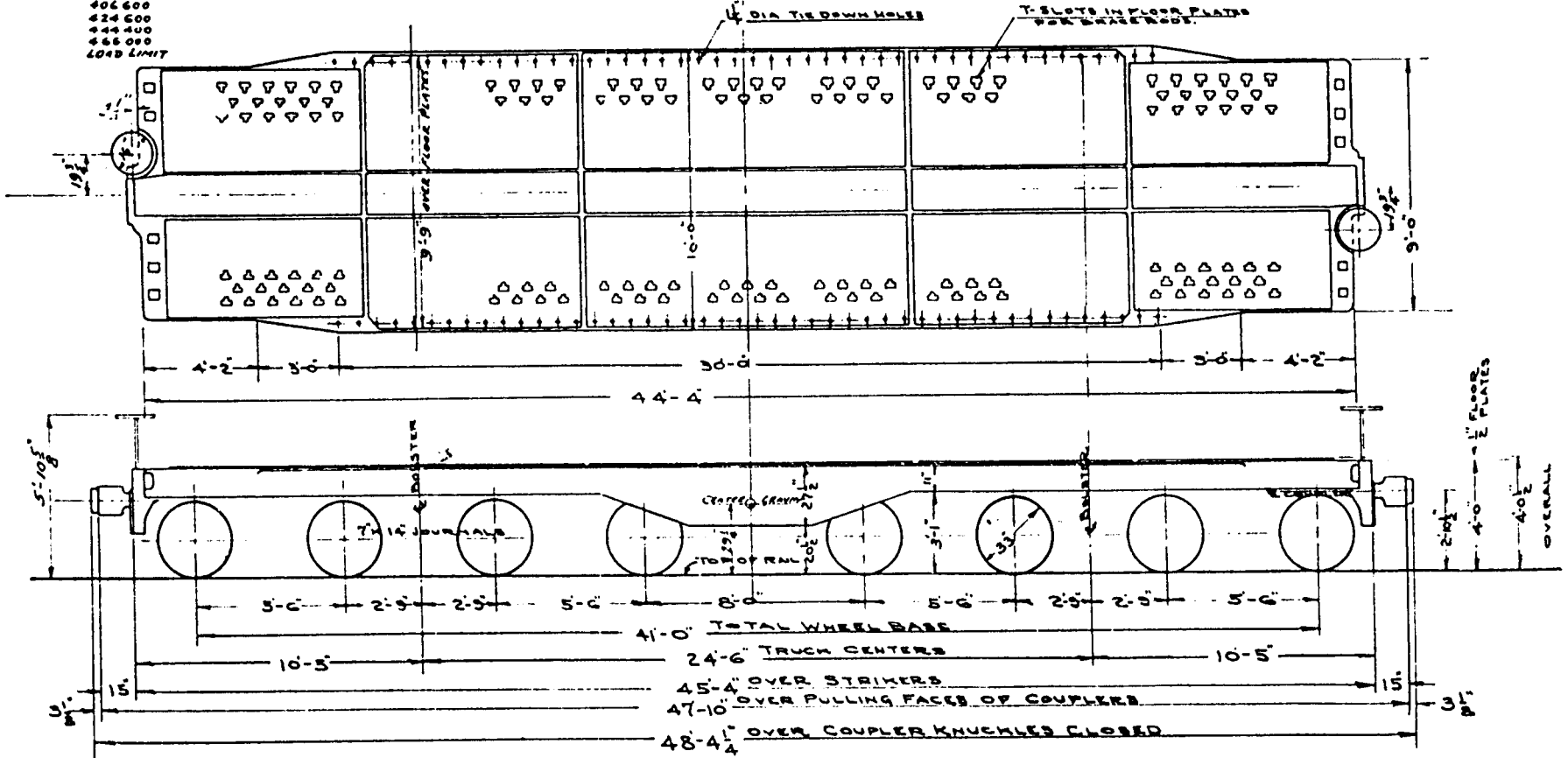


**FLAT CAR
HIGH CAPACITY
CLASS-FMH SERIES-9100**

PERMISSIBLE LOADING

LENGTH OF LADING	LOAD
0	330000 LBS.
21'-0"	406600
41'-0"	424600
61'-0"	444400
81'-0"	466000
101'-0"	LOAD LIMIT



C.F.M. (DOL & HUB. EX. 20780)

BUILDER -	RDG. CO. - RPS	OVERALL HEIGHT -	5'-10 1/2"	COUPLERS -	E-CVA - 8 RIGID	FRICTION TRK. SPRG. -	CARRIED OVER	UNION CENTERING DEVICE
BUILT -	APRIL 30, 1933	UNDERFRAME -	CAST STEEL	HANDBRAKE -	UNIVERSAL MULTI-PART	MIN. RADIUS CURVE -	220 FT.	
WT WEIGHT -	EST. 107,000 ⁰⁰ LBS.	CENTER SILLS -	" "	TRUCK SIDE FRAM. -	BUCKET - C.S.	WHEELS -	AAR-G-83 MULTI-WEAR	
CAPACITY -	490,000 ⁰⁰	SIDE SILLS -	" "	TRUCK BOLSTER -	BUSHY - S.B.	SLASH ADJUSTER -	WEST C-26-C	
LOAD LIMIT -	490,000 ⁰⁰	END SILLS -	" "	JOURNALS -	T-1/4"	UNCOUPLING DEVICE -	CAMP WHEEL BRG.	
LENGTH OF FLOOR -	44'-4"	BODY BOLSTER -	" "	AIR BRAKES -	WAB-2-AD	BRAKE CYL. -	2-VAHT 12X10	
WIDTH OF FLOOR -	10'-0"	DRAFT GEAR -	WEST NY-11-7	BRAKE BEARS -	POSITIVE - 1/8"	PISTON TRAVEL -	5"	

ACTUAL WEIGHT - 106,600 - 4-10-33
 WT. OF ONE TRUCK - 190,400⁰⁰
 CG. OF GRAVITY - 83 1/2% C.S. FORM
 "LOW" TABLES 11-11-32

READING COMPANY
 OFFICE - SUPT. M.P. & R.E.
 READING, PA. JUNE 26, 1932