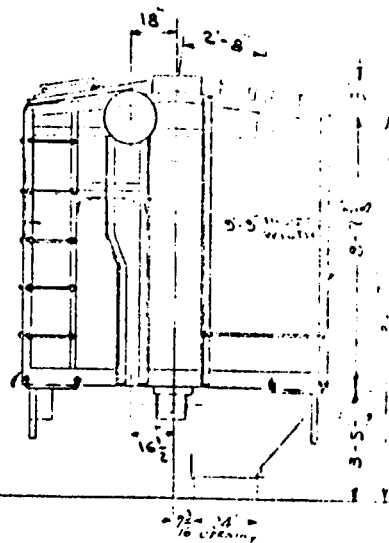
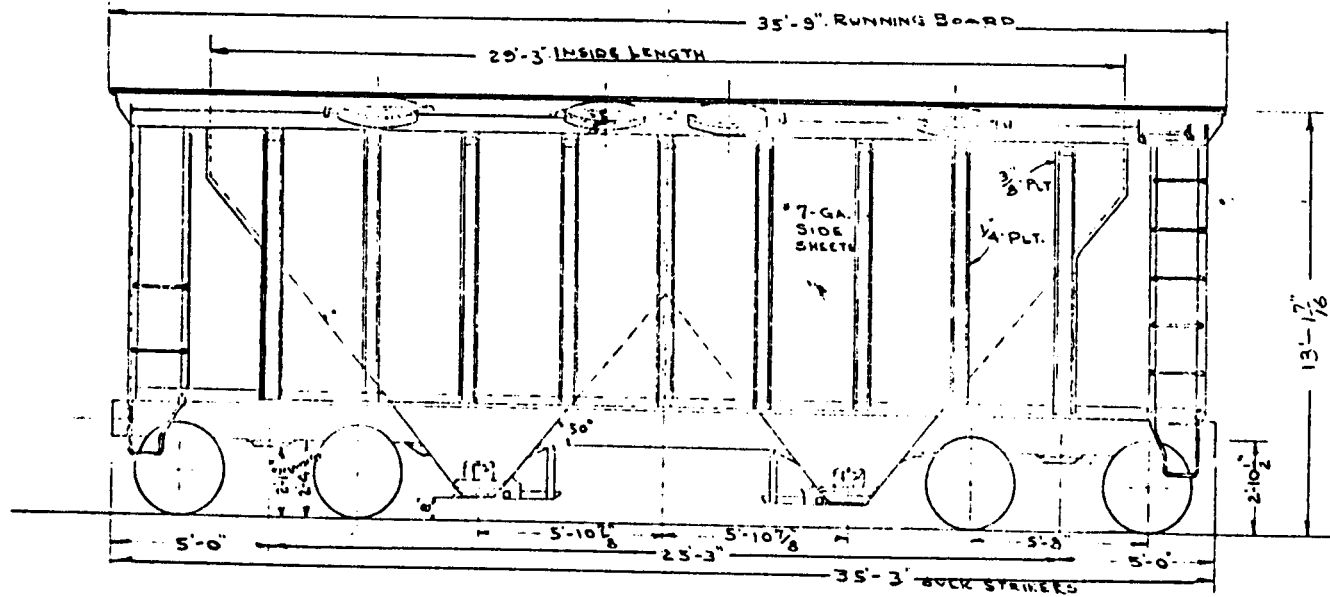
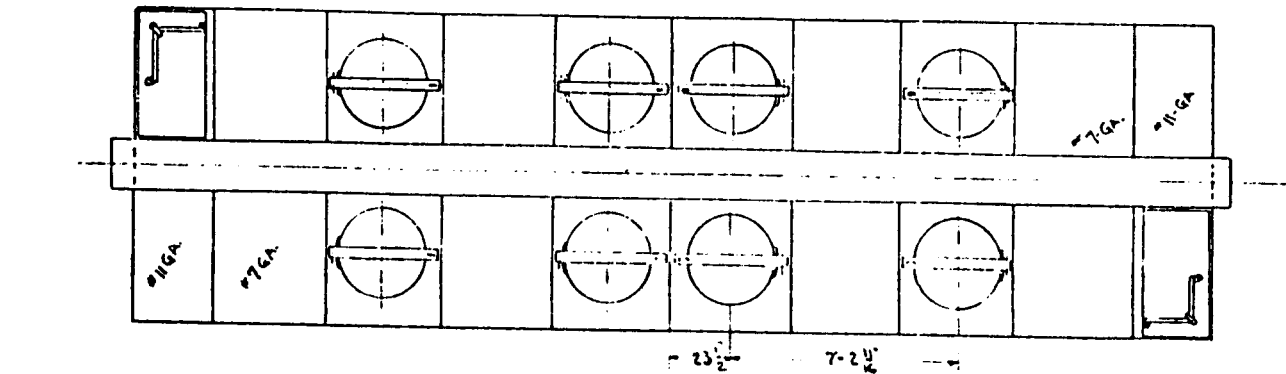


READING COMPANY
OFFICE SUPT. IN CHARGE
READING PA. JULY 2, 1957

70-TON COVERED HOPPER
CLASS LOG

SERIES- 79800 TO 79899



BUILDER - ACE INDUSTRIES INC	UNDERFRAME - STRUCT. STEEL	ROOF - 1/2" PLT SHEET 30X30	RUNNING BOARD - APX	UNCOUPLING DEVICE - ACE DESIGN PAT.	ROLLER BRG. (HATS) 79800 TO 79849
BUILT - BERWICK PA. 1957	CENTER SILLS - AAR 2" SILEM	RAILINGS - 2" SILEM 2" DIA. W/ 1" DIA. RING	AIR HOOKS - WEST. AB-1012	VIBRATOR CASTING - TYLER	PLAIN TIE RAILS 79850 TO 79899
EMPTY WEIGHT - 42,300 LBS.	SIDE SILLS - 3" x 3 1/2" x 2" L	DRIVE GEAR - 1" DIA. 11	FRAM. FRAME (AJAX) 79800 TO 79849	TRUCK (W/DRUM) - BAKER 3-2-A	BRAKE HOLES DIA. 1" DIA. 1" DIA.
CAPACITY - 2000 CUFT. (4000 LBS)	INTERMEDIATE SILLS - NONE	COUPLER - E-60 - ARTIC. EOTT. C/	CHAMPION TRUCK 79850 TO 79899	79800 TO 79835 (SPRING PLANS)	BRAKE CEMM VIBR. PAT. 1957
LENGTH INSIDE - 29'-3"	END SILLS - 6" x 3 1/2" x 1/2"	OUTLET DOORS (CENTRAL)	BRAKE REGULATOR - CHOLEY - M.S.	UNIT - M/10 TO 22-11	AXLE SIBS - 6" x 11"
WIDTH INSIDE - 9'-9"	BODY BOLTER - BUILT UP STEEL	79800 TO 79849 (LUBRICATING TAP 1/2" DIA)	DRIFT HEAD - MINER - A-22-XL	AXLE SIBS - 6" x 11"	WHEELS - 33" I.W. STL.
HEIGHT - SIDE SILL TO 220 PAT. 0-7 1/2"	SUPERSTRUCTURE - STEEL	LOADING HATCHES - 30" DIA.	" YOKE - AAR-Y-40 - CAST STL		