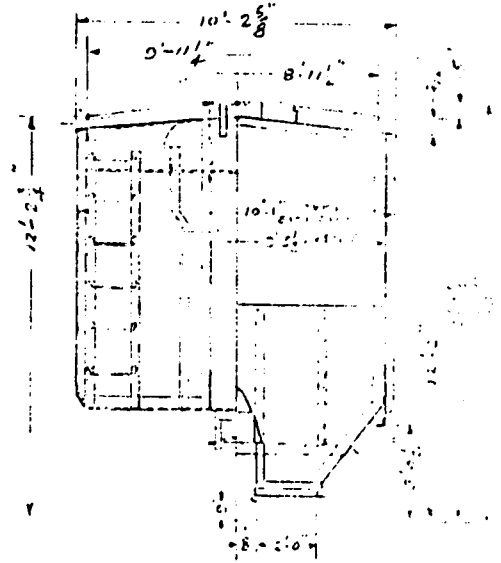
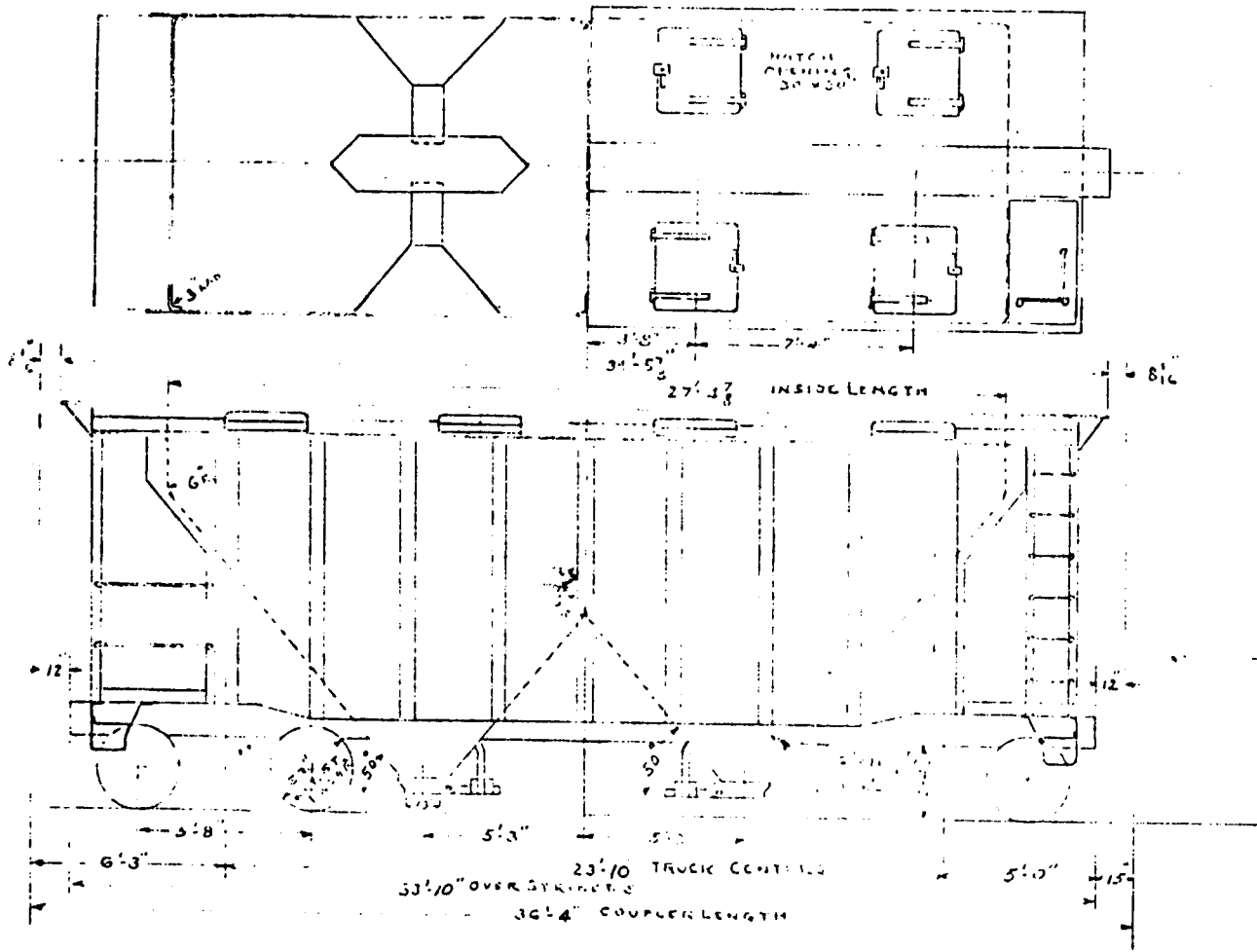


READING COMPANY
 OFFICE SUPT. M. PA. 1
 READING, PA. SERIES 15 111

70-TON
 CEMENT HOPPER CAR
 CLASS LOF
 SERIES 79550 TO 79649



WELDER BETHLEHEM STEEL CO
 BUILT JOHNSTOWN, PA 1953
 WEIGHT 51300 LBS
 CAPACITY 140000 LBS 1800 CU. FT
 INSIDE LENGTH 27' 3 7/8
 WIDTH 9' 1 1/2
 CARBON STEEL 415

UNDER FRAME - STEEL
 END SILL - AFR. Z SECTION 4x4x1/4
 SIDE SILL - 3\"/>

ROOF - STEEL DECK
 DRAWING - 3\"/>

REV. 9-20-51 - INCREASED THROUGH CLEARANCE
 TRUCK SIDE FRAME
 HOPPER
 JOURNALS
 AIR BRAKE
 HOPPER SILL
 HOOPER SILL
 STEEL DECK