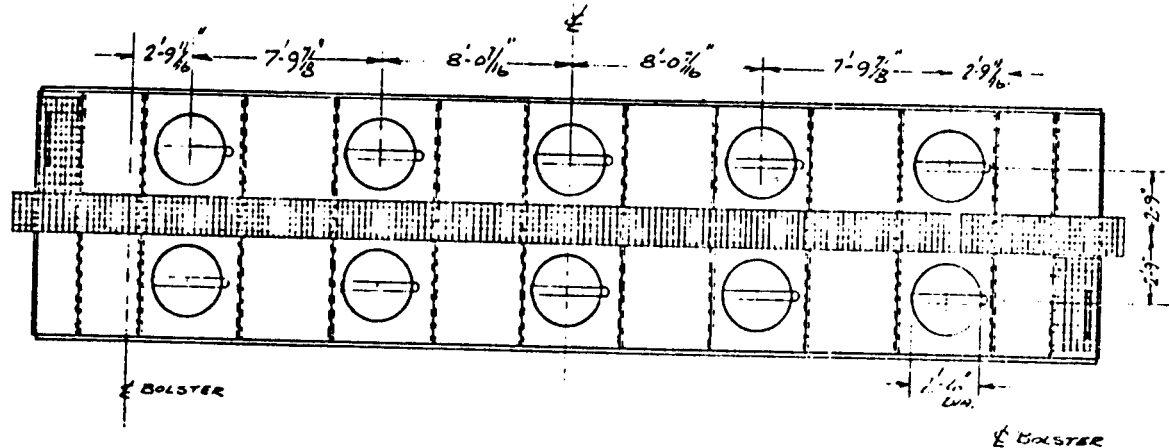


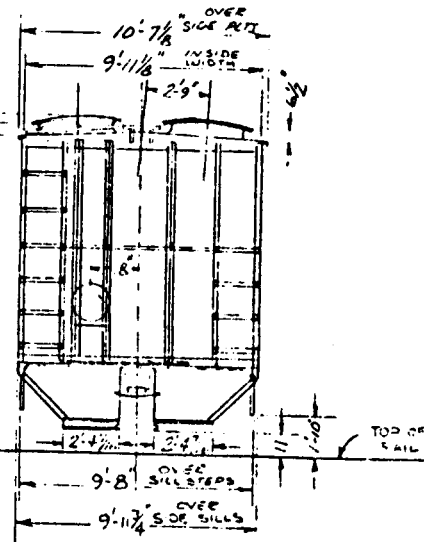
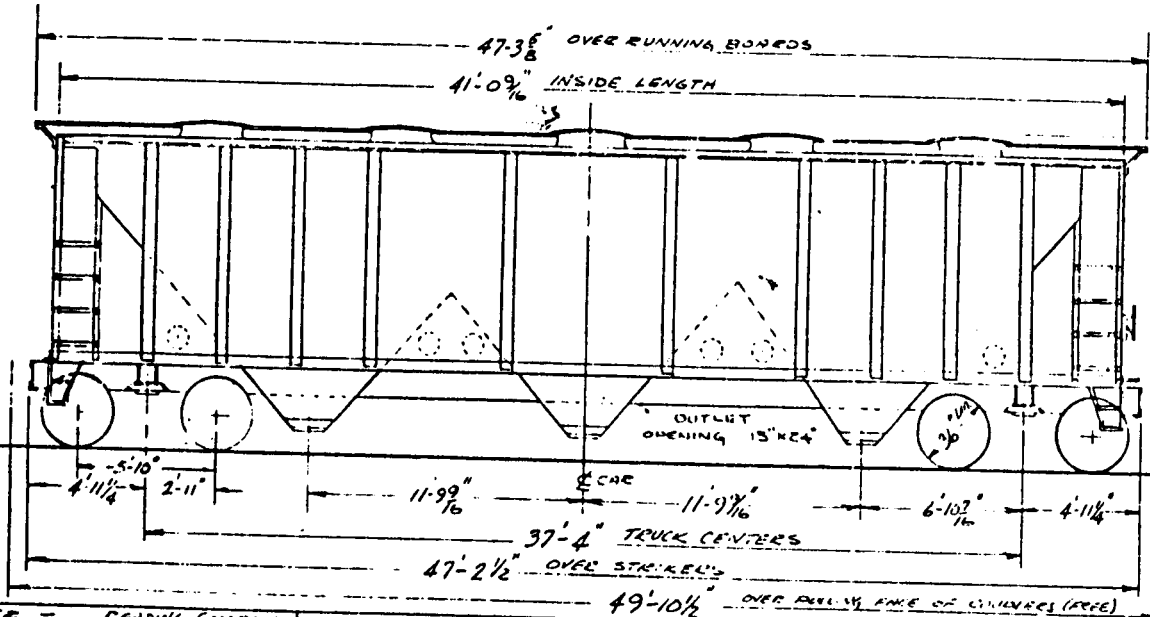
READING COMPANY  
 OFFICE C.M.O. READING, PA.  
 CLASS LON  
 SERIES - 78900-78999  
 100 TON COVERED HOPPER

3500 CUBIC CAPACITY



← CAR

← BOLSTER



BUILDER - READING COMPANY	OVERALL HEIGHT - 13'-11"	EVD SILL - 5" X 3 1/2" X 3" L	AIR FRIE GATE - ASPSTONE RUSTLOC
BUILT - JUNE 1968	SUPERSTRUCTURE - BUILT-UP STEEL	BODY BOLSTER - 8" X 2 1/2" X 3/16" SHIP	DRIFT SILL - GANDBOARD W/ST STEEL
LT. WEIGHT -	UNDERFRAME - BUILT-UP STEEL	2 SIDP - 3/16" COPPER BRG ST. (30-2) 2" DIA	LIGHT GENE - TRUSS W/ST W/ST
CAPACITY - 3500 CUFT. - 200,000 LB	CENTRAL SILLS - 10" X 3 1/2" X 3/16" L	CHIMNEYS - 5" X 3 1/2" X 3/16" L	COURNER - AIR TIE B-8624-HI-50-TAN
LENGTH INSIDE - 41'-09 1/16"	SIDE SILLS - 6" X 3 1/2" X 3/16" L	EDGE WATCHES - 3/16" COPPER BRG ST	4" X 4" BRG'S - WESTINGHOUSE - 4RD 1/2"
WIDTH INSIDE - 9'-11 1/8"	INTERMEDIATE SILLS - NONE	RUNNING BOARD - 1/2" X 10" X 1/2"	HAIR BOLSTER - EQUINOX. NON-SLIP "4000-1"
			MIN. END CURVE - 1/32"