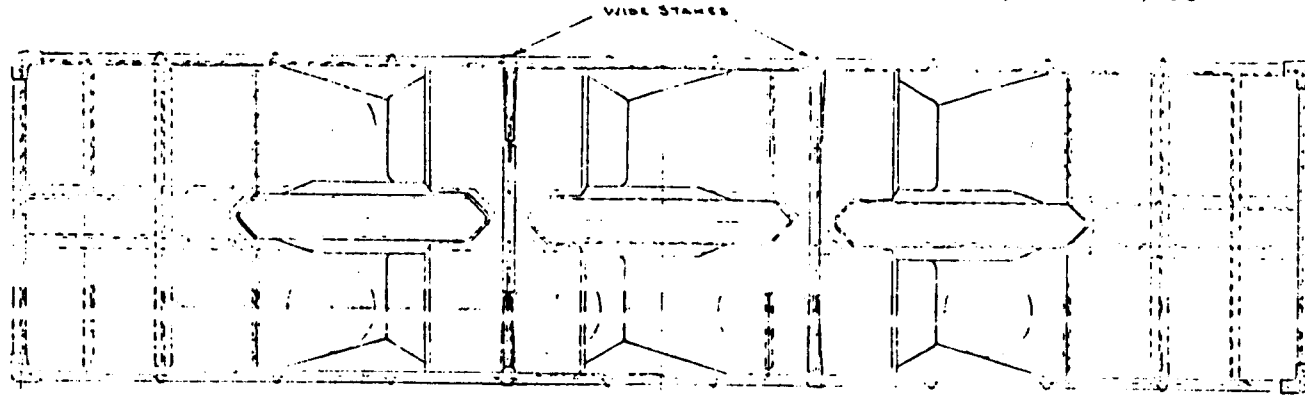
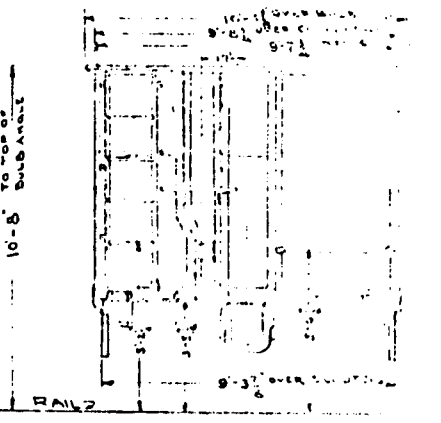
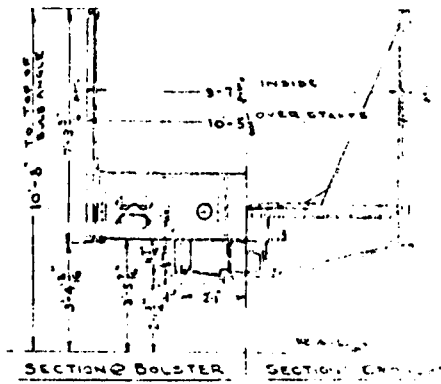
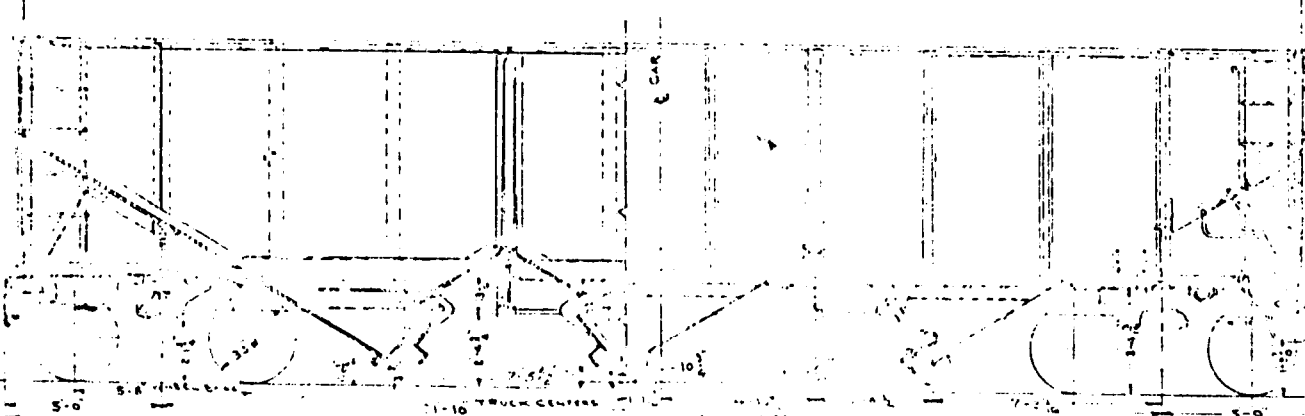


REPUBLIC COMPANY
 70-TON
 HOPPER CAR
 CLASS-HTW
 SERIES- 60,000 TO 60,999



40'-8 1/2" OVER END SILL
 COUPLED LENGTH - 44'-4"

40'-8" INSIDE LENGTH



| | | | | | | | |
|------------------|-------------------|------------------|------------------------|--------------------|---------------------------|---------------------|------------------------|
| BUILDER - | BEHNSIDE TRUCK CO | UNDERSTRUCTURE - | BUILT UP STEEL | WHEELS - | 40" DIA. RAILROAD TYPE | AXLES - | 80" DIA. RAILROAD TYPE |
| PLANT - | JOHNSTOWN PA | UNDERFRAMES - | BUILT UP STEEL | WHEEL FRAMES - | CAPT STEEL W/ WINE | WHEELS - | STEEL |
| WEIGHT - | 53,170 LBS EST. | CENTER SILL - | AA 2 1/2" X 10" X 1/2" | WHEEL LOCS - | WINE | SIDE SILL - | 2" X 4" |
| QUALITY - | 140000 LBS. STEEL | SIDE SILL - | 5" X 3" X 1/2" | TRUCK SIDE FRAME - | VERT. WELD FROM SPIN | MIN. WELD CURVE - | |
| COUPLED LENGTH - | 40'-8" | END SILL - | 5" X 3" X 1/2" | TRUCK SIDE FRAME - | BIRDSONG C.S. BARBER UNIT | UNCOUPLING DEVICE - | STANDARD |
| INSIDE LENGTH - | 37'-7 1/2" | BODY BOLSTER - | 2" BRASS 2" X 10" | TRUCK BOLSTER - | | JOURNALS - | A.A.R. 16 1/2" X 11" |
| TRAILER HEIGHT - | 10'-2 1/2" | DRAFT GEAR - | FACTION | | | | |

C.P.W. 10-16-55.