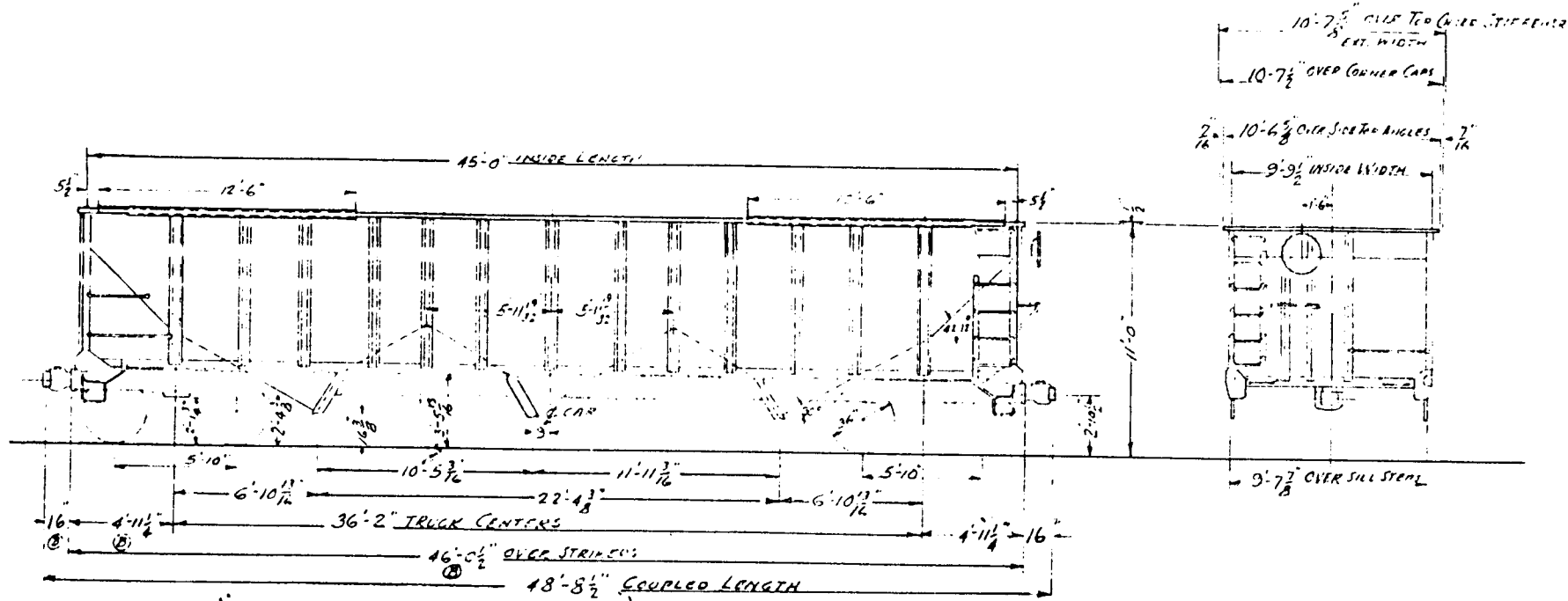


BY..... DATE 12-21-61 SUBJECT.....
 CHKD. BY..... DATE.....
 GEORGE S. M.P.A.P.E. TRIPLE HOPPER CAR

SHEL. NO.....
 JOB NO. C-F-H-7010710-3
 REVISED-A-10-28-61 LAY
 B-3-19-62 LAY HAS 48" OVER STRIKERS

SERIES - A 40000
 CLASS - H-2



BUILDER BETHLEHEM STEEL CO	SLUR STRUCTURE - BUILT UP STEEL	DRAFT GEAR - FRICTION-20% ^{WEST-MARE 50} _{POWER-RE 333}	HAND BRAKE - VERT. WHEEL, NON-SPIN - E-N TINS
BUILT JOHNSTOWN, Pa., 1962	UNDER FRAME - BUILT UP STEEL	COUPLER - 2 1/2" TWL BOTTOM RIM	AIR BRAKE - WESTINGHOUSE A-3 10
LIGHTWEIGHT 61,000 LB. WT.	CENTER SILLS - AAR Z SECTION 41.2" ^{C.S.} _{DE SILL}	DCOR FRAME - CAST STEEL "NINE"	BRAKE SHOES - COMPOSITION
CAPACITY 18,000 LBS. 2368 CU. FT.	SIDE SILLS - 5" x 3 1/2" x 3/8" ANGLE	DCOR LOCKS - INDIVIDUALLY OPERATED ^{WINE-CAM LOCK} _{WHEEL}	" BEAMS - UNIT TYPE "18
INSIDE LENGTH 45'-0"	END SILLS - 5" x 3 1/2" x 3/8"	TRUCKS - CAST STEEL - SPRING PLANLESS - UNIT	SNUBBERS - BARBER S-2-A
INSIDE WIDTH 9'-9 1/2"	TOP CHORD - 5" x 4 1/2" x 7/16" BULL. ANG. 19.1"	JOURNAL BEARINGS - 6 1/2" I.D. ROLLER BEARING ³⁰⁰⁰ _{SKF}	SLACK ADJUSTER - ELCON-NATIONAL _{AUT. 44"}
OVERALL HEIGHT 11'-0 1/2"	BODY BOLSTER - 24" WF BEAM @ 84" x 24" x 1/2" PL. ₍₁₎	WHEELS - 36" - 2-WEAR WROT. STEEL	MIN. RADIUS CURVE

SERIES 40001 - 40300 - TIMKEN
 40301 - 40400 - SKF

SPECIF. F-155