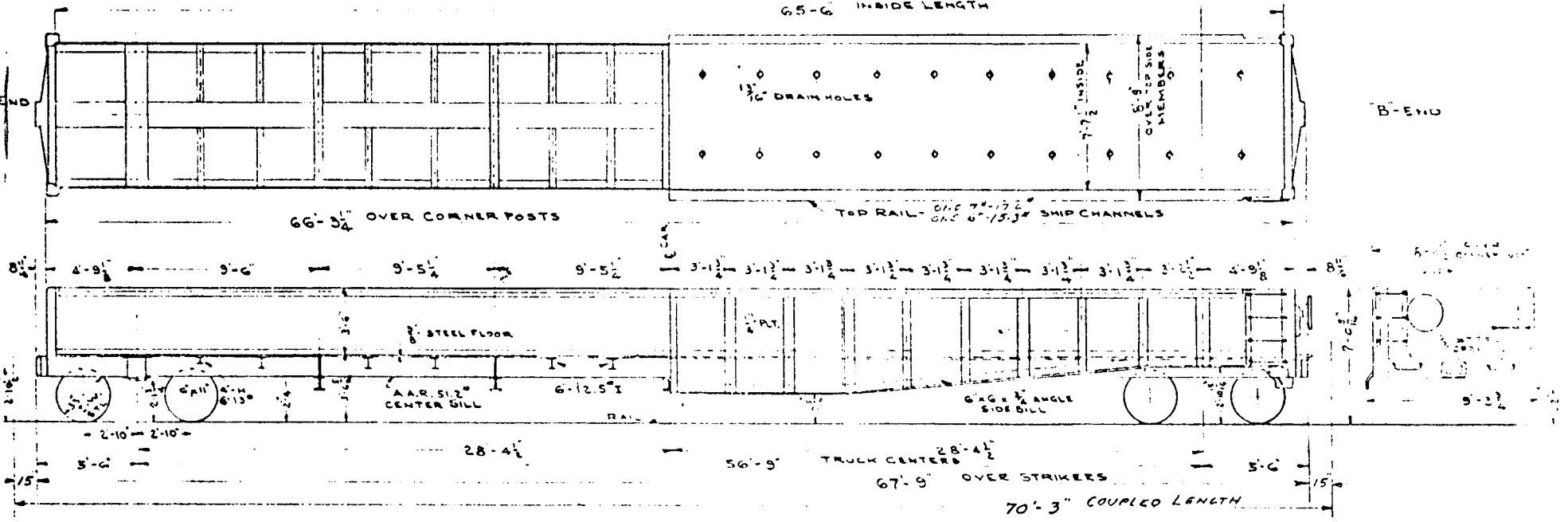
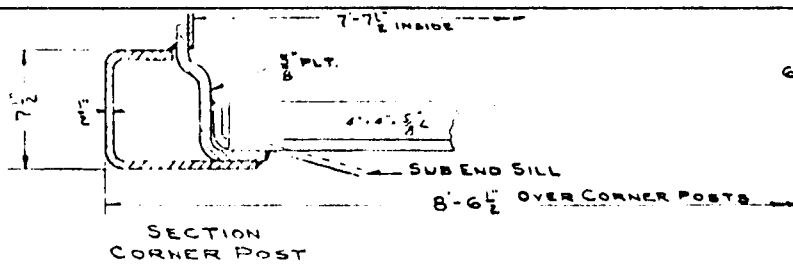
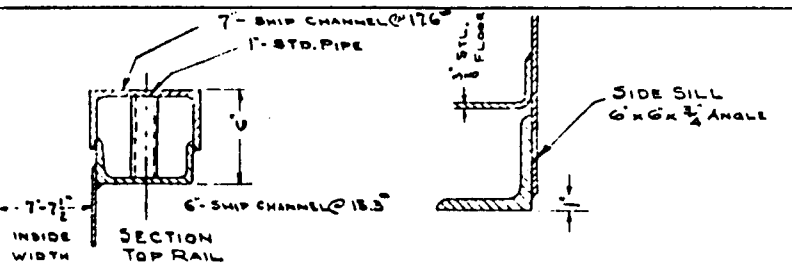


READING COMPANY  
 65'-6" FIXED END GOLDEN  
 CLASS GHO-SERIES  
 WELDED CONSTRUCTION



ORDER - BETHLEHEM STEEL CO.	INSIDE HEIGHT - 3'-6"	END DREADNAUGHT - 1/2" STEEL	BRAKE BEAMS - UNIT TYPE #18
PLANT - JOHNSTOWN, PA. - 1956	UNDERFRAME - WELDED STEEL	FLOOR - 3/4" STEEL	AIR BRAKES - WESTINGHOUSE
WEIGHT - 63400 LBS.	CENTER SILL - A.A.R. Z - 5 1/2"	DRAFT GEAR - FRICTION - WESTINGHOUSE NY-11-F	WHEELS - 33" ONE WEAR STEEL
CAPACITY - 140000 LBS. - 1748 CU. FT.	INTERM. SILL -	HAND BRAKE - AJAX NON SPIN RELEASE	SLACK ADJUSTER - WESTINGHOUSE
COUPLER LENGTH - 65'-6"	SIDE SILL - 6x6x1/2 ANGLE	TRUCK SIDE FRAME & BOLSTER - BIRDSONG C.B.	JOURNAL BOX - PLYWOOD
INSIDE WIDTH - 7'-7 1/2"	SIDE PLATE - ONE 7'-17 1/2" SHIP CHANNEL ONE 6'-15 3/4" SHIP CHANNEL	TRUCK JOBBER - BARBER S-2-A WELDED	EQUIPPED WITH SATCO
			MIN. RADIUS CURVE - 1-0-0 FT.

P.K. 10-14-58

SPRINT  
 SKETCH