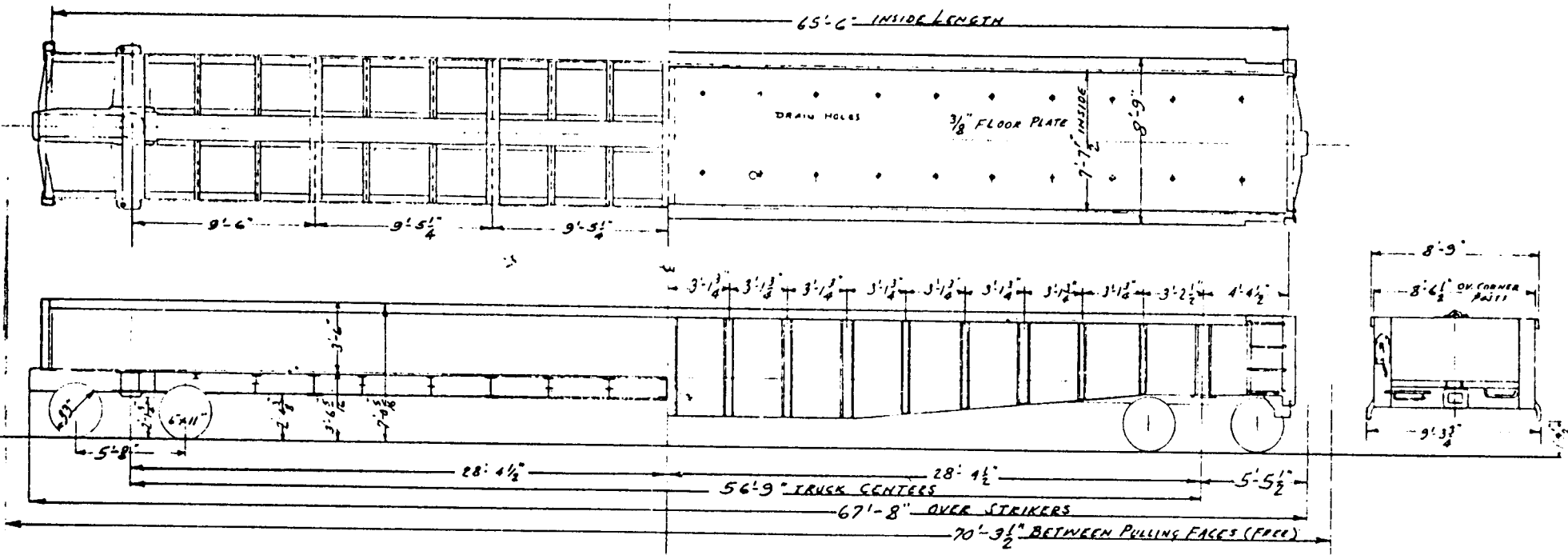


DATE _____ SUBJECT _____ SHEET NO. _____ OF _____
 CHKD. BY _____ DATE _____ JOB NO. _____
 65-6" DROP END GONDOLA CARS

CLASS GHT
 SERIES 30400 TO 30549



BUILDER -	READING COMPANY	INSIDE HEIGHT -	3'-6"	ENDS - "DREADNAUGHT" 1/2" STEEL	ILL. RNT EQUIPT. CO. TWINWAY LADING BAND ANCHORS		
PLT -	READING, PA. 1965	UNDERFRAME -	WELDED STEEL	FLOOR -	3/8" STEEL PLT	BRAKE BEAMS - #18 HANGER TYPE	
CRVY -	63213	CENTER SILLS -	AAR 2" 512"	DRAFT GEAR -	FRICTION - MARK-50	AIR BRAKES - WAB ABC-1 10" CYL.	
CAPACITY -	150,000 LBS. 1748 CU. FT.	DRAFT SILLS -	ONE PC CAST STEEL	HAND BRAKE -	PEACOCK #1260-1 PUMP HANDLE	SLACK ADJUSTER - ELLCON-NATMAN #1340 AUTOMATIC	
SIDE LENGTH -	65'-6"	SIDE SILLS -	6" X 6" X 3/8" ANGLE	TRUCK SIDE FRAMES & BOLSTERS -	BIRDSBORO 2" HAND	WHEELS - 33" I.W. STEEL	
WIDTH -	7'-7 1/2"	SIDE PLATE -	1-6" 1-6" 15-3"	TRUCK SPRINGS -	AAR-D3 HOLLAND E-2 SHUB.	MIN. RAD. CURVE -	140 FT.