

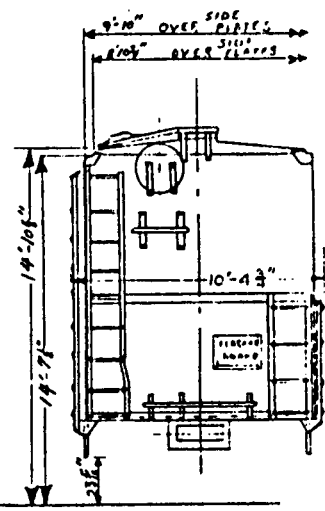
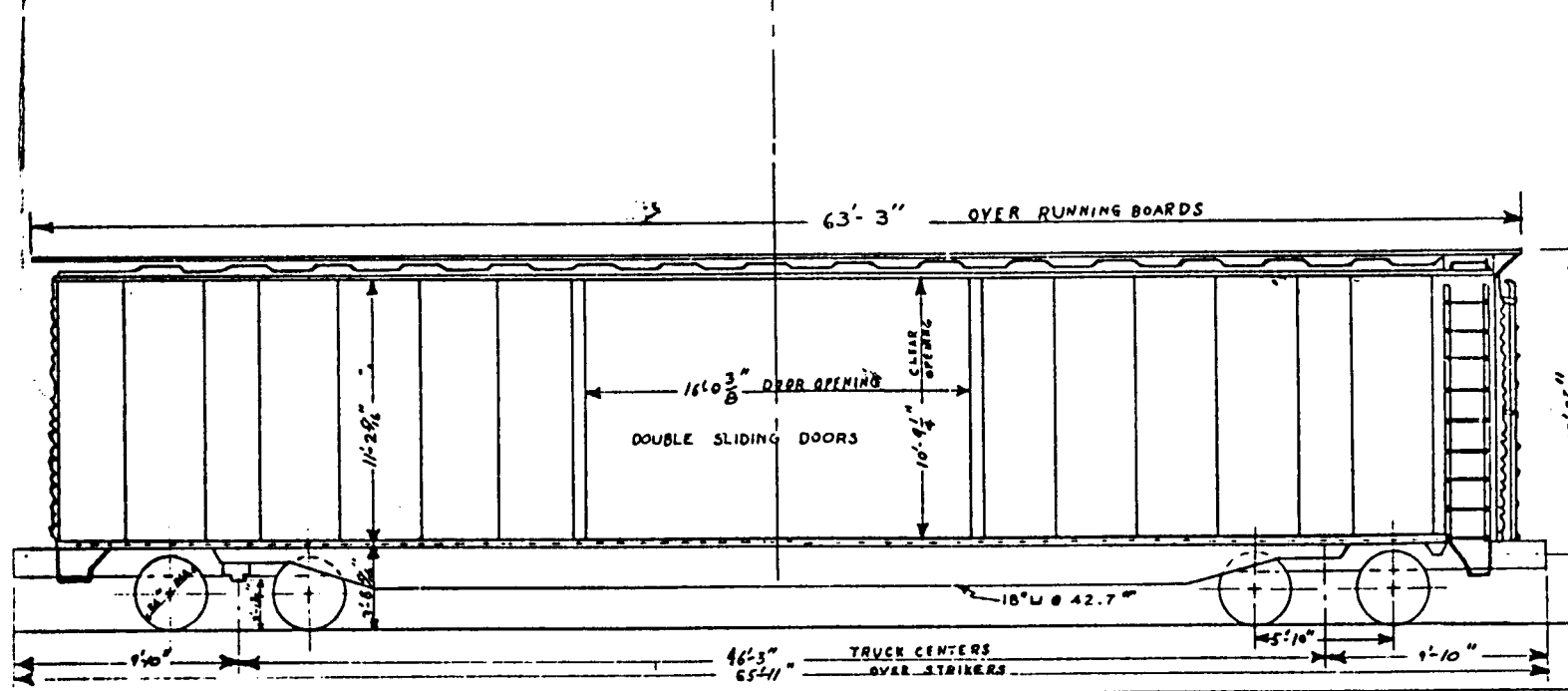
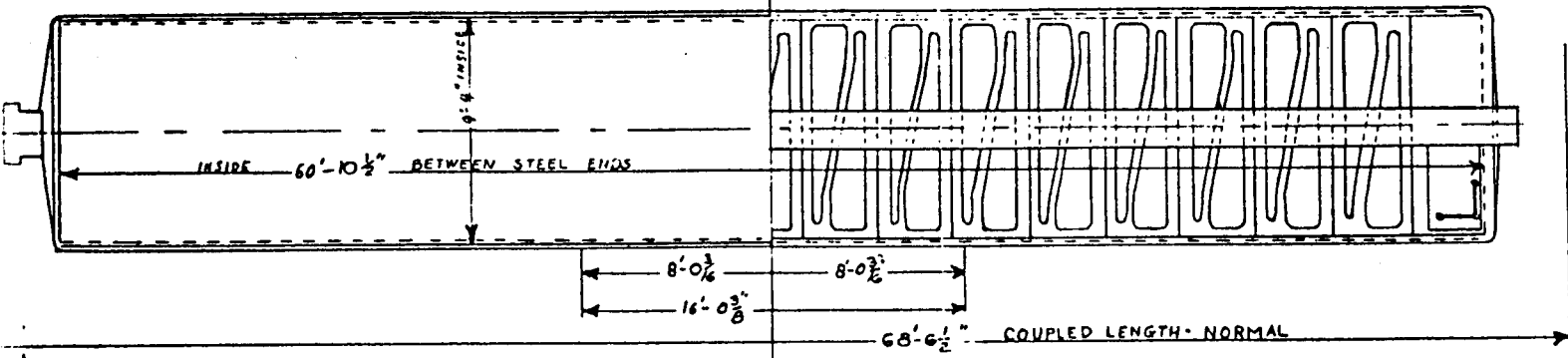
READING COMPANY
MECHANICAL DEPARTMENT
READING, PA. JAN. 15, 1967

60'-10 1/2" BOX CAR
WITH 16'-0 3/8" SIDE DOOR

SERIES: 19907 - 19910
CLASS: XAPD

NOTE:

	LIGHT WT.	WITH RACK:
19907	85 600 LBS.	125 100 LBS.
19908	87 000 LBS.	131 000 LBS.
19909	85 300 LBS.	116 800 LBS.
19910	85 800 LBS.	117 600 LBS.



MANUFACTURER - THRALL CAR MFG. CO. 1962 CHICAGO BRIGHS STANDARD - SEE NOTE ABOVE CAPACITY - 100,000 DIMENSIONS - 60'-10 1/2" INSIDE - 9'-4" BETWEEN POSIS INSIDE - 11'-2 3/8"	SLIDING CENTER SILL - AAR Z @ 41.2" CENTER SILLS - 15" 35" CHANNEL SIDE SILLS - 3" Z @ 6.7" FLOOR STRINGERS - 6-4" I @ 7.7" END SILLS - 6" x 3 1/2" x 1/2" BODY BOLSTER - BUILT UP STEEL SUPER STRUCTURE - BUILT UP STEEL	ROOF - 14 GAUGE GALV. RIVETED STEEL CARLINES - DRAFT GEAR - C-15 MASH DC COUPLERS - R TYPE WITH E SHANK DOOR FIXTURES - SUPERIOR CAR DOOR HANDBRAKE - AAR NONSPIN TYPE RUNNING BOARD - AAR STEEL	TRUCK SIDE FRAME - CAST STEEL TRUCK BOLSTER - CAST STEEL JOURNALS - 6 1/2" x 12" TIMKEN AIR BRAKE - AB 1210 TRUCK BRAKE - ROD UNDER BOLSTER TRUCK SPRINGS - AAR COILED D-5 MIN. RADIUS CURVE -	WHEELS - ONE WEAR H-36 AAR ENDS - CORRUGATED STEEL SIDE PLATE - 6" x 3 1/2" SIDE POST - 3" Z @ 6.7" DOOR POST - 3" Z @ 12.6" SILL REIN. - 1 1/2" x 1/2" x 1/2" STEEL BRAKE SHOES - AAR-FA STEEL BACK	CUSHIONING DEVICE - KEYS TOILET RAILWAY EQUIPMENT 20" TRAVEL - BOLLS COUPLER JOBS - BX - 4.5 SLACK PLAYS - FULL COIL SIDE BEARINGS - STEEL FLOOR - 2" LAMINATED
---	---	--	--	--	---