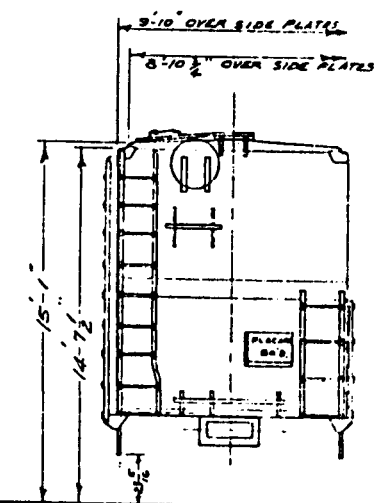
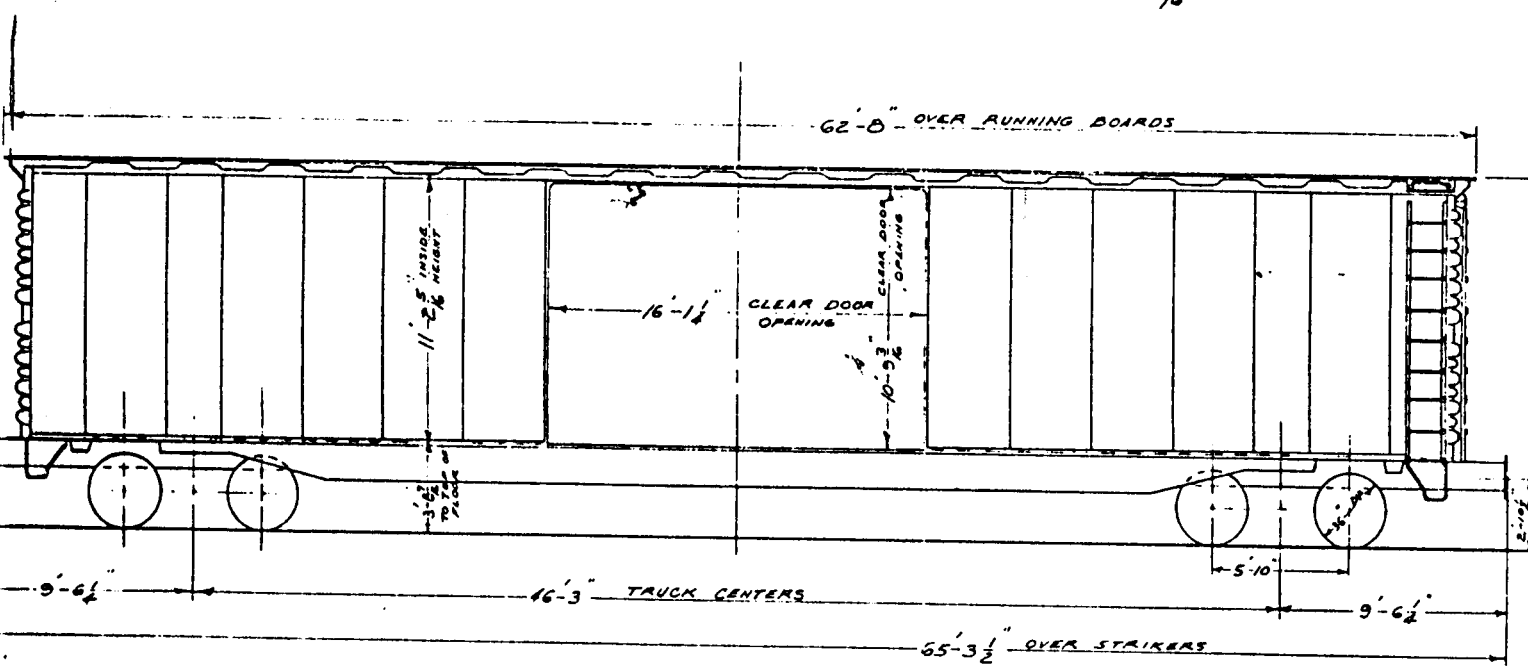
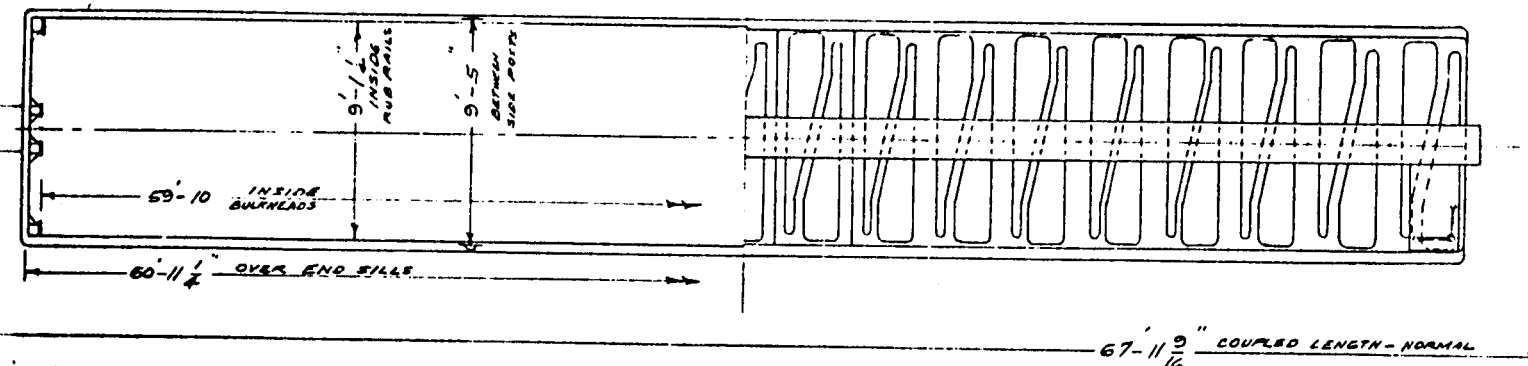


60'-9" BOX CAR  
 WITH 16'-1/4" DOUBLE SIDE DOOR  
 CLASS 1 APC  
 SERIES - 19,900 TO 19,906



AR - A. C. F. 7 - 1964	UNDERFRAME - SLOWING CENTER 3RL-BIT. V	ROOF - SAE GALV. FINISH STEEL	TRUCK SIDE FRAME - ASF CAST STL.	WHEELS - TWO NEAR - AAR J-36	CUSHIONING DEVICE - ACF FREIGHT SAYER B
WT - 80,000	CENTER SILLS - A-36 MESSID 2"	CAR LINES -	TRUCK BOLSTERS - ASF CAST STL.	ENDS - CORRUGATED STEEL	
TT -	SIDE SILLS - 6" x 6" x 3/8" L	DRAFT GASK - NATIONAL MIT	JOURNALS - 6 1/2" x 12"	SIDE PLATE - C Z @ 15.7"	
W INSIDE - 59'-10"	INTERMEDIATE SILLS - 6" x 6" x 3/8" L	DOOR OPENERS - SPECIAL TYPE PLEAK	A.S. BRACKS - WEST. ABYER-LESS CTR.	SIDE POST - B GAGE NAT SECTION	
INSIDE - 9'-1 1/4"	END SILLS - 6" x 3 1/2" x 3/8" L	DOOR FITTINGS - CANEL	TRUCK BRAKE - WEST. 80-B WACOMC	DOOR POST - 3 1/2" x 3 1/2" x 1/2" BOX SECTION	
INSIDE - 11'-2 3/8"	BODY SILETER - BUILT UP STEEL	HAND BRAKE - ELLCOB NATIONAL	TRUCK SPRINGS - AAR DS COIL TYPE	SIDE SILL REINF. - 1A" x 3" x 3/8" L	
	SUPER STRUCTURE - BUILT UP STEEL	MUNNING BOARD - STEEL US 61R UN	MIN. RAIL'S CURVC - 180' UNCOUPLED	BRAKE SHOES - COBRA	