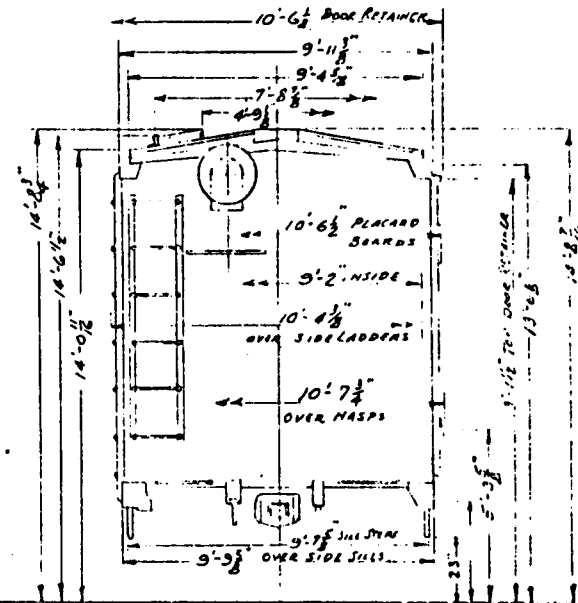
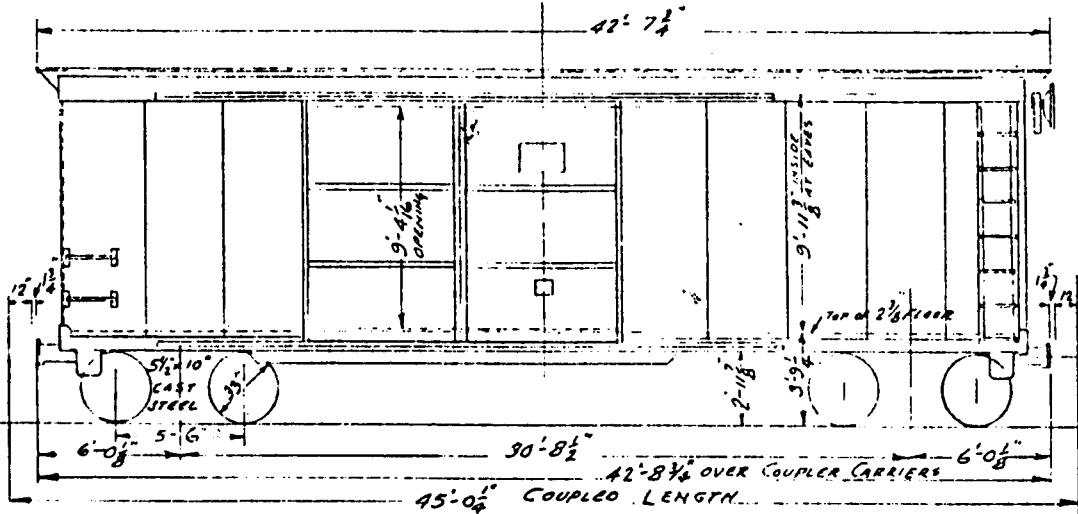
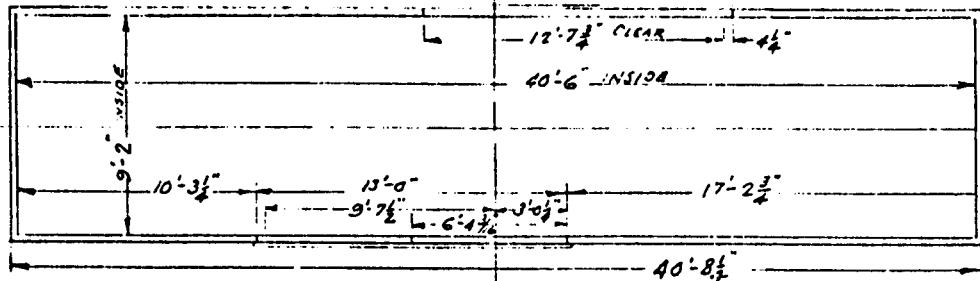


40'-6" DOUBLE DOOR BOX CAR
CLASS XAE SERIES 191100-19115



STEEL SID & END LINING 4'-0" HIGH WITH LADING BAND ANCHORS - 1 1/2" T.&G ABOVE

MAX. TRACK CURVATURE - 60 FT. (UNCOUPLED)

| | | | | | | | |
|---------------|----------------------|-----------------|---------------------------|---------------|-------------------------------|-------------------|------------------------------|
| BUILDER | READING COMPANY | UNDERFRAME | BUILT UP STEEL | ROOF | STANDARD DIAG. PANEL | AIR BRAKES | WESTINGHOUSE A-B 10"-12" |
| BUILT | READING, PA. 1939 | CENTER SILL | 10" SLS @ 25.3" | CARLINES | 12 GA. SEAM CAPS | TRUCK SIDE FRAMES | BIROSAARD C.S. |
| WEIGHT | | SIDE SILL | 7" C @ 18.8" | RUNNING BOARD | U.S. HYPSIM WELD STEEL | " BOLSTER | " |
| CAPACITY | 100000 LBS. 3693 CWT | INTERM. SILL | NONE | DRAG GEAR | DEYER DOUBLE SPRING | JOURNALS | AAR 5 1/2" x 10" PLAIN |
| INSIDE LENGTH | 40'-6" | END SILL | 3 1/2" x 6" x 5 1/8" ANG. | COUPLER | AAR DFF 2" 6 1/2" x 8" BOTTOM | BRAKE BEAMS | AAR #15 |
| " WIDTH | 9'-2" | BODY BOLSTER | BUILT UP STEEL | DOOR FIXTURES | CRCO | SPRINGS | AAR D-2 WITH CARDWELL TYPE A |
| " HEIGHT | 9'-11 1/8" | SUPER STRUCTURE | " | HAND BRAKE | A1AK | WHEELS | 33 C.I. |

READING COMPANY
OFFICE SUPT. M. P. & R. E.
READING, PA. DEC 21, 1960