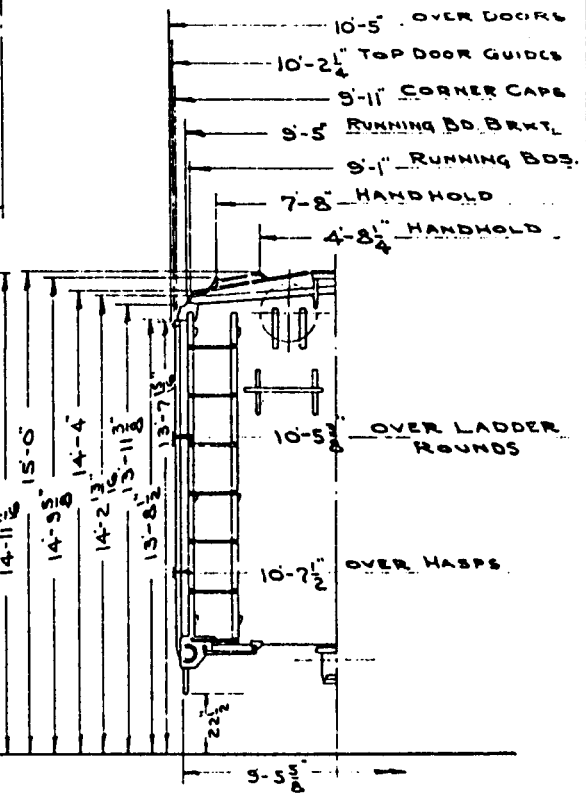
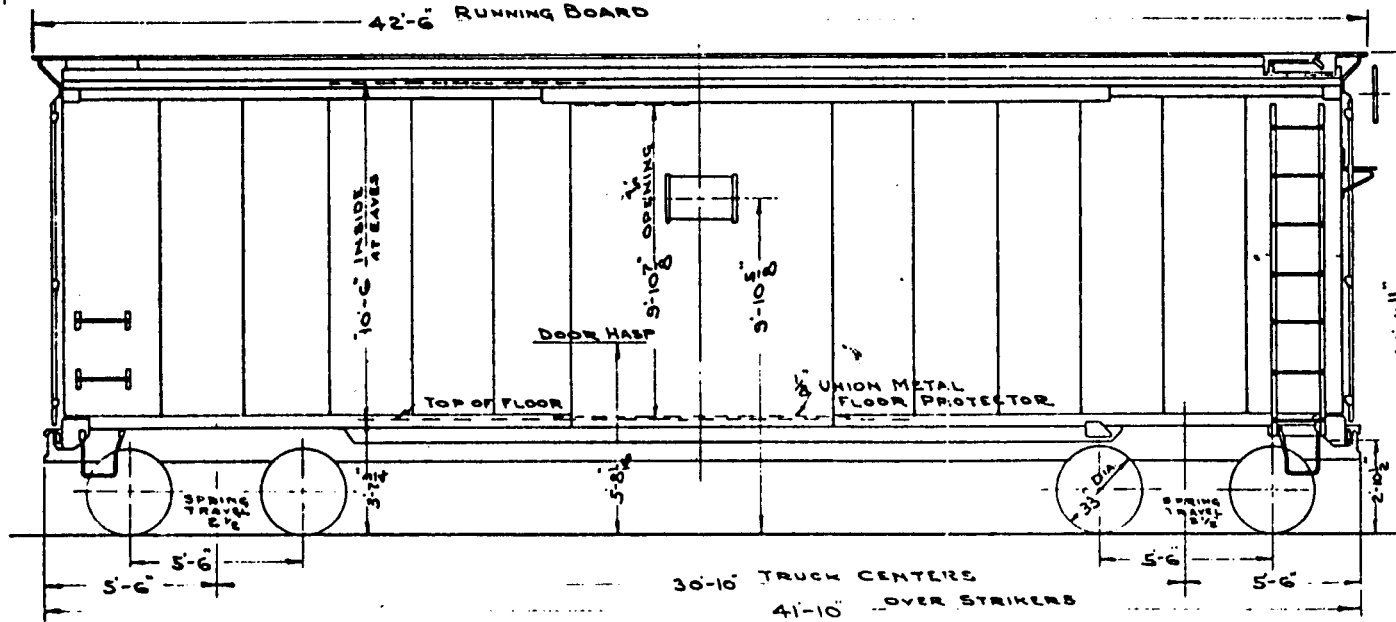
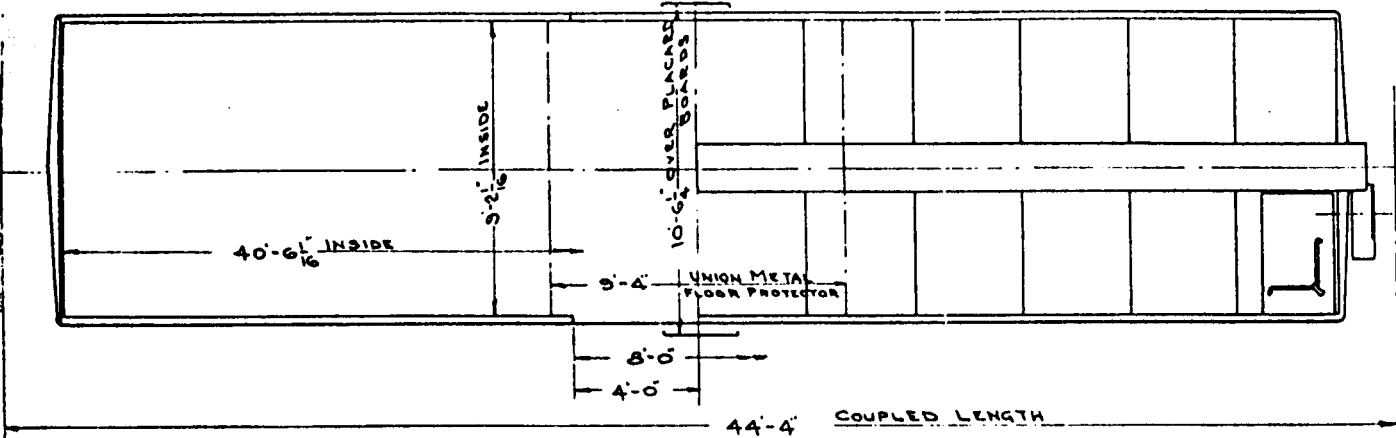


40'-6" BOX CAR
 WITH 8'-0" SIDE DOOR
 CLASS XMB
 SERIES 108,000 TO 108,499



BUILDER - AMERICAN CAR & FDY.	UNDERFRAME - BUILT UP	ROOF - A.C.F. RIVETED ROOF	TRUCK SIDE - BIRDSEED	WHEELS - ONE WEAR STR.
BUILT - BERWICK - 1950	CENTER SILLS - A.A.R. 2-25 3/4"	CARLINES -	TRUCK BOLSTER - BIRDSEED	END - A.C.F. CORRUGATED ST.
RIGHT WEIGHT - 45135	SIDE SILLS - 6" x 3 1/2" x 1/2"	DRAWGEAR - MINTA 2-21 1/2"	JOURNALS - 5 1/2" x 10"	SIDE PLATE - A.A.R. 9-0"
CAPACITY - 100000 LBS.	INTERMEDIATE SILLS -	COUPLER - TYPE - BOTTOM OPEN 10"	AIR BRAKE - WESTINGHOUSE AB 10	SIDE POSTS - A.A.R. 2 1/2"
LENGTH INSIDE - 40'-6 1/16"	END SILLS - 6" x 3 1/2" x 1/2"	DOOR FITURES - SUPERVISOR	BRAKE BEAMS - DAVIS AAR-10	DOOR POST - A.A.R. 4 1/2" x 1 1/2"
WIDTH INSIDE - 9'-2 1/16"	BODY BOLSTER - BUILT UP STEEL	HAND BRAKE - UNIVERSAL	SHUBBER - BARBER 3-2 A	SIDE REIN. AT DOOR
HEIGHT INSIDE - 10'-0"	SUPERSTRUCTURE - " "	RUNNING BOARD - A.P.C.	MIN. RADIUS CURVE - 67 1/2 FT.	6" x 3 1/2" x 107" B.A.

READING COMPANY
 OFFICE - SUPT. M.P.&R.
 READING, PA. OCT. 12 1950.