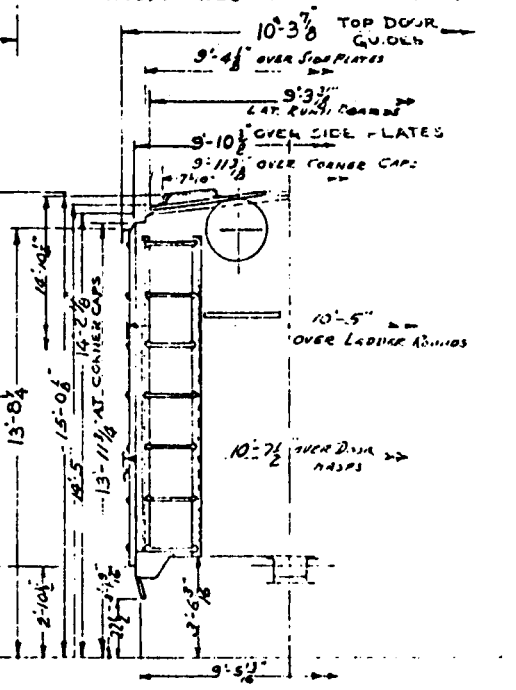
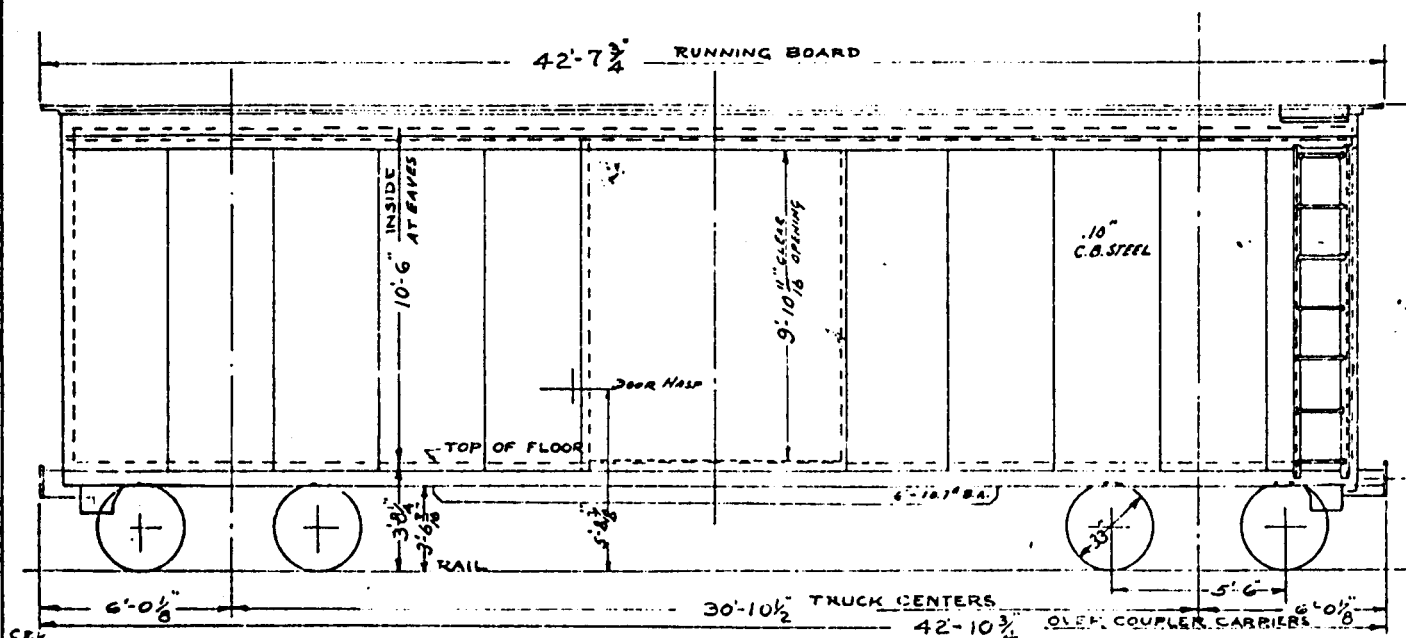
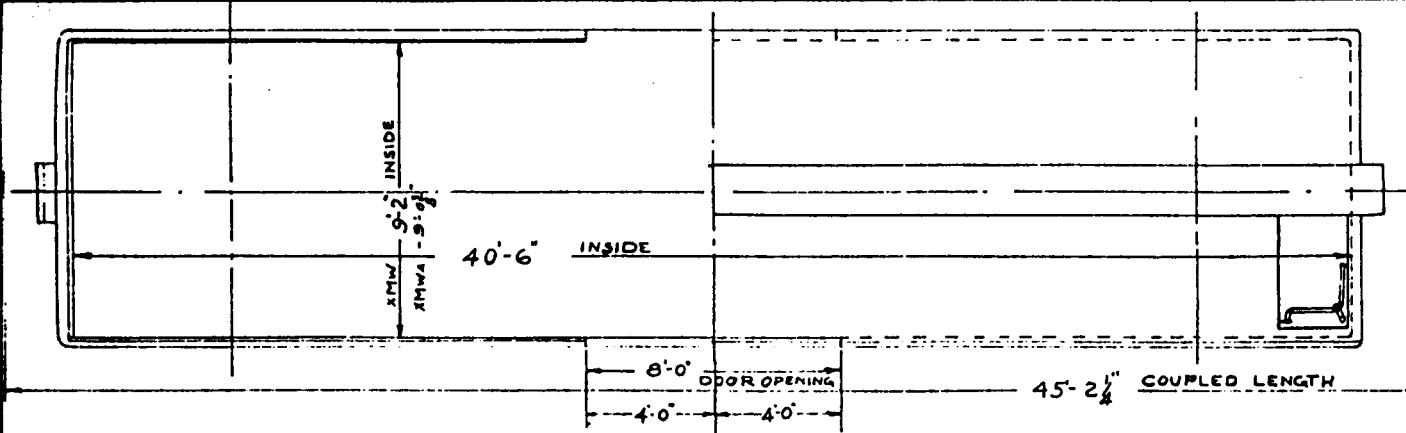


40'-6" BOX CAR
 WITH 8'-0" SIDE DOOR
 CLASS XMW
 SERIES - 109,000 TO 104,690

18060-18103
 18035-18053
 CLASS XMWA - SERIES 18000-18034
 EQUIPPED WITH EVANS "DF" LOADER
 WT. 57600 - CAR # 18011
 53600 - " 18013
 53600 - " 18025

CAR IN LEASE BACK PROGRAM
 RENUMBERED - 114000 TO 114175



BUILDER - READING COMPANY	UNDERFRAME - DURVEA BLTOP
BUILT - 1046	FIFTH SILL - AAR 2 SECT 36 2"
LIGHT WEIGHT - 46500 LBS	SIDE SILLS - AAR 2 2 1/2 2"
CAPACITY - 3858 CUFT 100000 LBS	INTERMEDIATE SILLS
LENGTH INSIDE - 40'-6"	END SILLS - 6" x 3 1/2" x 5/16"
WIDTH - 9'-2"	BODY BOLSTER - BUILT UP STL
HEIGHT - AT RAILS - 10'-6"	SUPER STRUCTURE -

ROOF - MURPHY RIVETED STEEL	TRUCK SIDE - BILUSHILO CAST IRON BOLSTERS
CANLINES	JOCKWHEELS - 5 1/2" x 10"
DRAW GLAR - DURVEA 2 S. CUSHION	AIR BRAKES - WESTINGHOUSE LAB 10
COUPLERS - AARTYPE F BOTTOM	BRAKE BEAMS - A.A.W. #18
DOOR FIXTURES - SUPERIOR	FRICTION TRUCK SPRINGS -
HAND BRAKE - AJAX	MIN. RADIUS CURVE - 67 1/2 FT.
RUNNING BOARD - STEEL APER	

WHEELS - ONE WEAR STEEL	WT. OF FIRST CAR - 115,000 LBS - MAX
ENDS - IRON HAUGHT BT	READING COMPANY
SIDE PLATE - AAR 10 3 9 5 3"	OFFICE
SIDE POSTS - AAR 20 5 1"	SUPT. 11/2/24
DOOR POST - AAR 8 1/2 1/2 1/2"	READING, PA
SIDE RING AT DOOR - 6 1/2 1/2 1/2 1/2"	JULY 20, 1946

WHEELS - ONE WEAR STEEL	WT. OF FIRST CAR - 115,000 LBS - MAX
ENDS - IRON HAUGHT BT	READING COMPANY
SIDE PLATE - AAR 10 3 9 5 3"	OFFICE
SIDE POSTS - AAR 20 5 1"	SUPT. 11/2/24
DOOR POST - AAR 8 1/2 1/2 1/2"	READING, PA
SIDE RING AT DOOR - 6 1/2 1/2 1/2 1/2"	JULY 20, 1946