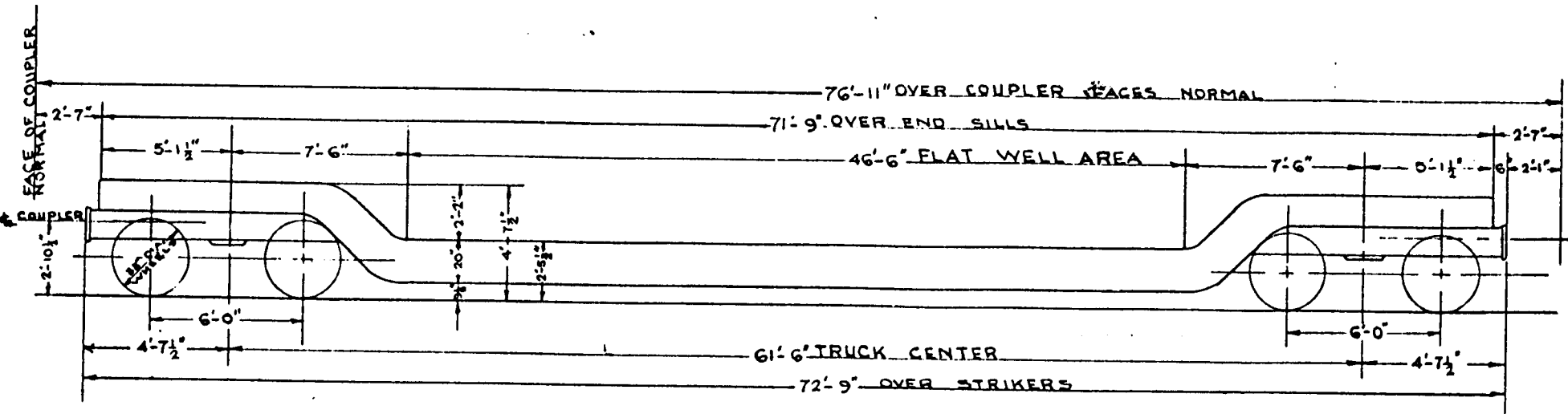


CLASS - FWF

AQCX-100, 101 (CLEAVE BROOKS REPORTING MARKS)
 READING CO. CLASS - FWF
 AAR MECH. DESIGNATION - "FD", CODE P-220

CAPY. - 190,000 LBS
 LD. LMT. - 210,800 ..
 LT. WT. - 104,200 ..



* ACTUAL LT. WT. OF CAR

BUILDER - BERWICK FORGE & FAB.	WIDTH-OVER SIDE SILLS - 9'-10"	BODY CENTER PLATE - 16"-DIA.	SIDE FRAME - STL. GRADE-B	HAND BRAKE - PEACOCK # 8504NS
YEAR BUILT - 1968	UNDERFRAME - WELDED (Fabricated)	CENTER PIN - 2" DIA. O.H.S.	TRUCK BOLSTER -	BALL CRANK - AAR # GG
WEIGHT - 104,200 LBS. *	CENTER SILL -	ROPING STAPLE - (4 Per Car)	AXLES - 7" X 12"	BRAKE SHOES - V-141 - COBRA
CAPACITY - 190,000 LBS.	CROSS BEARERS - (9 R/C)	COUPLER - B-EGOA-WT ROTARY OPERATED	JOURNAL BRG. - ROLLER BRG. AP	
LOAD LIMIT - 210,800 LBS.	CROSS TIES - (2 R/C)	CUSHIONING DEVICE - FREIGHTMASTER E-107M	SPRINGS - 0-3	
INSIDE LENGTH - 71'-9"	SIDE SILL -	UNCOUPLING .. - ROTARY-BURCH OPERATED	SIDE BEARING - STUCKI	
OVERALL LENGTH - 76'-11"	END SILL - 13 Y8 FORMED CHANNEL	AIR BRAKE - "A B D"	WHEELS - 38" - ONE WEAR WS	
LENGTH OF DEPRESS - 46'-6"	FLOORING - 38 PLATE	TRUCKS - ASP - HIDE CONTROL	BRAKE BEAMS - WABCO PAC	