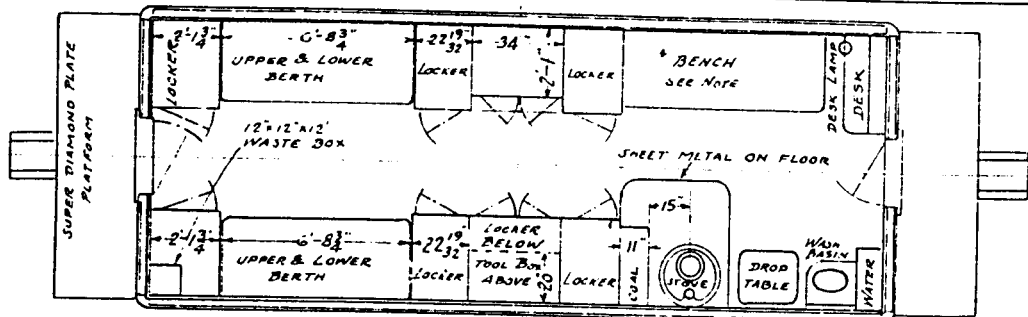


RAILROAD	YEAR	SERIES	CLASS	NUMBER OF BERTHS
READING CO.	1942	92930 - 92979	NMN	2-UPPER 2-LOWER
L & N.P.R.R.	1942	10 - 17	NE	3-UPPER 3-LOWER

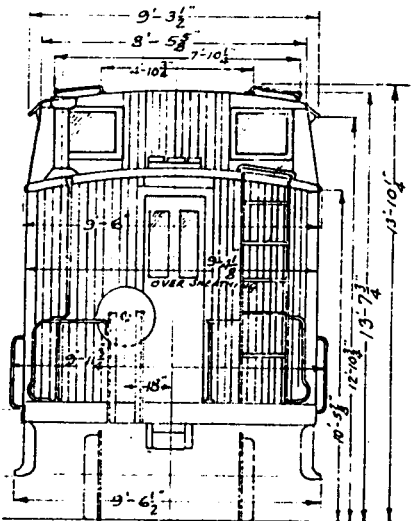
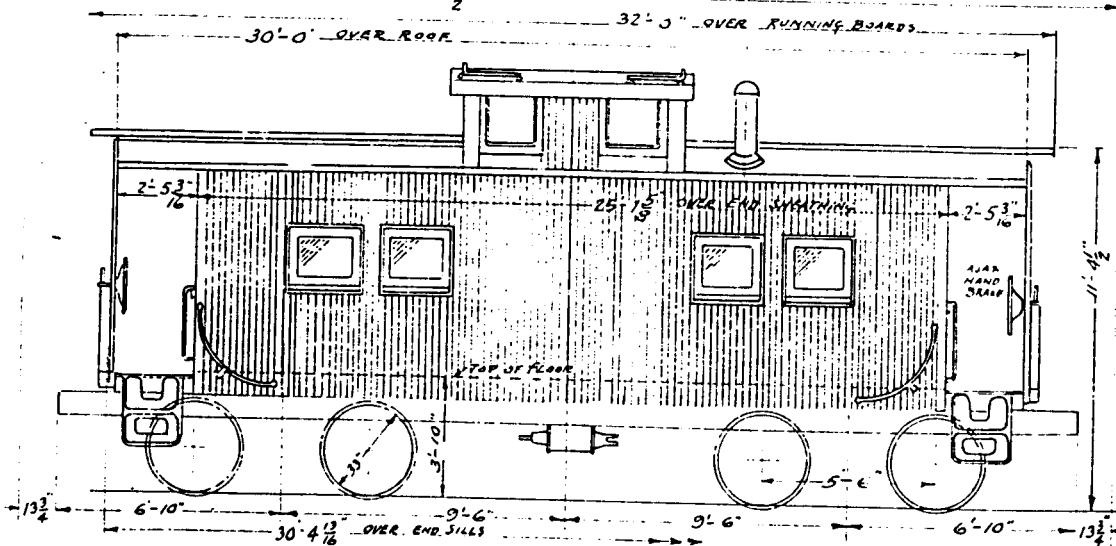
COMPOSITE
EIGHT WHEEL
CABOOSE CAR.



34'-11 1/2" COUPLED LENGTH

32'-5" OVER RUNNING BOARDS

30'-0" OVER ROOF



BUILDER -	READING COMPANY	UNDER FRAME -	WELDED STEEL	ROOF -	TUBEROID ON 1/4" HOOD	TRUCK FRAME -	BIRD'S BONO C STEEL
BUILT -	1942	CENTER SILL -	10" x 35" S.B. CHAN.	CARLINES -	STEEL	BOLSTER -	"
WEIGHT -	40750	SIDE SILL -	6" x 3 1/2" x 3/8" Z"	DRAFT GEAR -	DURVAY CUSHION	JOURNALS -	5" x 9"
CAPACITY -		INTERMEDIATE SILL -	NONE	COUPLER -	AAR TYPE "B" RTT OVER	BRACKS -	WESTINGHOUSE AB 10
INSIDE LENGTH -	28'-4"	END SILL -	7"-12.25" CHAN	DOOR FIXTURES -	READING COMPANY	BRAKE BEAM -	AAR # 15
WIDTH -	8'-6 1/2"	BODY BOLSTER -	WELDED STEEL	HAND BRAKE -	AAR	SLEETS -	2 UPPER 2 LOWER - SEE NOTE
HEIGHT -	8'-6 3/8"	SUPER STRUCTURE -	STEEL - WOOD LIN. & BENCH	LOCKERS -	.05" STEEL	CUPOLA -	FOUR SEATS

* L & N.P. CARS HAVE ADDITIONAL UPPER & LOWER BERTH AND BENCH

READING COMPANY
OFFICE SUPT. M.P. & R.E.
READING, PA. OCT. 2, 1942