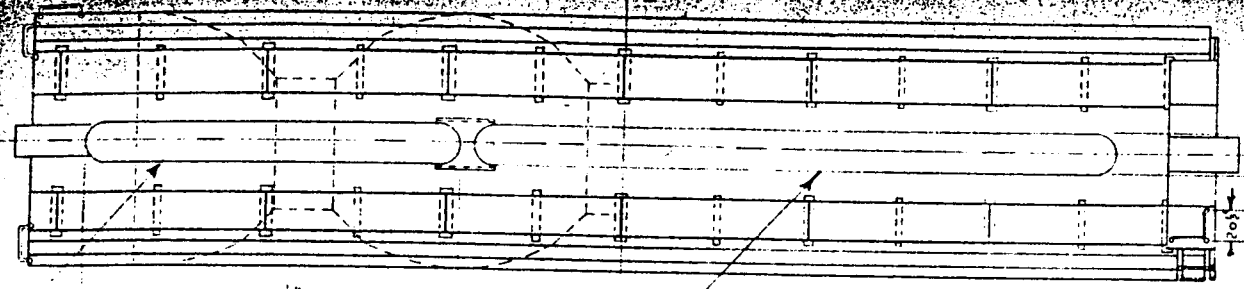
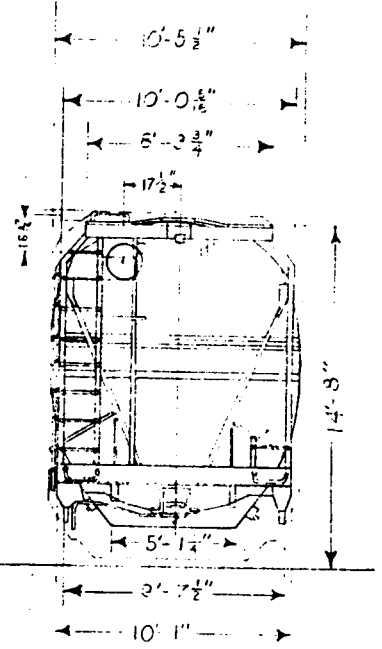
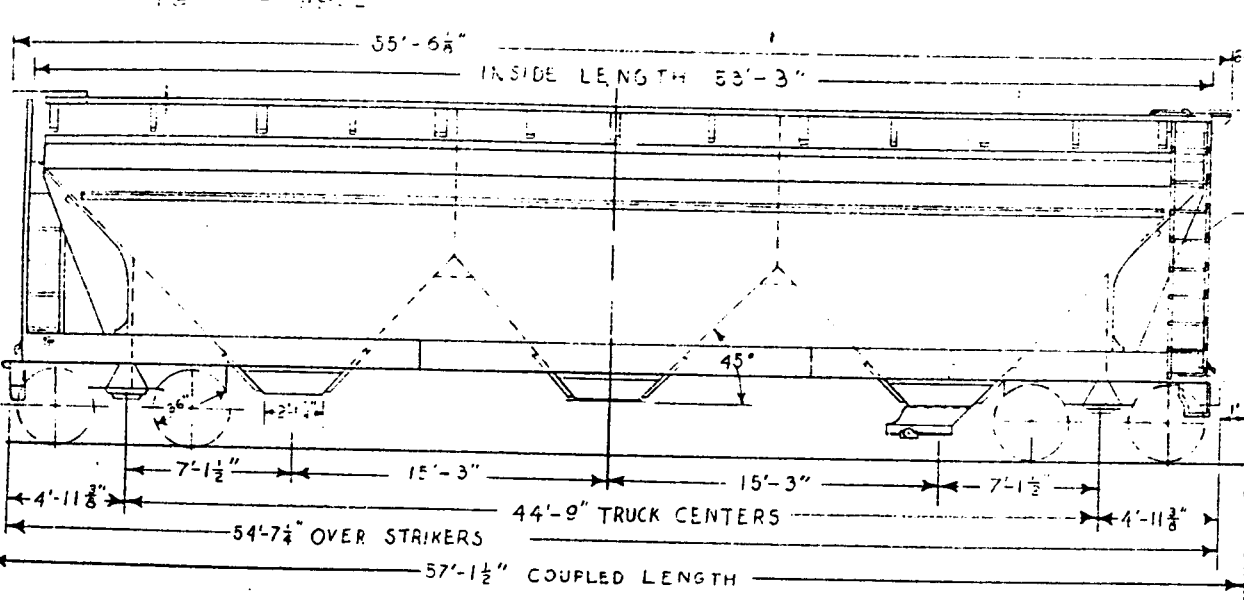


READING COMPANY  
MECHANICAL DEPT.  
READING, PA.

(100 TON)  
STEEL CENTER  
FLOW CAR  
SERIES 79900-79902  
CLASS-LCJ  
SERIES 79903-79902 CLASS-LOK



← CARS HAVE ELONGATED HATCH 79903-79902  
← CARS HAVE DOMED HATCH 79900-79902



BUILDER	ACF
BUILT	ACF
WEIGHT	67,600* EST.
INSIDE LENGTH	53'-3"
INSIDE WIDTH	10'-5 1/4"
CAPACITY	4,600 CWT.
UNDERFRAME	BUILT-UP-STEEL

SIDE SILL	3" FACETATED STEEL
CENTER SILL	2" X 6" TRI-TELL
INTERMEDIATE SILL	2" X 2 1/2" X 26" CENDE
BOILER BOLSTER	BUILT-UP-STEEL
CAR STRUCTURE	BUILT-UP-STEEL
CARLINES	NONE

COPPER	AAR TYPE E
HATCH	AAR NON-LINEN
RUNNING BOARD	GALV. STEEL
TRUCK FRAME	CAST STEEL
TRUCK BOLSTER	CAST STEEL
AIR BRAKE	WABCO 1A ABL VALVE
DRAW SEAL	MINER RF-161

SNOWBEE SHIELD	AAR
BRAKE BEAM	WAR BEAM
JOURNALS	6" X 12"
ROOF	3/8" A441 STEEL
MIN. RAD. CURVE	125'