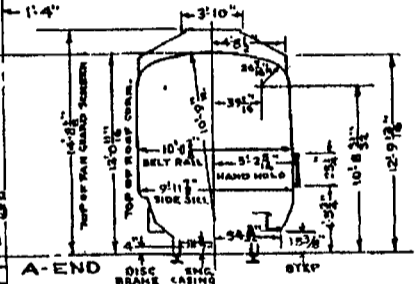
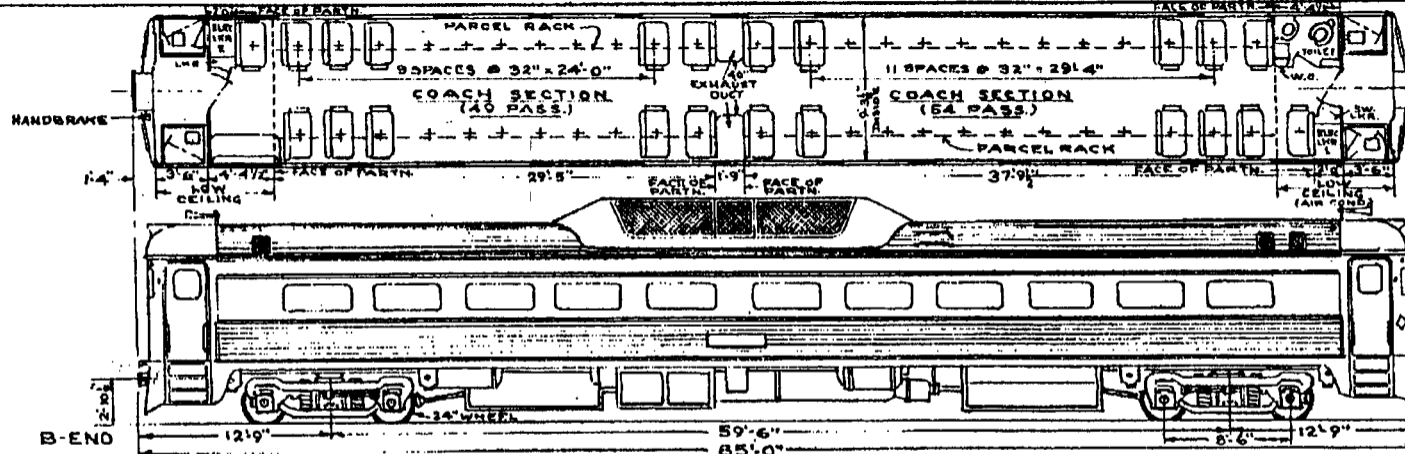


**600H.P. RAIL DIESEL CAR
CLASS ROB-13
NOS. 9151 to 9162**



BUILT BY THE BUDD COMPANY, YEAR 1962	ENGINES - 2 DETROIT DIESEL - DIV. G.M.C.	BATTERIES - EXIDE 32-MGD-13-32 CELL-15P-280AH
PASSENGER CAPACITY - 103	MODEL NO. 62806 - 300H.P. - 2000 R.P.M.	FUEL OIL - 340 GALS.
WEIGHT - WORKING ORDER - NOS. 9151 & 9152, 121,900 LBS., NOS. 9153 TO 9162, 120,800 LBS.	DRIVE - DIRECT BY HYDRAULIC TORQUE	LUBE OIL - 13 GALS. - TRANSMISSION OIL - 18 GALS.
CURVATURE - 250 FT. RADIUS - COUPLED	CONVERTER, LOCKUP CLUTCH	WATER - SERVICE 75 GALS. - ENG. COOL. 150 GALS.
EXCITATION EQUIPPED - NOS. 9151 AND 9152	GENERATORS - GK 16B780 - 15 K.W. - 750 R.P.M.	SAND - TOTAL CAP. 600 POUNDS
	AIR COMPRESSOR - 2CY3B - MOTORIZED	JOURNALS - SKF ROLLER BEARING 5 1/2" X 10"
	BRAKES - "BUDD" DISC TRUCK	SPEED RECORDER - BARCO DPC-120
	AIR BRAKE - NEW YORK NO. 26 - NO. R-5726B	CAB SIGNAL - U.S.S.G. "EG" - SCHED. 272-4 IND.