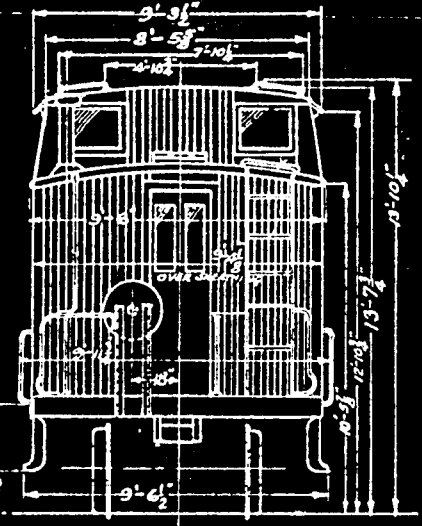
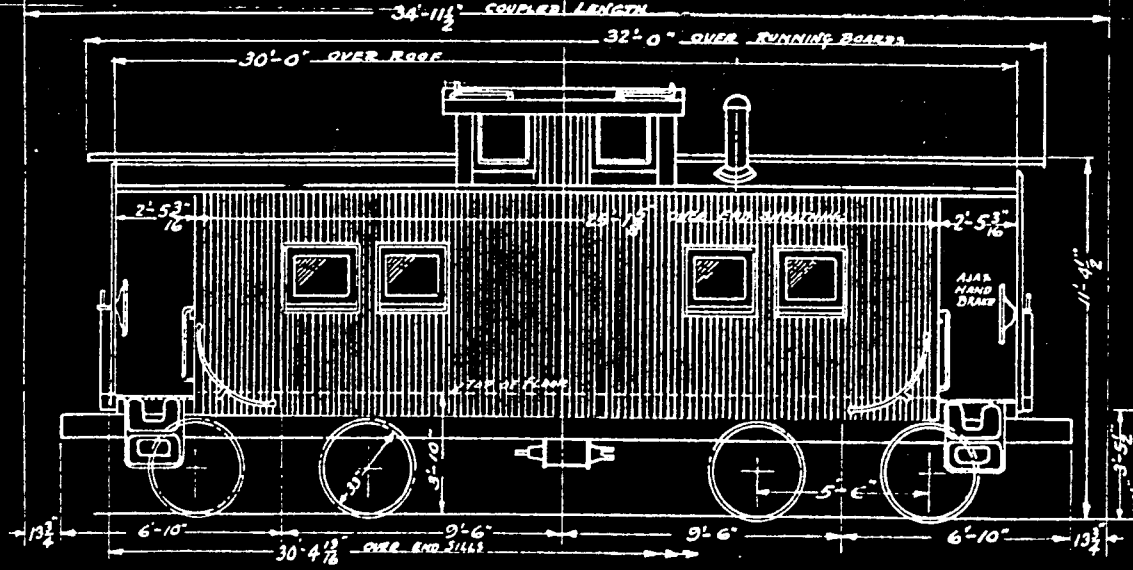
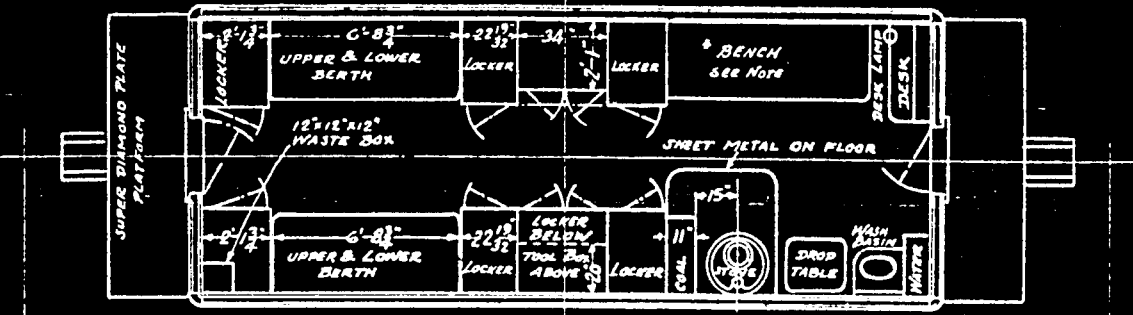


RAILROAD	YEAR	SERIES	CLASS	NUMBER OF BERTHS
READING CO.	1942	92930 - 92979	NMN	2-UPPER 2-LOWER
L.B.&N.P.R.R.	1942	10 - 17	NE	3-UPPER 3-LOWER

**COMPOSITE
EIGHT WHEEL
CABOOSE CAR.**



BUILDER - READING COMPANY	UNDER FRAME - WELDED STEEL	ROOF - RUBEROID ON 1/4" WOOD	TRUSS FRAME - BIRCH BOSS C. STEEL
BUILT - 1942	CENTER SILL - 10-39 S.B. CHAN.	CARWHEELS - STEEL	BOLSTER - " "
WEIGHT - 40750	SIDE SILL - 6'-3 1/2" x 3/4" Z	DRIFT GEAR - DURYEA CUSHION	JOURNALS - 4" x 9"
CAPACITY - NONE	INTRAM SILL - NONE	COUPLER - AAR TYPE 2" BOTT. OPS.	BRACKETS - WEIGHING 10 LB 10
INSIDE LENGTH - 24'-4"	END SILL - 7'-12 1/2" CHAN.	DOOR FITTINGS - READING COMP.	BRACE BEAM - 1 1/2" x 1 1/2"
WIDTH - 3'-6 1/2"	BODY BOLSTER - WELDED STEEL	HAND BRAKE - AJAR	STIFFENING - 2 UPPER 2 LOWER - 2 1/2"
HEIGHT - 6'-6 3/8"	SUPPLE STRUCTURE - STEEL	WOOD LIN. & SHIM	LOCKERS - .09" STEEL

* L.B.&N. CARS HAVE ADDITIONAL UPPER & LOWER BERTHS - NO BENCH

READING COMPANY
OFFICE SUPT. M.P. & R.R.
READING, PA. OCT. 2, 1942