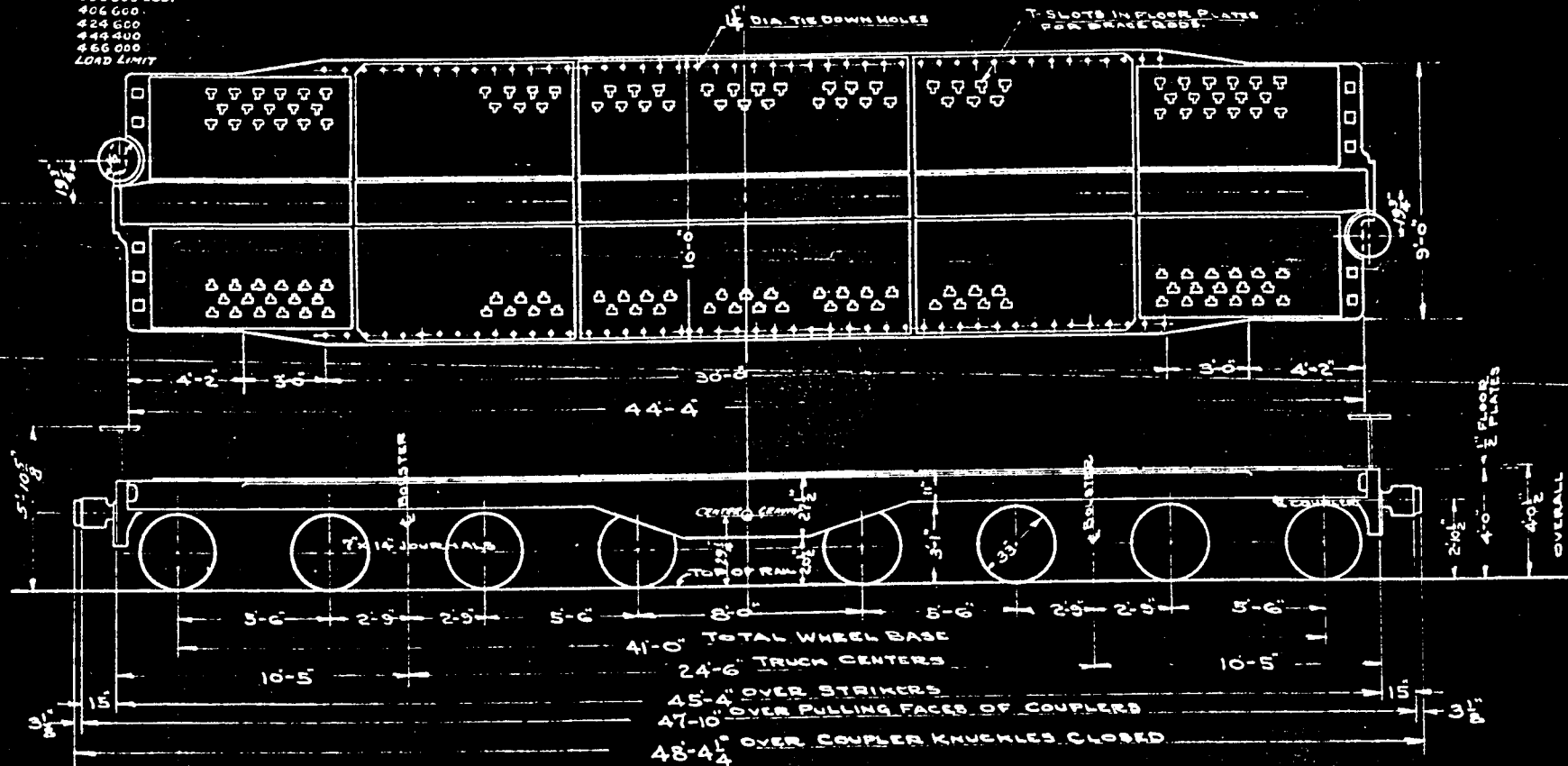


PERMISSIBLE LOADING

LENGTH OF LADING	LOAD
0	390000 LBS.
0.00000	406 600
0.11111	422 600
0.22222	438 600
0.33333	454 600
0.44444	466 000
0.55556	LOAD LIMIT

**FLAT CAR
HIGH CAPACITY
CLASS-FMH SERIES-9100**



C.F.M. (DEL. & M.D. BY 2576)

BUILDER - RDG. CO. - R24	OVERALL HEIGHT - 5'-10"	COUPLERS - E. C. & S. RAID.	FRICITION TRK. SPRS. - 2 1/2" x 1 1/2" x 1/2"	UNION CENTERING DEVICE
BUILT - APRIL 30 1933	UNDERFRAME - CAST STEEL	HANDBRAKE - UNIVERSAL MUSHKAMP	MIN. RADIUS CURVE - 210 FT.	
LT. WEIGHT - EST. 107,000 LBS.	CENTER SILL - "	TRUCK SIDE FRAME - BUSHBY - C. S.	WHEELS - A.A.R. C-33 MULTI-WEAR	
CAPACITY - 490,000	SIDE SILLS - "	TRUCK BOLSTER - BUSHBY - C. S.	ALUM. BOLSTER - WEST C-26-C	
LOAD LIMIT - 490,000	END SILLS - "	JOURNALS - 7" x 12"	UNCOUPLING DEVICE - STAPLES	
LENGTH OF FLOOR - 44'-4"	BODY BOLSTER - "	AIR BRAKES - WAB-2-AB	BRAKE CYL. - 2-VANT 12" x 10"	
WIDTH OF FLOOR - 10'-0"	DRAFT GEAR - WEST NV-11-F	BRAKE BEAMS - POSITIVE - B	PISTON TRAVEL - 5"	

ACTUAL WEIGHT - 106,600 - 4,300
WT. OF ONE TRUCK - 19,040
GRADE OF GRAVITY - 2 1/4% G.S.C. COMB
S. & W. S. S. 11/11/33

READING COMPANY
OFFICE - SUPT. M.P. & R.E.
READING, PA. JUNE 26, 1932