

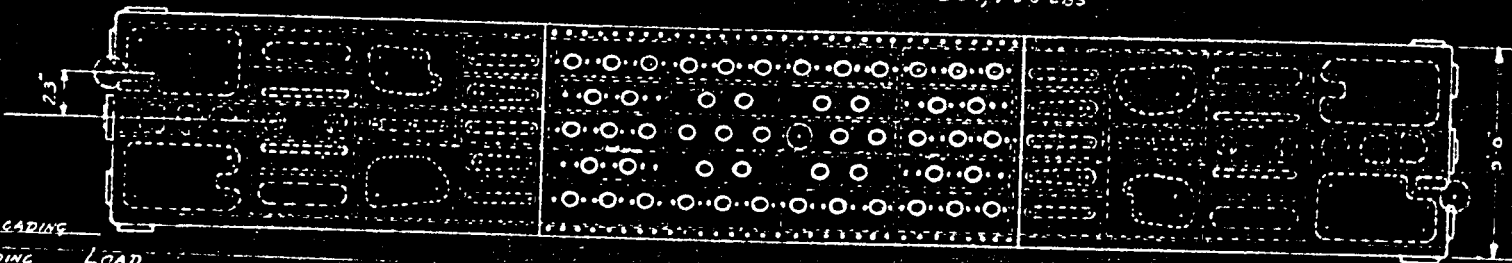
**IMPORTANT**-NO HOLES OTHER THAN THOSE NOW IN THIS CAR MUST BE DRILLED IN THE UNDERFRAME WITHOUT CONSULTING THE ENGINEERING DEPARTMENT, AND UNDER NO CIRCUMSTANCES MUST ANY HOLES BE BURNT IN THIS FRAME.

DEPRESSED CENTER STEEL WELL CAR  
CLASS FWE NO. 99050

1953

LIGHT WEIGHT -  
CAPACITY -  
WEIGHT OF ONE TRUCK -  
L.D. LIMIT

124,800 LBS. 3-17-53  
250,000 LBS.  
251,700 LBS



PERMISSIBLE LOADING

| LENGTH OF LADING | LOAD         |
|------------------|--------------|
| 0'-0"            | 230,000 LBS. |
| 2'-0"            | 230,600      |
| 4'-0"            | 231,600      |
| 6'-0"            | 233,000      |
| 8'-0"            | 234,600      |
| 10'-0"           | 236,000      |
| 12'-0"           | 237,100      |
| 14'-0"           | 242,300      |
| 16'-0"           | 246,000      |
| 18'-0"           | 246 LIMIT    |

