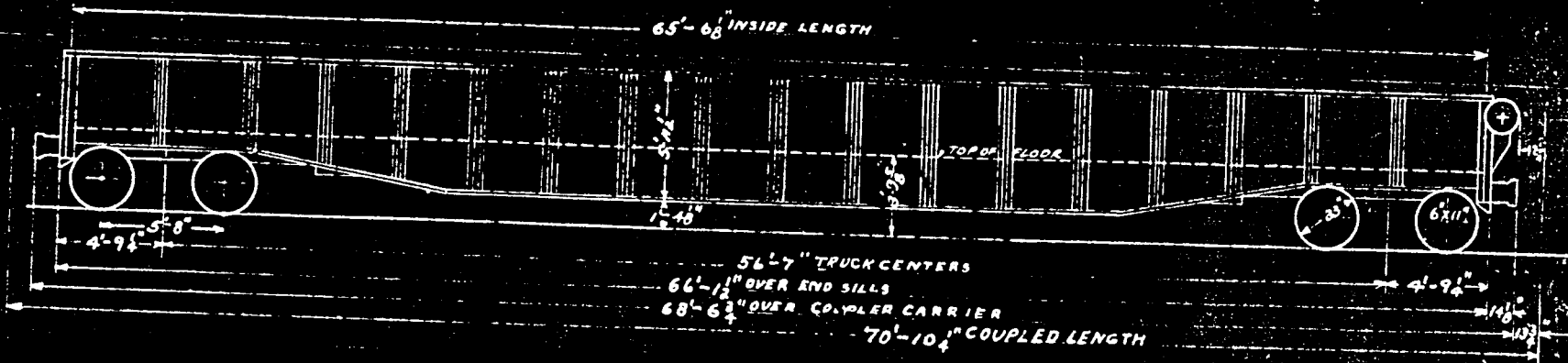
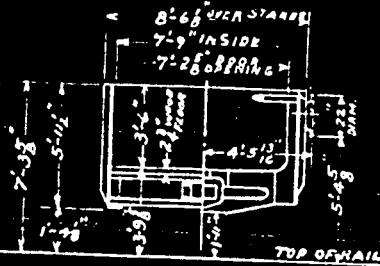


DROP END GONDOLA
CLASS GHG. SERIES 30200 TO 30399.



BUILDER - READING CO.	UNDER FRAME - WELDED STEEL	ROOF - NONE	TRUCK SIDE FRAME - CAST STEEL
BUILT - 1937 AT READING	CENTER SILL - 10' - 25 1/2" L	CAR LINES - NONE	BOLSTER - "
WEIGHT - 6,330 C/BLK MT 186,700	SIDE SILL - 4" x 6" L x 2 L	DRAWGEAR - DURYEA GUSKIN	JOURNALS - C 4" x 11"
CAP'D 19,000 LB. - 1777 CU FT.	INTERM SILL - NONE	COUPLER - TYPE E BOTT OPER TD	BRAKES - WEST. A. 3 - 10 - 10
INSIDE LENGTH - 65' GA	END SILL - PRESSED STEEL	DOOR FIXTURES - U.S. R.A. 570	FRAME BEAM - NO. 3
WIDTH - 7'-5"	BODY BOLSTER - WELDED STEEL	HAND BRAKE - AJAX	FRICTION TRUCK BRAKE - CARD. WEST.
HEIGHT - 3'-6"	SUPER STRUCTURE - STEEL	RUNNING BOARD - NONE	MIN. RAD. CURVE - 150'

190-CARS EQUIPPED WITH
BIEDSBERG SIDE FRAMES
& BOLL PARS WITH 14" CENTERS
10-CARS EQUIPPED WITH
ANDREWS TYPE SIDE FRAMES
& BOLSTERS WITH 12"
CENTER SPACE AS LISTED
30385, 30386, 30388, 30389
30391 TO 30396.

READING COMPANY
THE CENTRAL RR. OF NEW JERSEY
OFFICE SUPT. M. B. STUBBS
READING PA. FEB. 12, 1937