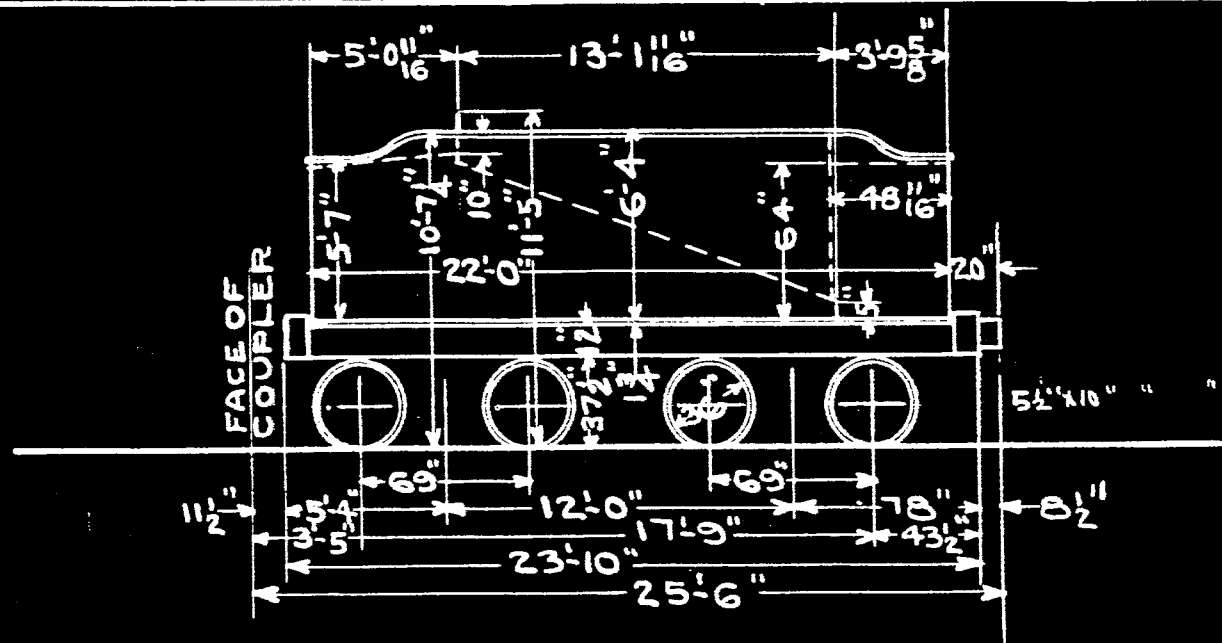


T. E. F. S.  
C. G. A. A.

5,000 GAL.  
STD. 34 BACK

I 2 - ef



WATER CAPACITY-GALLONS	5,000		
COAL " - TONS	10		
TOTAL WEIGHT EMPTY	61,000*		
" " LOADED	132,000		
WEIGHT FRONT TRUCK LOADED	66,000		
" REAR " "	66,000		
" FRONT " EMPTY	30,500		
" REAR " "	30,500		