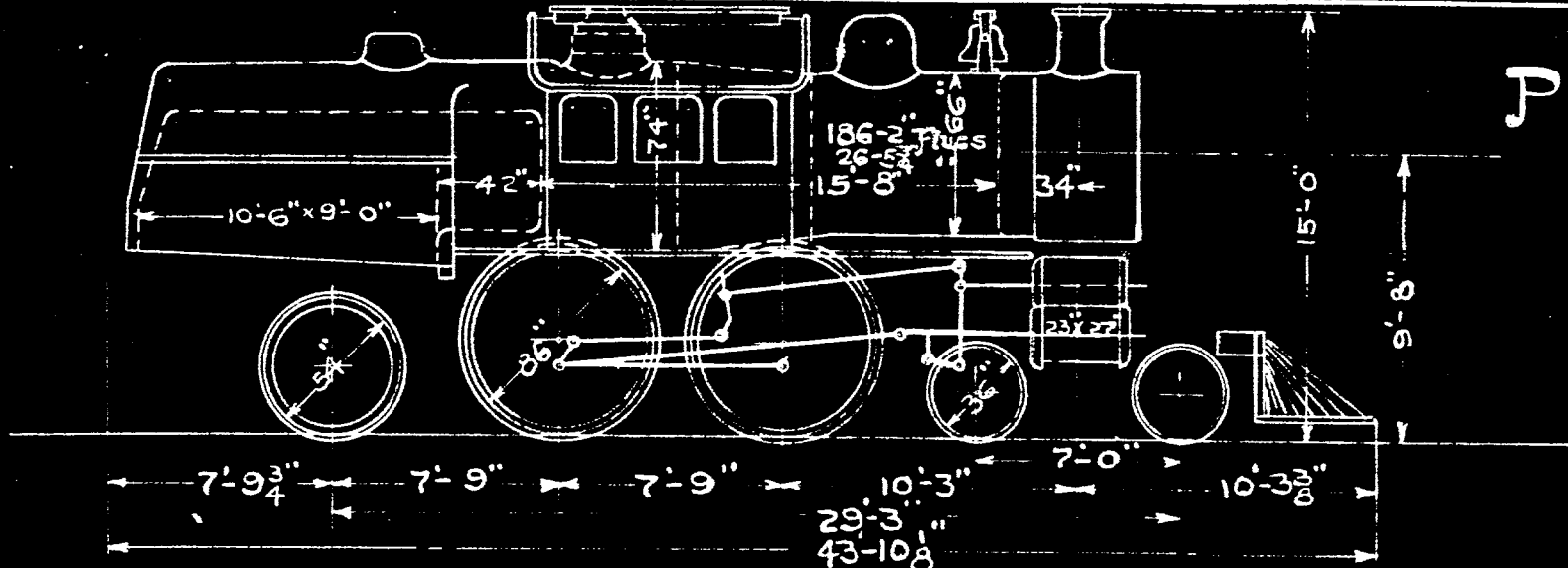


P 5<sub>3</sub>e



Boiler Pressure	215
Tractive Power	30350
Weight on Drivers	134500
"    "    Trucks	41175
"    "    Trailer	44825
"    "    Total	220500
Heating Surface in Fire Box	274
"    "    "    Tubes	3041
"    "    "    Total	3315
Grate	94.5

158-2 Tubes 274  
 26-5 " 2707  
 Total 2981