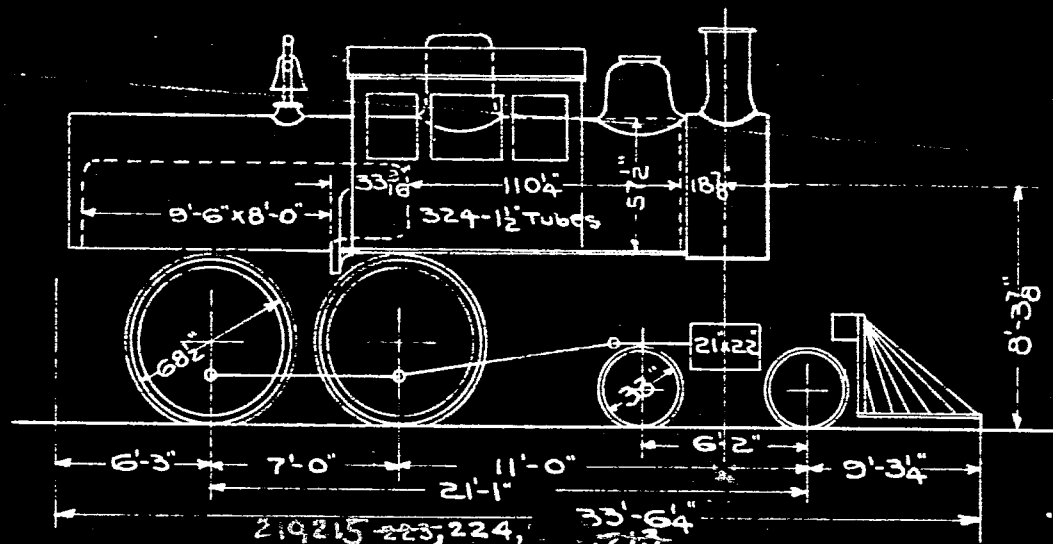


D5-c



	21x22 CYL	20x22 CYL
Boiler Pressure	160	160
Tractive Power	19262	17471
Weight on Drivers	82750	82750
" Total	120650	120650
Heating Surface in Firebox	162	162
" " Tubes	1158	1158
" Total	1320	1320
Grate Surface	76	76

219215-223,224,
213
33'-6 1/4"
213
205-1 3/4"
Tubes 162
861
1023